

CERTIFICATE OF LOCATION OF GOVERNMENT CORNER

County of Anoka

State of Minnesota

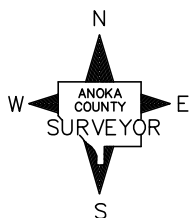
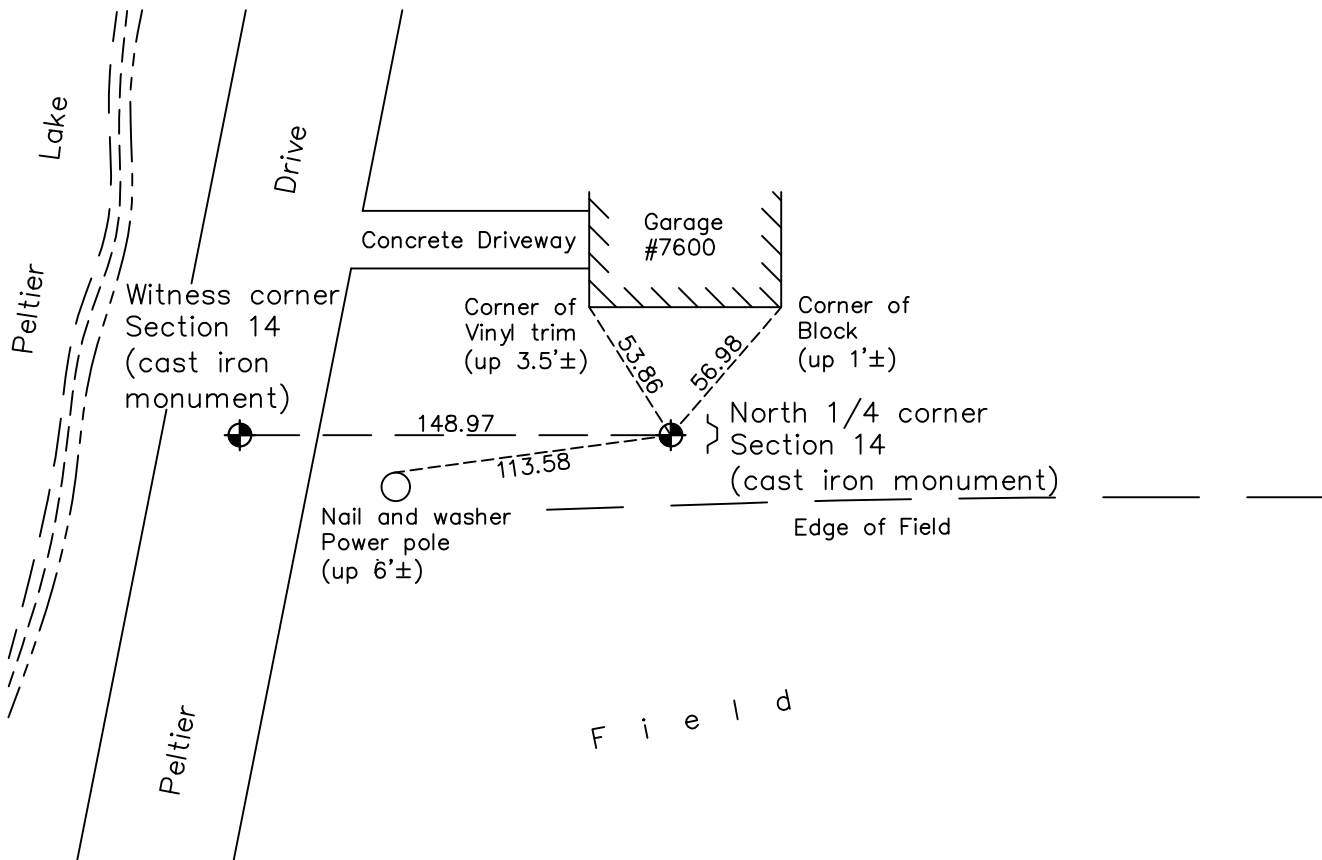
North 1/4 Corner of Sec. 14 Township 31 Range 22

On the 13th day of January, 1964, the described corner was evidenced by a 4"X4" concrete monument

and to perpetuate the location of said corner, at the exact location thereof, a permanent marker was placed consisting of a cast iron monument set on top of the concrete monument with a sign and post set on the east side

AND on the 11th day of May, 2021, said permanent marker was found down 0.5'± and the ties were updated

Updated reference ties are as shown below.



Revision Date
 7/27/21

N.A.D. 1983 Coordinates
 (1996 Adjustment)

County Project Coordinates	
Northing	153601.2444
Easting	555587.3638
Date	2/23/98

I hereby certify that this United States public land survey monument record is correct and complete to the best of my knowledge and belief.
David M. Zieglmeier Date 8/30/21
 David M. Zieglmeier, Anoka County Surveyor
 Minnesota License Number 46179

HISTORY OF GOVERNMENT CORNER

County of Anoka

State of Minnesota

North 1/4 Corner of Sec. 14 Township 31 Range 22

CORNER HISTORY:

Unknown date – F.R. Kvidera found Concrete Monument at surface.

January 13, 1964 – Found 4" Square Concrete Monument up 0.2'± with 1/2" Iron Pipe up 1.5'± on west side and updated ties.

July 9, 1965 – Found Concrete Monument and updated ties.

August 4, 1969 – Found Concrete Monument with steel sign post on east side up 3'± and updated ties.

July 2, 1973 – Replaced Concrete Monument with Cast Iron Monument. Steel sign post on east side up 3'± and updated ties.

August 16, 1976 – Found Cast Iron Monument and updated ties.

July 29, 1980 – Found Cast Iron Monument and updated ties.

May 26, 1983 – Found Cast Iron Monument and updated ties.

July 22, 1986 – Found Cast Iron Monument and updated ties.

November 7, 1991 – Replaced Cast Iron Monument. Sign and post on the east side. Updated ties.

June 10, 1992 – Found Cast Iron Monument and updated ties.

June 18, 1996 – Found Cast Iron Monument and updated ties.

February 23, 1998 – Found Cast Iron Monument with sign and post on the east side. Established NAD 1983 (1996 Adjustment) Anoka County Project Coordinates by Static GPS methods. Updated ties.

July 7, 2010 – Found Cast Iron Monument down 0.5'± with a sign and post on the east side. Updated ties

September 27, 2016 – Found Cast Iron Monument down 0.5'± with a sign and post on the east side. Verified location of corner by VRS GPS methods. Updated ties.

May 11, 2021 – Found Cast Iron Monument down 0.5'± with a sign and post on the east side. Verified location of corner by VRS GPS methods. Updated ties.