

CERTIFICATE OF LOCATION OF GOVERNMENT CORNER

County of Anoka

State of Minnesota

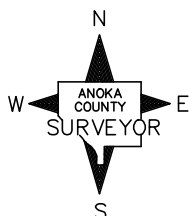
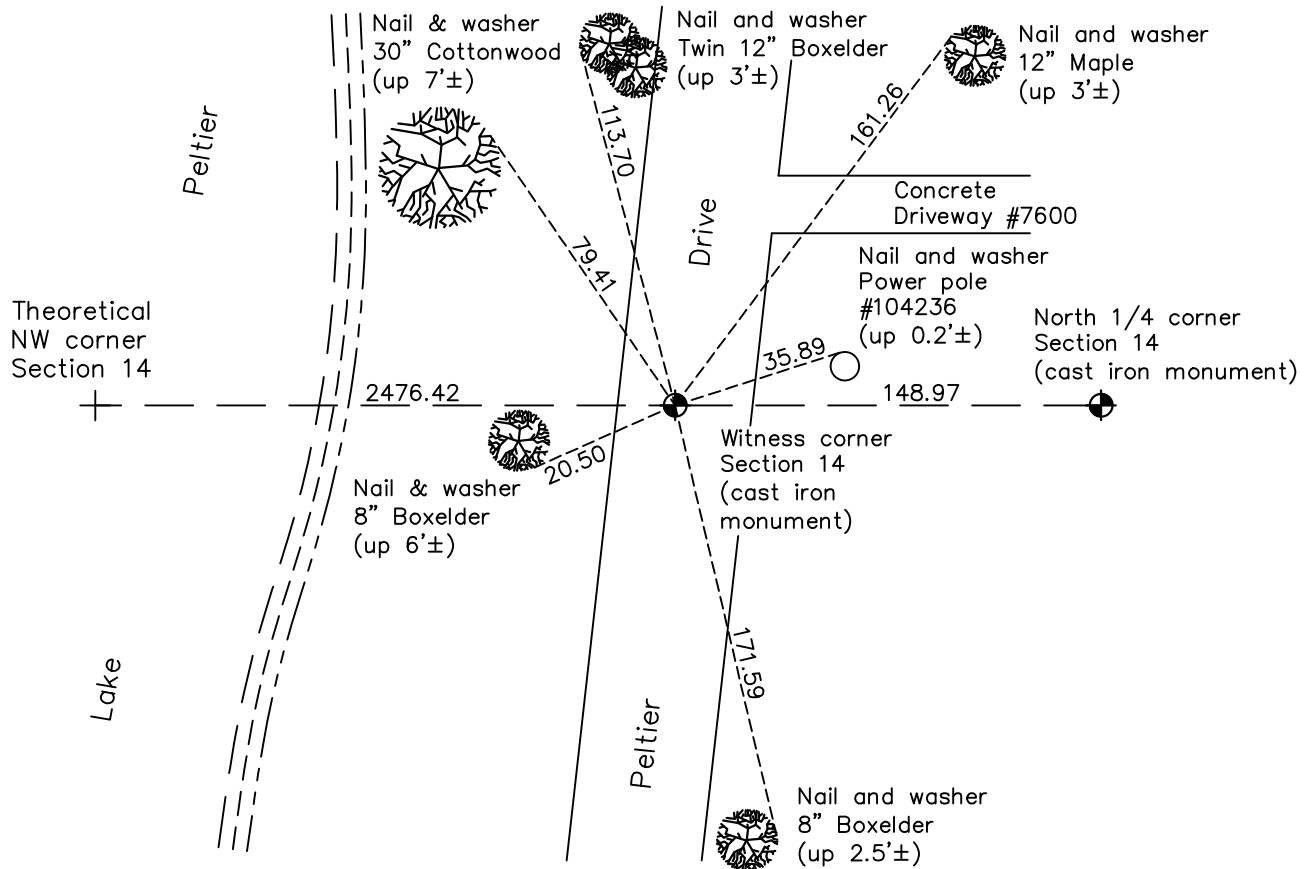
Witness Corner of Sec. 14 Township 31 Range 22
(on north line of section)

On the 25th day of March, 1964, the described corner was evidenced by area resurvey

and to perpetuate the location of said corner, at the exact location thereof, a permanent marker was placed consisting of a cast iron monument

AND on the 10th day of May, 2021, said permanent marker was found flush to the
surface. Ties were updated

Updated reference ties are as shown below.



Revision Date
7/27/21

N.A.D. 1983 Coordinates
(1996 Adjustment)

County Project Coordinates	
Northing	<u>153600.8600</u>
Easting	<u>555438.4575</u>
Date	<u>4/14/98</u>

I hereby certify that this United States public land survey monument record is correct and complete to the best of my knowledge and belief.

David M. Zieglmeier Date 8/30/21

David M. Zieglmeier, Anoka County Surveyor
 Minnesota License Number 46179

HISTORY OF GOVERNMENT CORNER

Page No. 47

County of Anoka

State of Minnesota

Witness Corner of Sec. 14 Township 31 Range 22
(on north line of section)

CORNER HISTORY:

March 25, 1964 - Set P.K. Nail in approximate centerline of dirt road using area resurvey. Established ties to monument.

July 30, 1964 - Set Cast Iron Monument down 0.3'± and updated ties.

July 9, 1965 - Found Cast Iron Monument and updated ties.

August 4, 1969 - Found Cast Iron Monument and updated ties.

July 2, 1973 - Found Cast Iron Monument and updated ties.

August 18, 1976 - Found Cast Iron Monument and updated ties.

February 29, 1980 - Found Cast Iron Monument and updated ties.

July 22, 1986 - Found Cast Iron Monument and updated ties.

August 30, 1991 - Found Cast Iron Monument and updated ties.

June 18, 1996 - Found Cast Iron Monument and updated ties.

April 14, 1998 - Found Cast Iron Monument and established NAD 1983 (1996 Adjustment) Anoka County Project Coordinates by Static GPS methods. Updated ties.

July 7, 2010 - Found Cast Iron Monument flush with the surface and updated ties.

September 26, 2016 - Raised Cast Iron Monument to flush with the surface. Verified location of corner by VRS GPS methods. Updated ties.

May 21, 2020 - Found cast iron monument down and raised flush with the surface.

May 10, 2021 - Found Cast Iron Monument flush with the surface. Verified location of corner by VRS GPS methods. Updated ties.