

CERTIFICATE OF LOCATION OF GOVERNMENT CORNER

County of Anoka

State of Minnesota

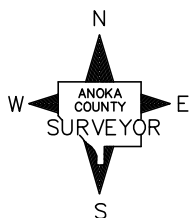
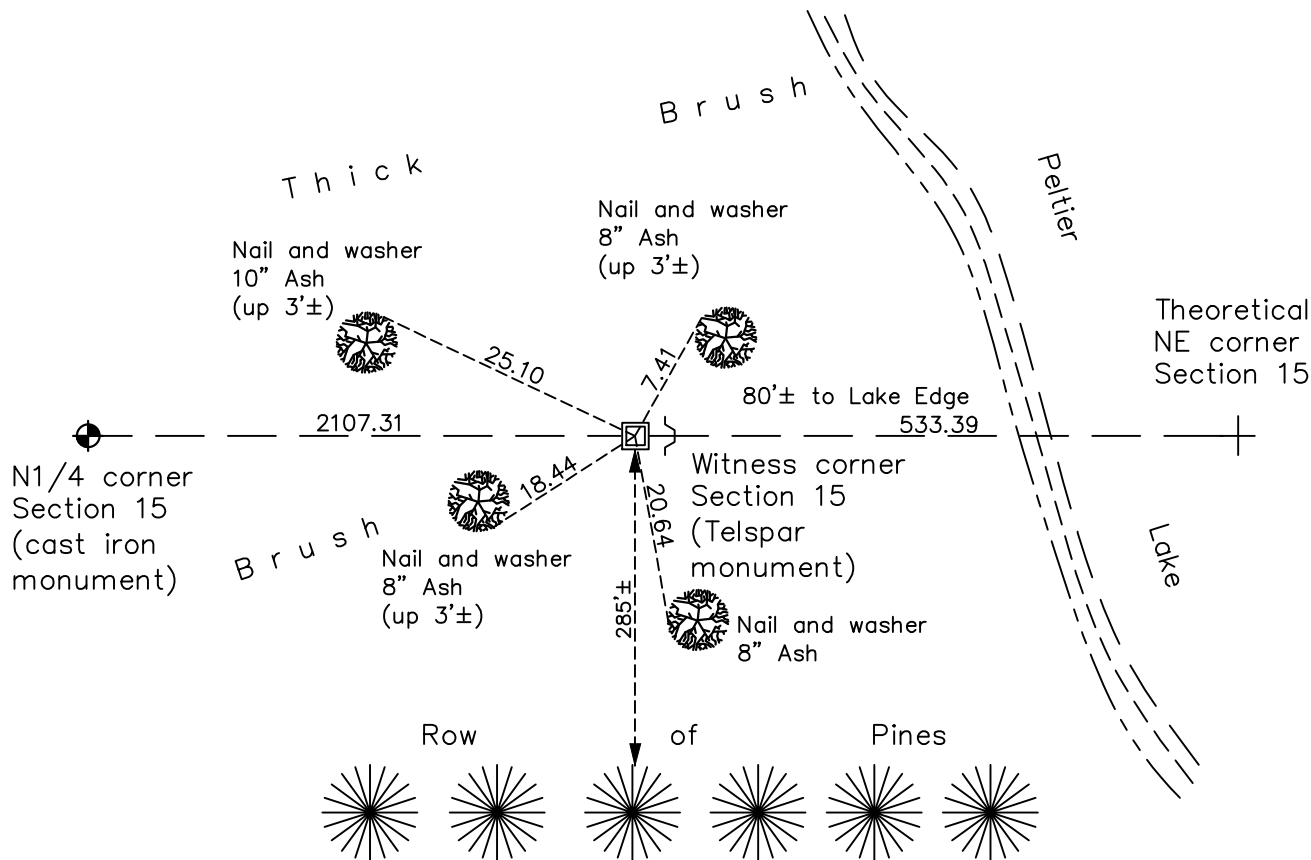
Witness Corner of Sec. 15 Township 31 Range 22
(on north line of section)

On the 25th day of March, 1964, the described corner was evidenced by area resurvey

and to perpetuate the location of said corner, at the exact location thereof, a permanent marker was placed consisting of a 2" square steel Telespar monument set up 1'± with a 'County Surveyor' cap punched and a sign and post on the east side

AND on the 17th day of May, 2021, said permanent marker was found with a sign and post on the east side and the ties were updated

Updated reference ties are as shown below.



Revision Date
7/27/21

N.A.D. 1983 Coordinates
(1996 Adjustment)

County Project Coordinates	
Northing	153596.0415
Easting	552428.9417
Date	2/06/98

I hereby certify that this United States public land survey monument record is correct and complete to the best of my knowledge and belief.
David M Zieglmeier Date 8/30/21
 David M. Zieglmeier, Anoka County Surveyor
 Minnesota License Number 46179

HISTORY OF GOVERNMENT CORNER

Page No. 48

County of Anoka

State of Minnesota

Witness Corner of Sec. 15 Township 31 Range 22
(on north line of section)

CORNER HISTORY:

March 25, 1964 – Set Spike using area resurvey and established ties to monument.

July 30, 1964 – Set 1” Red and White Iron Pipe up 3.5’± and updated ties.

July 18, 1973 – Found Red and White Iron Pipe and updated ties.

May 18, 1977 – Found Red and White Iron Pipe and updated ties.

July 18, 1986 – Found Red and White Iron Pipe and updated ties.

June 19, 1996 – Found Red and White Iron Pipe and updated ties.

February 6, 1998 – Found Red and White Iron Pipe set in concrete and established NAD 1983 (1996 Adjustment) Anoka County Project Coordinates by Static GPS methods. Updated ties.

September 1, 2010 – Found Red and White Iron Pipe up 3’± and loose. Updated ties.

March 11, 2011 – Found Red and White Iron Pipe and verified location of corner by Static GPS methods.

March 29, 2011 – Replaced Red and White Iron Pipe with a 2” square steel Telespar Monument up 1’± with a ‘County Surveyor’ cap punched and sign and post on the east side. Updated ties and verified location of corner by VRS GPS methods.

January 31, 2017 – Found 2” square steel Telespar Monument up 1’± with a ‘County Surveyor’ cap punched and sign and post on the east side. Updated ties.

May 17, 2021 – Found 2” square steel Telespar Monument up 1’± with a ‘County Surveyor’ cap punched and sign and post on the east side. Verified location of corner by VRS GPS methods. Updated ties.