

# CERTIFICATE OF LOCATION OF GOVERNMENT CORNER

County of Anoka

State of Minnesota

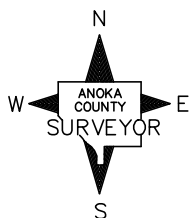
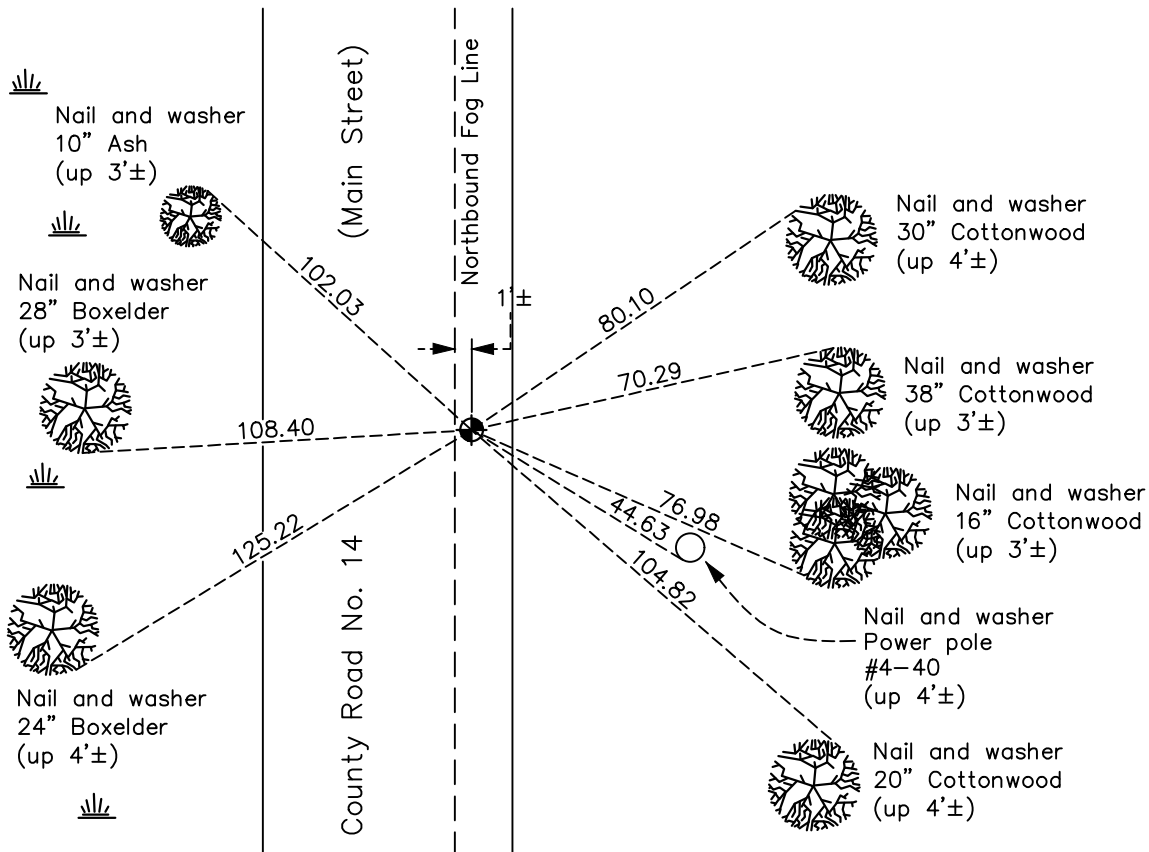
## South 1/4 Corner of Sec. 10 Township 31 Range 22

On the 13th day of May, 1963, the described corner was evidenced by a 3/4" iron pipe

and to perpetuate the location of said corner, at the exact location thereof, a permanent marker was placed consisting of a cast iron monument

AND on the 13th day of May, 2021, said permanent marker was found flush and the ties were updated. Monument is 1'± East of northbound fog line.

Updated reference ties are as shown below.



N.A.D. 1983 Coordinates  
(1996 Adjustment)

County Project Coordinates	
Northing	<u>153592.8339</u>
Easting	<u>550322.3013</u>
Date	<u>2/06/98</u>

Revision Date  
7/27/21

I hereby certify that this United States public land survey monument record is correct and complete to the best of my knowledge and belief.  
*David M Zieglsmeier* Date 8/30/21  
David M. Zieglsmeier, Anoka County Surveyor  
 Minnesota License Number 46179

# HISTORY OF GOVERNMENT CORNER

Page No. 49

County of Anoka

State of Minnesota

## South 1/4 Corner of Sec. 10 Township 31 Range 22

### **CORNER HISTORY:**

September 22, 1943 – Cartwright found Concrete Monument. Established ties to monument.

May 13, 1963 – Found 3/4" Iron Pipe and bolt down 1/2". Concrete Monument was not found. Set Cast Iron Monument flush with the surface and updated ties.

June 16, 1965 – Found Cast Iron Monument and set P.K. nails 2.00' north and east. Updated ties.

August 6, 1969 – Found Cast Iron Monument and updated ties.

July 18, 1973 – Found Cast Iron Monument and updated ties.

October 15, 1975 – Raised Cast Iron Monument and updated ties.

August 18, 1976 – Found Cast Iron Monument and updated ties.

August 27, 1984 – Raised Cast Iron Monument and updated ties.

July 3, 1986 – Found Cast Iron Monument and updated ties.

June 28, 1991 – Found Cast Iron Monument and updated ties.

June 14, 1996 – Found Cast Iron Monument and updated ties. Set P.K. nails 2.00' east and west of monument.

February 6, 1998 – Found Cast Iron Monument and established NAD 1983 (1996 Adjustment) Anoka County Project Coordinates by Static GPS methods. Updated ties.

July 14, 2010 – Set construction ties and removed Cast Iron Monument prior to road construction.

August 16, 2010 – Reset Cast Iron Monument after road construction. Monument is 1'± East of northbound fog line. Verified location of corner by Static GPS methods and updated ties.

January 10, 2017 – Found Cast Iron Monument and updated ties. Verified location of corner by VRS GPS methods.

May 13, 2021 – Found Cast Iron Monument flush and updated ties. Verified location of corner by VRS GPS methods.