

# CERTIFICATE OF LOCATION OF GOVERNMENT CORNER

County of Anoka

State of Minnesota

## Northeast Corner of Sec. 16 Township 31 Range 22

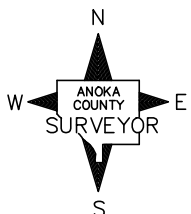
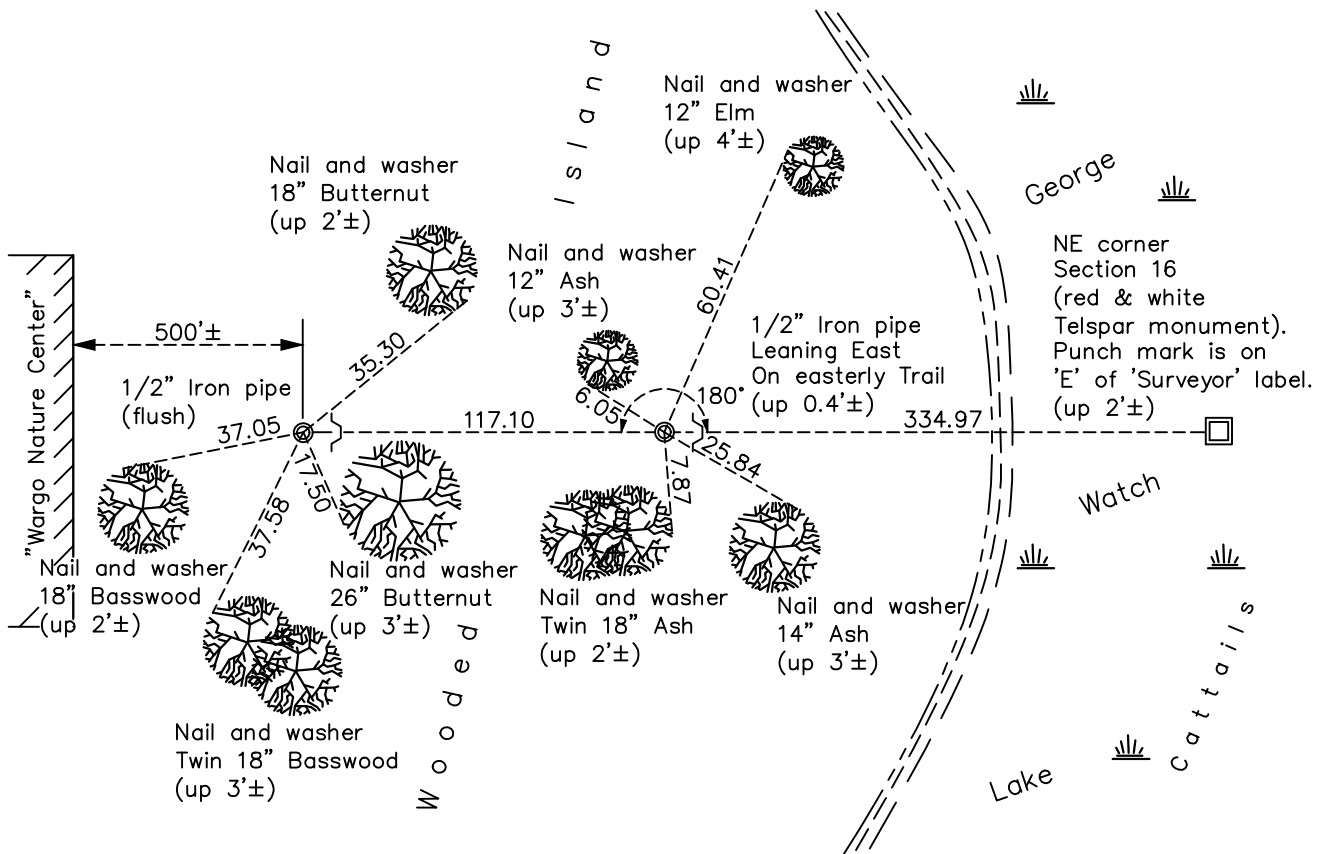
On the 2nd day of March, 1964, the described corner was evidenced by a 2" iron pipe

and to perpetuate the location of said corner, at the exact location thereof, a permanent marker was placed consisting of a red and white 2" square steel Telespar monument with 'County

Surveyor' cap punched with 1/2" iron pipes and signs and posts as reference ties to the West

AND on the 7th day of May, 2021, said permanent marker was found. Both iron pipes and Telespar monument were found and the ties were updated.

Updated reference ties are as shown below.



Revision Date

7/27/21

N.A.D. 1983 Coordinates  
(1996 Adjustment)

County Project Coordinates	
Northing	<u>153579.4150</u>
Easting	<u>547687.9660</u>
Date	<u>2/09/98</u>

I hereby certify that this United States public land survey monument record is correct and complete to the best of my knowledge and belief.

*David M Zieglmeier* Date 8/30/21

David Zieglmeier Anoka County Surveyor  
Minnesota License Number 46179

# HISTORY OF GOVERNMENT CORNER

Page No. 50

County of Anoka

State of Minnesota

## Northeast Corner of Sec. 16 Township 31 Range 22

### **CORNER HISTORY:**

March 2, 1964 – Found 2” Iron Pipe down 1.5’± believed to be set by Wayne Ridge on Jan 8, 1914 for a survey of Government Lot 16– Sec 16–31–22. Replaced with 1” X 10’ red and white Iron Pipe up 3’±. Established ties to monument.

January 15, 1974 – Found Iron Pipe missing.

August 1, 1979 – Replaced found red and white Iron Pipe with a new red and white Iron Pipe and updated ties.

January 22, 1990 – Found red and white Iron Pipe and set two 1/2” Iron Pipes with signs and posts on the west side of red and white Iron Pipe. Updated ties.

September 9, 1991 – Found red and white Iron Pipe and updated ties.

February 9, 1998 – Found red and white Iron Pipe and established NAD 1983 (1996 Adjustment) Anoka County Project Coordinates by Static GPS methods. Updated ties.

September 13, 2010 – Found red and white Iron Pipe rusted off at water line. Straightened up iron pipe and updated ties.

March 16, 2011 – Replaced red and white Iron Pipe with a red and white 2” square steel Telespar Monument with ‘County Surveyor’ cap punched. Found Iron Pipes with signs and posts as reference ties to the west. Verified location of Telespar monument by VRS GPS methods. Updated ties.

January 23, 2017 – Found red and white 2” square steel Telespar Monument with ‘County Surveyor’ cap punched and 1/2” iron pipes with signs and posts west of monument. Updated ties.

May 7, 2021 – Found red and white 2” square steel Telespar Monument with ‘County Surveyor’ cap punched and 1/2” iron pipes with signs and posts west of monument. Verified location of Telespar monument by VRS GPS methods. Updated ties.