

# CERTIFICATE OF LOCATION OF GOVERNMENT CORNER

County of Anoka

State of Minnesota

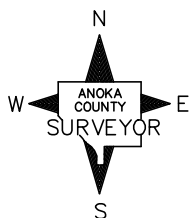
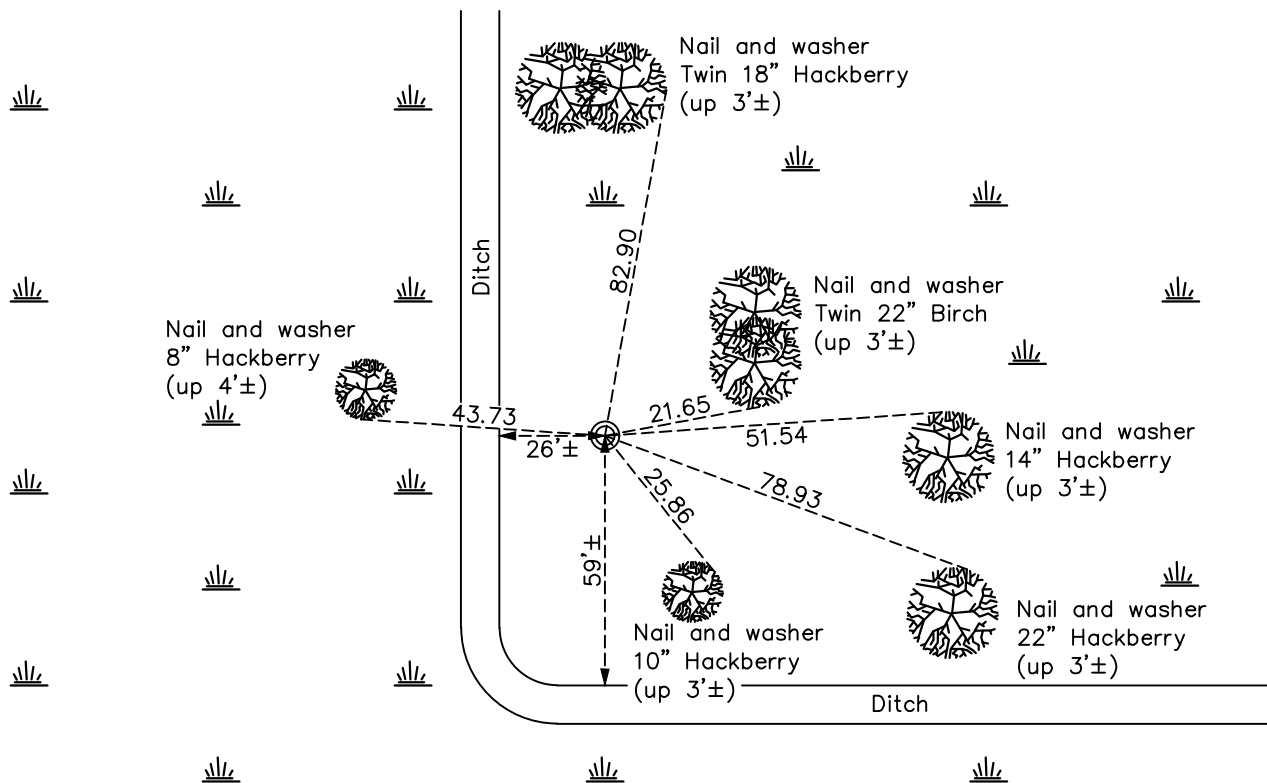
## Northeast Corner of Sec. 17 Township 31 Range 22

On the 7th day of July, 1975, the described corner was evidenced by area resurvey

and to perpetuate the location of said corner, at the exact location thereof, a permanent marker was placed consisting of a red and white iron pipe located 500'± south of freeway

AND on the 31th day of January, 2017, said permanent marker was found up 4'± with a sign facing South and the ties were updated. Sign is broken and iron pipe partially rusted.

Updated reference ties are as shown below.



Revision Date  
5/10/17

N.A.D. 1983 Coordinates  
(1996 Adjustment)

County Project Coordinates	
Northing	<u>153570.6763</u>
Easting	<u>542433.8797</u>
Date	<u>2/09/98</u>

I hereby certify that this United States public land survey monument record is correct and complete to the best of my knowledge and belief.

*David M Zieglsmeier* Date 8/30/21

David M. Zieglsmeier, Anoka County Surveyor  
Minnesota License Number 46179

# HISTORY OF GOVERNMENT CORNER

Page No. 53

County of Anoka

State of Minnesota

## Northeast Corner of Sec. 17 Township 31 Range 22

### **CORNER HISTORY:**

July 7, 1975 – Set red and white Iron Pipe up 3'± using area resurvey. Established ties to monument. Iron Pipe is 500'± south of freeway.

May 18, 1977 – Found red and white Iron Pipe and updated ties.

December 6, 1996 – Found red and white Iron Pipe and updated ties.

February 9, 1998 – Found red and white Iron Pipe and established NAD 1983 (1996 Adjustment) Anoka County Project Coordinates by Static GPS methods. Updated ties.

August 30, 2010 – Found red and white Iron Pipe up 4'± and a sign facing south and updated ties.

January 31, 2017 – Found red and white Iron Pipe up 4'± partially rusted and a broken sign facing south. Updated ties.