

CERTIFICATE OF LOCATION OF GOVERNMENT CORNER

County of Anoka

State of Minnesota

Witness Corner of Sec. 9 Township 31 Range 22

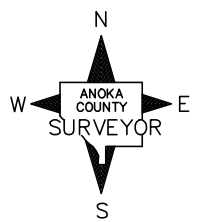
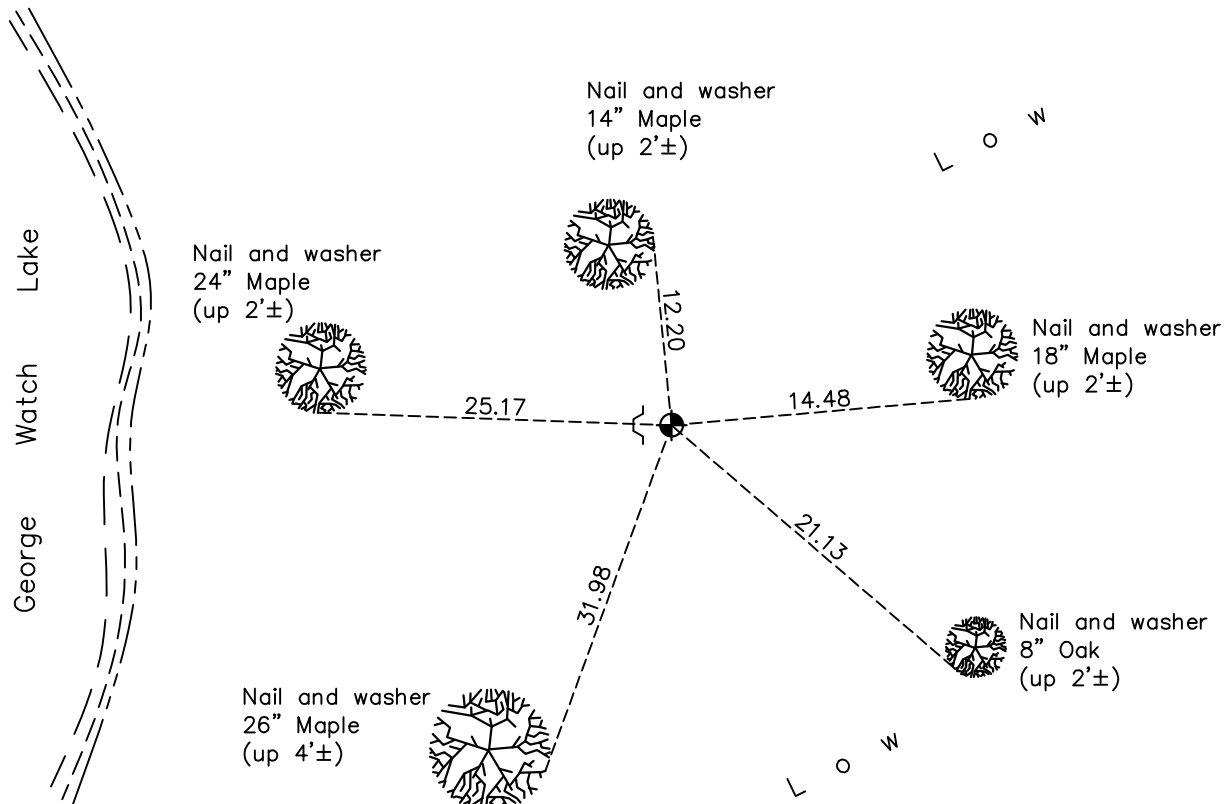
(on south line of section and east side of lake)

On the 19th day of February, 1986, the described corner was evidenced by area resurvey

and to perpetuate the location of said corner, at the exact location thereof, a permanent marker was placed consisting of a cast iron monument with a sign and post on the west side

AND on the 7th day of May, 2021, said permanent marker was found flush to surface and the ties were updated (250'± west of Wargo Nature Center—follow "Deer Trail")

Updated reference ties are as shown below.



Revision Date
7/27/21

N.A.D. 1983 Coordinates
(1996 Adjustment)

County Project Coordinates	
Northing	<u>153577.4344</u>
Easting	<u>546436.9330</u>
Date	<u>2/09/98</u>

I hereby certify that this United States public land survey monument record is correct and complete to the best of my knowledge and belief.

David M Zieglmeier Date 8/30/21

David Zieglmeier Anoka County Surveyor
Minnesota License Number 46179

HISTORY OF GOVERNMENT CORNER

Page No. 53B

County of Anoka

State of Minnesota

Witness Corner of Sec. 9 Township 31 Range 22
(on south line of section and east side of lake)

CORNER HISTORY:

February 19, 1986 – Set 1/2” Iron Pipe using area resurvey and a sign and post on the west side. Established ties to monument.

July 18, 1986 – Found Cast Iron Monument (date set unknown) and updated ties

July 19, 1988– Found Cast Iron Monument and updated ties

October 14, 1991 – Found Cast Iron Monument and updated ties

July 18, 1996 – Found Cast Iron Monument and updated ties

February 9, 1998 – Found Cast Iron Monument with sign and post on the west side. Established NAD 1983 (1996 Adjustment) Anoka County Project Coordinates by Static GPS methods. Updated ties.

September 10, 2010 – Found Cast Iron Monument flush with the surface 250'± west of Wargo Nature Center– follow "Deer Trail". Updated ties

January 19, 2017 – Found Cast Iron Monument down 0.2'± with sign and post on the west side. Updated ties

May 7, 2021 – Found Cast Iron Monument flush to surface with sign and post on the west side. Updated ties