

CERTIFICATE OF LOCATION OF GOVERNMENT CORNER

County of Anoka

State of Minnesota

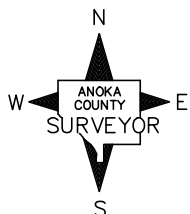
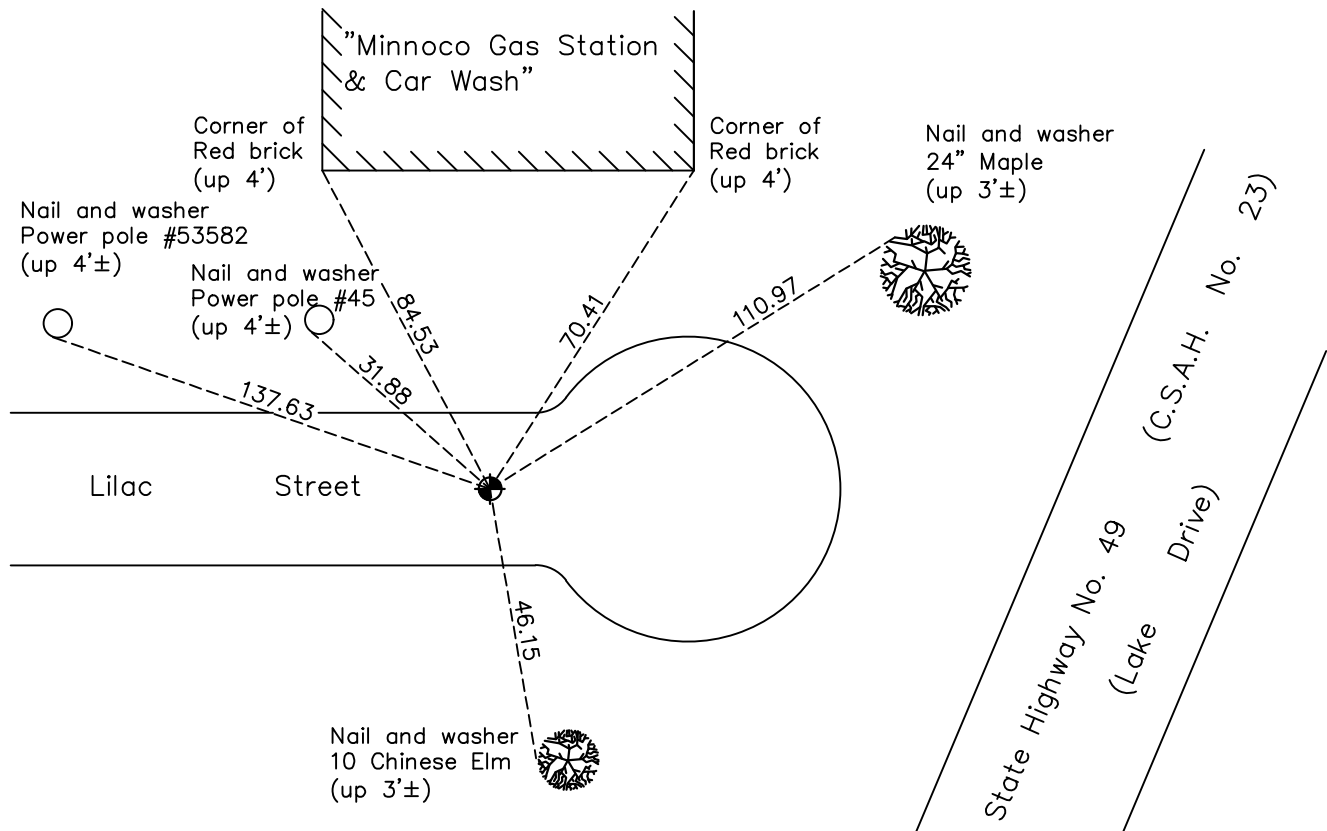
North 1/4 Corner of Sec. 17 Township 31 Range 22

On the 5th day of May, 1963, the described corner was evidenced by a concrete monument

and to perpetuate the location of said corner, at the exact location thereof, a permanent marker was placed consisting of a cast iron monument

AND on the 23rd day of April, 2021, said permanent marker was found with top missing and flush with the surface. Placed new top on monument. Ties were updated

Updated reference ties are as shown below.



Revision Date

7/27/21

N.A.D. 1983 Coordinates
(1996 Adjustment)

County Project Coordinates	
Northing	<u>153596.3304</u>
Easting	<u>539803.0263</u>
Date	<u>5/01/98</u>

I hereby certify that this United States public land survey monument record is correct and complete to the best of my knowledge and belief.

David M Zieglmeier Date 8/30/21

David Zieglmeier Anoka County Surveyor
Minnesota License Number 46179

HISTORY OF GOVERNMENT CORNER

Page No. 54

County of Anoka

State of Minnesota

North 1/4 Corner of Sec. 17 Township 31 Range 22

CORNER HISTORY:

No DATE – M.S.H.D. found 1" Pinched Pipe. Established ties to monument.

February 28, 1963 – Found 1" Pinched Iron Pipe down 0.3'± and updated ties.

May 5, 1963 – Found 4" square Concrete Monument down 8", 0.3'± south of 3/4" Iron Pipe down 5" (Iron pipe tied as section corner by A.C.H.D.) Set 3/4" Iron Pipe flush over concrete and updated ties.

June 14, 1965 – Found 3/4" Iron Pipe over Concrete Monument and updated ties.

August 15, 1969 – Set Cast Iron Monument flush with the surface over Concrete Monument down 8" with P.K. Nails 2.00' north and east. Updated ties.

June 14, 1973 – Found Cast Iron Monument and updated ties.

May 18, 1977 – Found Cast Iron Monument and updated ties.

August 6, 1980 – Found Cast Iron Monument and updated ties.

August 17, 1995 – Raised Cast Iron Monument to flush with the surface and updated ties.

January 26, 1998 – Found Cast Iron Monument and updated ties.

May 1, 1998 – Found Cast Iron Monument and established NAD 1983 (1996 Adjustment) Anoka County Project Coordinates by Static GPS methods. Updated ties.

June 14, 1999 – Found Cast Iron Monument and updated ties.

July 5, 2000 – Replaced Cast Iron Monument and updated ties.

June 15, 2010 – Found Cast Iron Monument and updated ties.

October 27, 2016 – Found Cast Iron Monument with top missing and flush with the surface. Placed new top on monument and updated ties. Verified location of corner by VRS GPS methods.

April 23, 2021 – Found Cast Iron Monument with top missing and flush with the surface. Placed new top on monument and updated ties. Verified location of corner by VRS GPS methods.