

CERTIFICATE OF LOCATION OF GOVERNMENT CORNER

County of Anoka

State of Minnesota

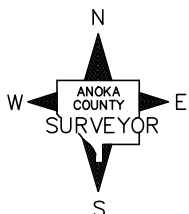
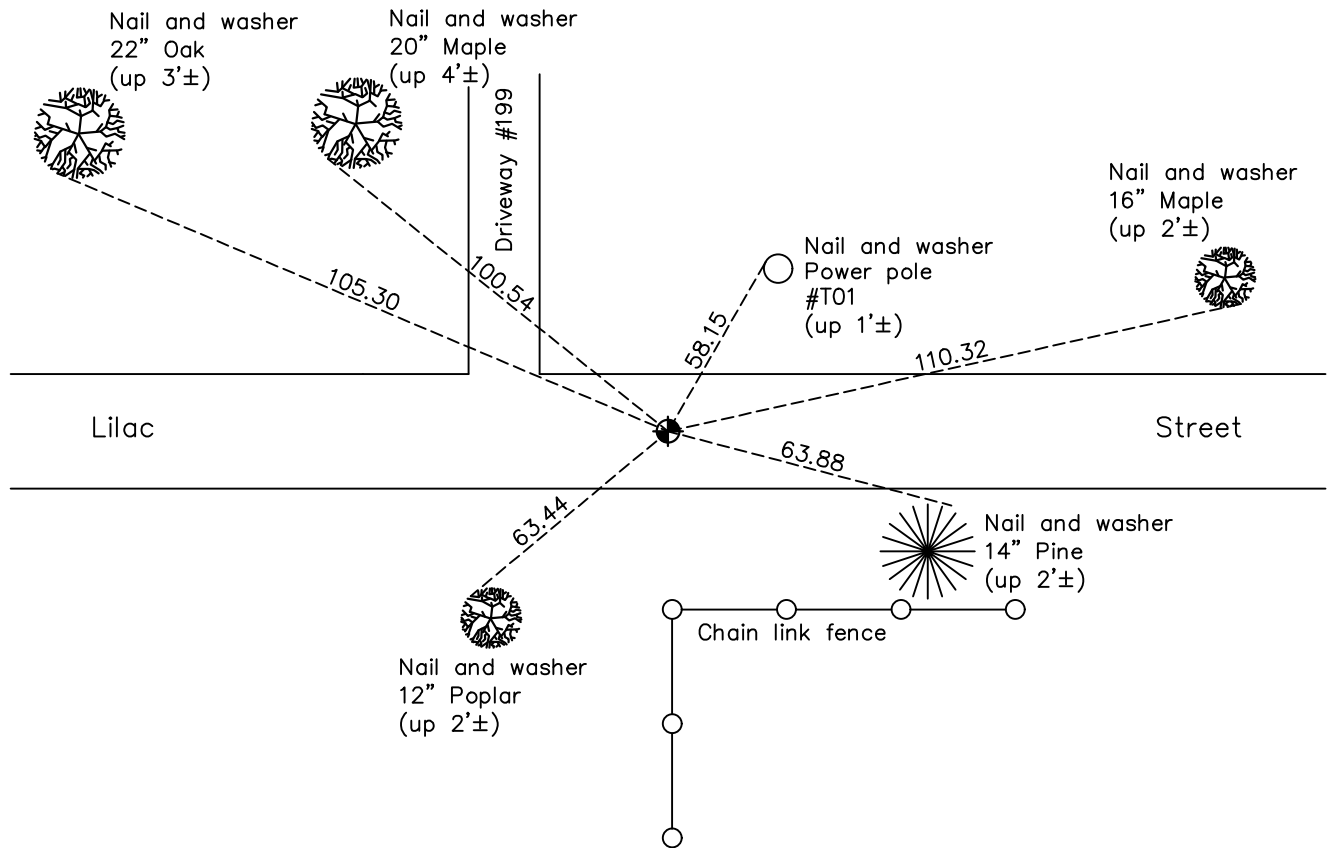
North 1/4 Corner of Sec. 18 Township 31 Range 22

On the 28th day of February, 1963, the described corner was evidenced by an iron pipe

and to perpetuate the location of said corner, at the exact location thereof, a permanent marker was placed consisting of a cast iron monument

AND on the 18th day of May, 2021, said permanent marker was found flush with the surface and the ties were updated

Updated reference ties are as shown below.



Revision Date

7/27/21

N.A.D. 1983 Coordinates
(1996 Adjustment)

County Project Coordinates	
Northing	153535.9976
Easting	534517.3514
Date	1/26/98

I hereby certify that this United States public land survey monument record is correct and complete to the best of my knowledge and belief.

David M Zieglmeier Date 8/30/21

David Zieglmeier Anoka County Surveyor
Minnesota License Number 46179

HISTORY OF GOVERNMENT CORNER

Page No. 56

County of Anoka

State of Minnesota

North 1/4 Corner of Sec. 18 Township 31 Range 22

CORNER HISTORY:

February 24, 1958 – G. Hopkins found 4” Pipe down 1’±. Established ties to monument.

March 16, 1962 – 4” Pipe not found. Set 3/4” Iron Pipe down 0.3’± using Hopkins’ ties . Updated ties.

February 28, 1963 – Found Iron Pipe and updated ties prior to road construction

June 15, 1965 – Set Cast Iron Monument after road construction. Updated ties.

August 14, 1969 – Raised Cast Iron Monument and set P.K. Nails 2.00’ north and east of monument. Updated ties.

June 15, 1973 – Found Cast Iron Monument and updated ties.

May 18, 1977 – Found Cast Iron Monument and updated ties.

July 16, 1986 – Found Cast Iron Monument and updated ties.

August 29, 1991 – Found Cast Iron Monument and updated ties.

June 12, 1996 – Found Cast Iron Monument and updated ties.

January 26, 1998 – Found Cast Iron Monument and established NAD 1983 (1996 Adjustment) Anoka County Project Coordinates by Static GPS methods. Updated ties.

July 10, 2012 – Set construction ties and removed cast iron monument prior to road construction.

August 27, 2012 – Set Cast Iron Monument flush with the surface after road construction using construction ties. Updated ties and verified location of corner by VRS GPS methods.

October 27, 2016 – Found Cast Iron Monument flush with the surface. Updated ties and verified location of corner by VRS GPS methods.

May 18, 2021 – Found Cast Iron Monument flush with the surface. Updated ties and verified location of corner by VRS GPS methods.