

# CERTIFICATE OF LOCATION OF GOVERNMENT CORNER

County of Anoka

State of Minnesota

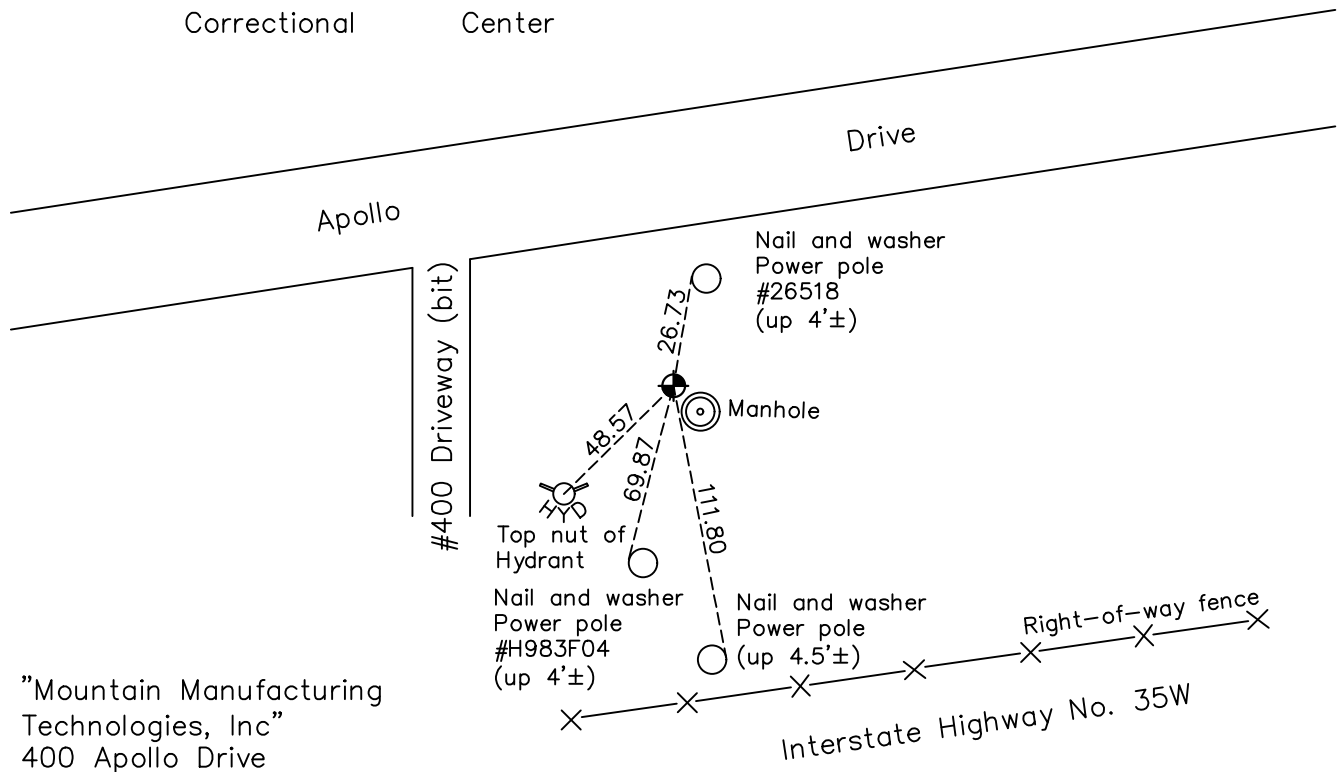
## East 1/4 Corner of Sec. 18 Township 31 Range 22

On the 12th day of April, 1962, the described corner was evidenced by a 3/4" iron pipe

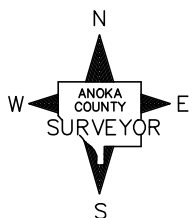
and to perpetuate the location of said corner, at the exact location thereof, a permanent marker was placed consisting of a partial cast iron monument in concrete next to manhole

AND on the 23rd day of April, 2021, said permanent marker was found flush with the surface and 0.5'± NW of manhole edge with "T" post to the east 1'± and the ties were updated

Updated reference ties are as shown below.



"Mountain Manufacturing Technologies, Inc"  
400 Apollo Drive



Revision Date  
**7/27/21**

N.A.D. 1983 Coordinates  
(1996 Adjustment)

County Project Coordinates	
Northing	150965.5732
Easting	537176.3448
Date	1/27/98

I hereby certify that this United States public land survey monument record is correct and complete to the best of my knowledge and belief.

*David M Zieglmeier* Date 8/30/21

David Zieglmeier Anoka County Surveyor  
Minnesota License Number 46179

# HISTORY OF GOVERNMENT CORNER

County of Anoka

State of Minnesota

## East 1/4 Corner of Sec. 18 Township 31 Range 22

### **CORNER HISTORY:**

February 24, 1958 – G. Hopkins Found 1” Pinched Iron Pipe down 0.6'±. Established ties to monument.

April 12, 1962 – Found 3/4” Pinched Iron Pipe down 0.5'± and updated ties.

June 14, 1965 – Found Pinched Iron Pipe and updated ties.

March 17, 1966 – Found 3/4” Pinched Iron Pipe down 0.5'± and set construction ties prior to road construction.

June 19, 1973 – Found Pinched Iron Pipe and updated ties.

May 19, 1977 – Found Pinched Iron Pipe and updated ties.

August 6, 1980 – Found Pinched Iron Pipe and updated ties.

July 26, 1986 – Found Pinched Iron Pipe and updated ties.

October 25, 1989 – Found Pinched Iron Pipe and updated ties.

August 29, 1991 – Found Pinched Iron Pipe and updated ties.

April 14, 1992 – Found Pinched Iron Pipe and updated ties.

June 13, 1996 – Found cast iron cap set in concrete and updated ties.

January 27, 1998 – Reset Partial Cast Iron Monument in concrete next to manhole and established NAD 1983 (1996 Adjustment) Anoka County Project Coordinates by Static GPS methods. Updated ties.

June 14, 2010 – Found Partial Cast Iron Monument flush with the surface in concrete and 0.5'± NW of manhole edge. Updated ties.

November 14, 2016 – Found Partial Cast Iron Monument flush with the surface in concrete and 0.5'± NW of manhole edge with T post 1'± east. Verified location of corner by VRS GPS methods. Updated ties.

April 23, 2021 – Found Partial Cast Iron Monument flush with the surface in concrete and 0.5'± NW of manhole edge with T post 1'± east. Verified location of corner by VRS GPS methods. Updated ties.