

# CERTIFICATE OF LOCATION OF GOVERNMENT CORNER

County of Anoka

State of Minnesota

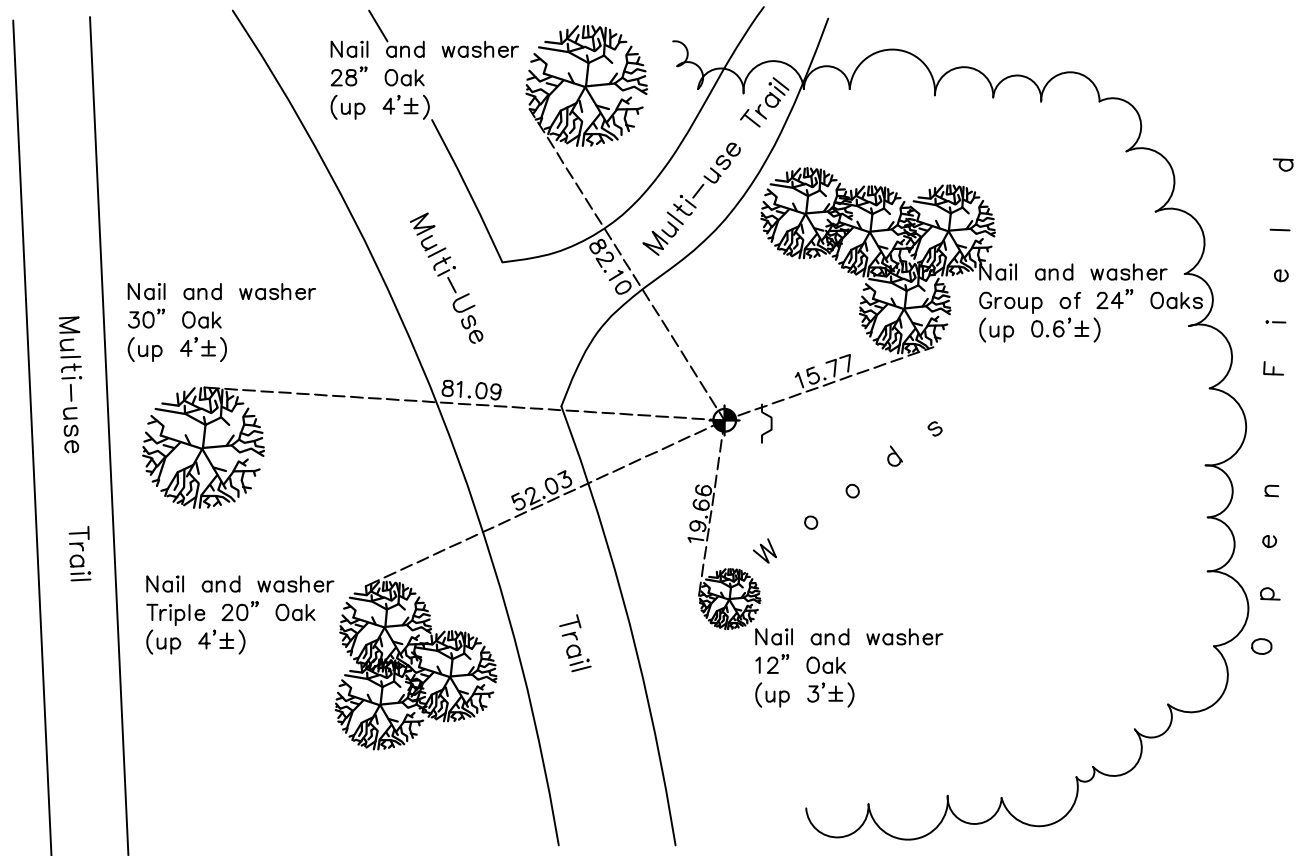
## West 1/4 Corner of Sec. 16 Township 31 Range 22

On the 19th day of March, 1969, the described corner was evidenced by area resurvey

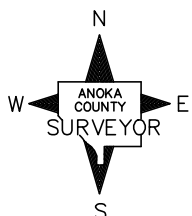
and to perpetuate the location of said corner, at the exact location thereof, a permanent marker was placed consisting of a cast iron monument with a sign and post on the east side

AND on the 26th day of May, 2021, said permanent marker was found down 0.1'± and the ties were updated

Updated reference ties are as shown below.



O P E N F I E L D



Revision Date  
7/28/21

N.A.D. 1983 Coordinates  
 (1996 Adjustment)

| County Project Coordinates |                    |
|----------------------------|--------------------|
| Northing                   | <u>150936.6923</u> |
| Easting                    | <u>542441.0075</u> |
| Date                       | <u>4/10/98</u>     |

I hereby certify that this United States public land survey monument record is correct and complete to the best of my knowledge and belief.  
*David M Zieglmeier* Date 8/30/21  
 David Zieglmeier Anoka County Surveyor  
 Minnesota License Number 46179

# HISTORY OF GOVERNMENT CORNER

Page No. 60

County of Anoka

State of Minnesota

## West 1/4 Corner of Sec. 16 Township 31 Range 22

### **CORNER HISTORY:**

March 19, 1969 – Set Cast Iron Monument flush with the surface using area resurvey. Established ties to monument.

July 6, 1973 – Found Cast Iron Monument and updated ties.

May 19, 1977 – Found Cast Iron Monument and updated ties.

August 15, 1980 – Found Cast Iron Monument and updated ties.

June 19, 1996 – Found Cast Iron Monument with a sign and post on the east side and updated ties.

April 10, 1998 – Found Cast Iron Monument and established NAD 1983 (1996 Adjustment) Anoka County Project Coordinates by Static GPS methods. Updated ties.

September 9, 2010 – Found Cast Iron Monument flush with the surface with a sign and post on the east side. Updated ties.

February 3, 2017 – Found Cast Iron Monument down  $0.3' \pm$  with a sign and post on the east side. Updated ties.

May 26, 2021 – Found Cast Iron Monument down  $0.1' \pm$  with a sign and post on the east side. Updated ties.