

# CERTIFICATE OF LOCATION OF GOVERNMENT CORNER

County of Anoka

State of Minnesota

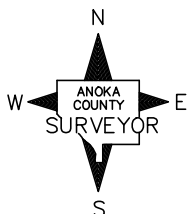
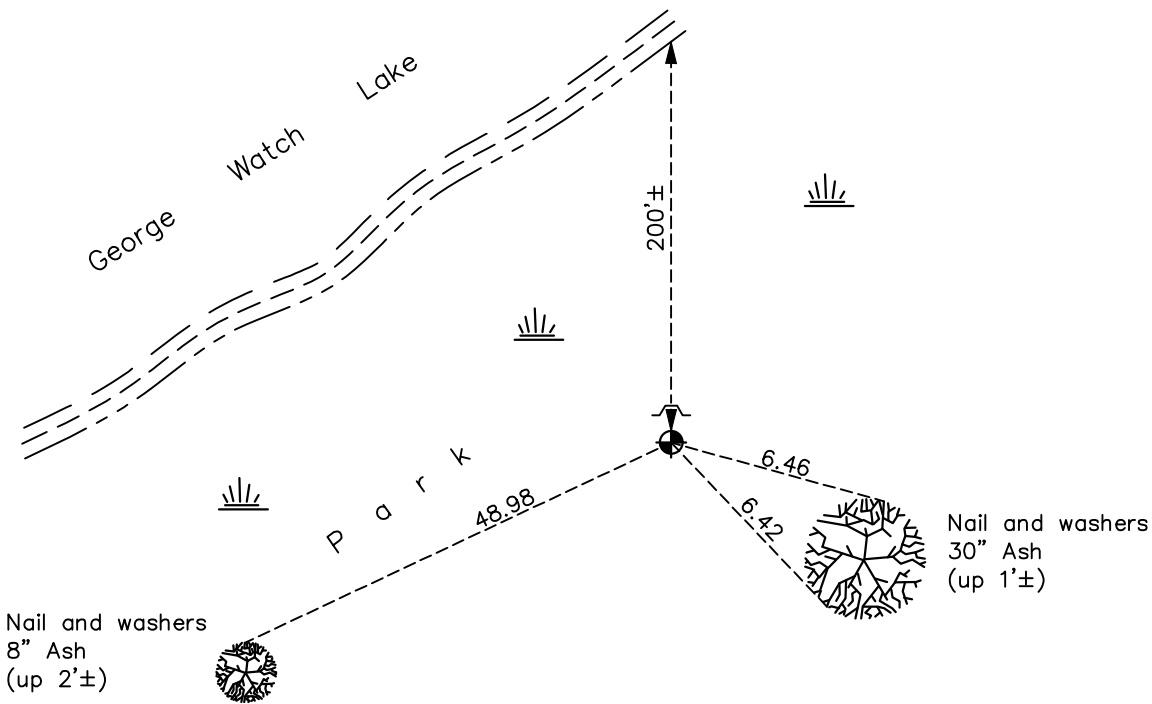
Witness Corner of Sec. 16 Township 31 Range 22  
(on east line of section)

On the 19th day of March, 1969, the described corner was evidenced by area resurvey

and to perpetuate the location of said corner, at the exact location thereof, a permanent marker was placed consisting of a cast iron monument with a sign and post on the north side

AND on the 17th day of May, 2021, said permanent marker was found down 0.2'± and the ties were updated. Corner is north of Campsite No. 45.

Updated reference ties are as shown below.



Revision Date

7/28/21

N.A.D. 1983 Coordinates  
(1996 Adjustment)

County Project Coordinates	
Northing	<u>150401.9486</u>
Easting	<u>547701.9591</u>
Date	<u>2/13/98</u>

I hereby certify that this United States public land survey monument record is correct and complete to the best of my knowledge and belief.

*David M Zieglmeier* Date 8/30/21

David Zieglmeier Anoka County Surveyor  
Minnesota License Number 46179

# HISTORY OF GOVERNMENT CORNER

Page No. 61

County of Anoka

State of Minnesota

Witness Corner of Sec. 16 Township 31 Range 22  
(on east line of section)

## **CORNER HISTORY:**

March 19, 1969 – Set Cast Iron Monument flush with the surface and 532.06 south from theoretical East 1/4 corner of section 16 using area resurvey. Established ties to monument.

July 18, 1973 – Found Cast Iron Monument and updated ties.

June 9, 1977 – Found Cast Iron Monument and updated ties.

June 16, 1983 – Found Cast Iron Monument and updated ties.

July 29, 1986 – Found Cast Iron Monument and updated ties.

October 14, 1991 – Found Cast Iron Monument and updated ties.

June 24, 1996 – Found Cast Iron Monument and updated ties.

February 13, 1998 – Found Cast Iron Monument and established NAD 1983 (1996 Adjustment) Anoka County Project Coordinates by Static GPS methods. Updated ties.

September 9, 2010 – Found Cast Iron Monument flush with the surface with a sign and post on the north side and updated ties. Corner is north of Campsite No. 45.

November 21, 2016 – Found Cast Iron Monument down  $0.2' \pm$  with a sign and post on the north side and updated ties. Corner is north of Campsite No. 45

May 17, 2021 – Found Cast Iron Monument down  $0.2' \pm$  with a sign and post on the north side and updated ties. Corner is north of Campsite No. 45