

CERTIFICATE OF LOCATION OF GOVERNMENT CORNER

County of Anoka

State of Minnesota

Witness Corner of Sec. 14 Township 31 Range 22

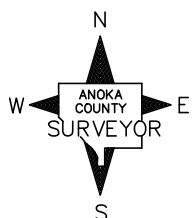
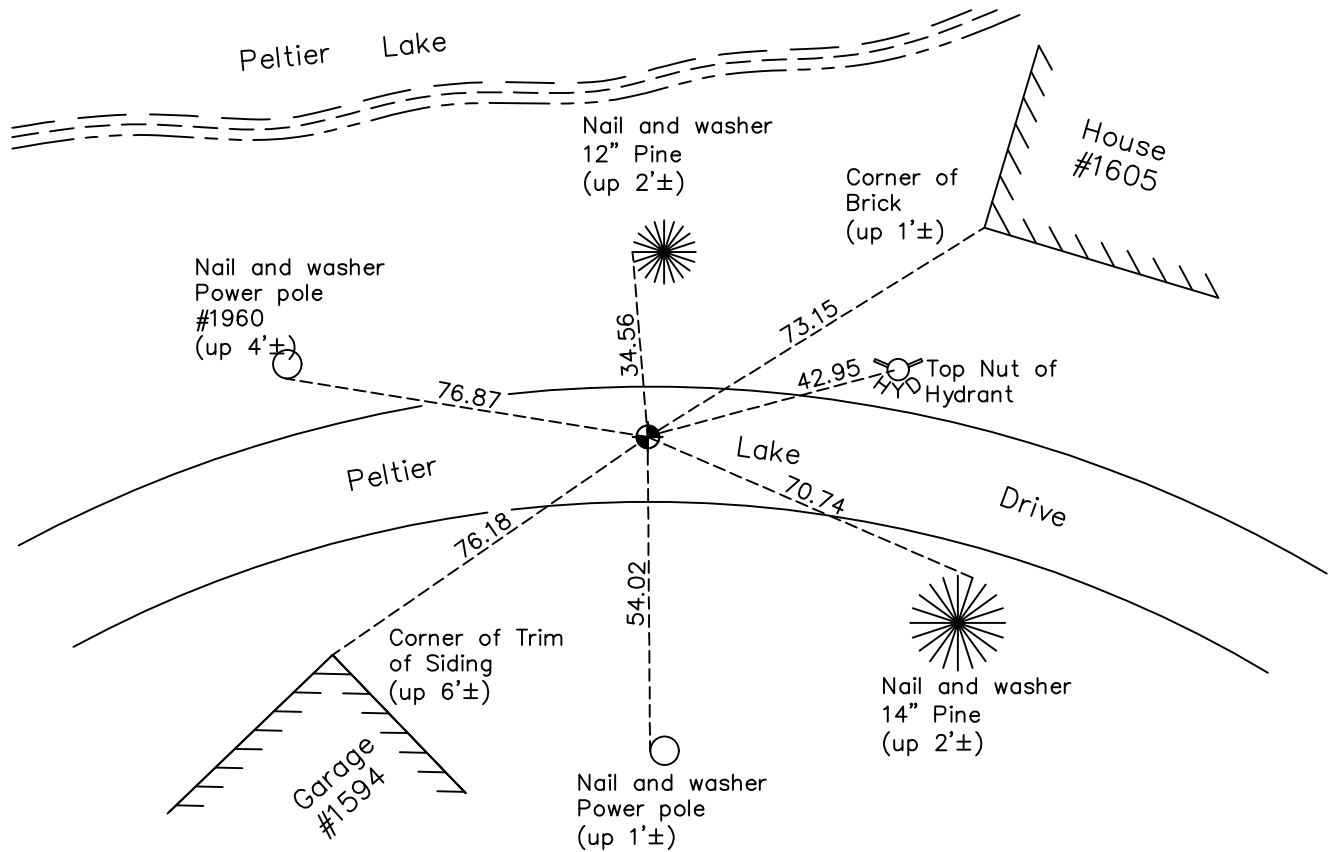
(On west line of section)

On the 31st day of July, 1964, the described corner was evidenced by a 1/2" Iron Pipe

and to perpetuate the location of said corner, at the exact location thereof, a permanent marker was placed consisting of a cast iron monument 3'± North of centerline

AND on the 26th day of January, 2023, said permanent marker was found flush, position verified by County RTK GPS method, tie history reviewed and the Coordinates were updated to 2011 adj

Updated reference ties are as shown below.



N.A.D. 1983 Coordinates
(2011 Adjustment)

County Project Coordinates	
Northing	149643.475
Easting	552966.276
Date	1/26/2023

Revision Date
1/30/2023

I hereby certify that this United States public land survey monument record is correct and complete to the best of my knowledge and belief.

David Zieglmeier Date 2/28/23

David Zieglmeier Anoka County Surveyor
Minnesota License Number 46179

HISTORY OF GOVERNMENT CORNER

Page No. 62

County of Anoka

State of Minnesota

Witness Corner of Sec. 14 Township 31 Range 22
(On west line of section)

CORNER HISTORY:

March 25, 1964 – Used 1/2” Iron Pipe found 1471.90’ north of SW corner of Section 14. Witness corner is the same as the NE corner of Burques Addition. Established ties to monument.

July 31, 1964 – Replaced Iron Pipe with a Cast Iron Monument set flush with the surface. Updated ties.

July 9, 1965 – Found Cast Iron Monument and updated ties.

August 6, 1969 – Found Cast Iron Monument and updated ties.

June 28, 1973 – Found Cast Iron Monument and updated ties.

June 5, 1998 – Found Cast Iron Monument 1’± north of centerline and established NAD 1983 (1996 Adjustment) Anoka County Project Coordinates by Static GPS methods. Updated ties..

May 12, 2009 – Set construction ties and removed Cast Iron Monument prior to road construction

August 13, 2010 – Set Cast Iron Monument flush with the surface after road construction and updated ties. Verified location of corner by Static GPS methods.

September 27, 2016 – Found Cast Iron Monument flush with the surface and 3’± north of centerline and updated ties. Verified location of corner by VRS GPS methods.

May 10, 2021 – Found Cast Iron Monument flush with the surface and 3’± north of centerline and updated ties. Verified location of corner by VRS GPS methods.

January 26, 2023 – Found cast iron monument flush, position verified by County RTK GPS method and the tie history was reviewed. Position requires Coordinates update to 2011 adjustment. Previous Coordinates NAD 1983 (1996 adj) Northing 149643.3749; Easting 552966.3989