

# CERTIFICATE OF LOCATION OF GOVERNMENT CORNER

County of Anoka

State of Minnesota

Witness Corner of Sec. 14 Township 31 Range 22

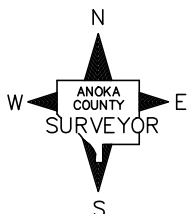
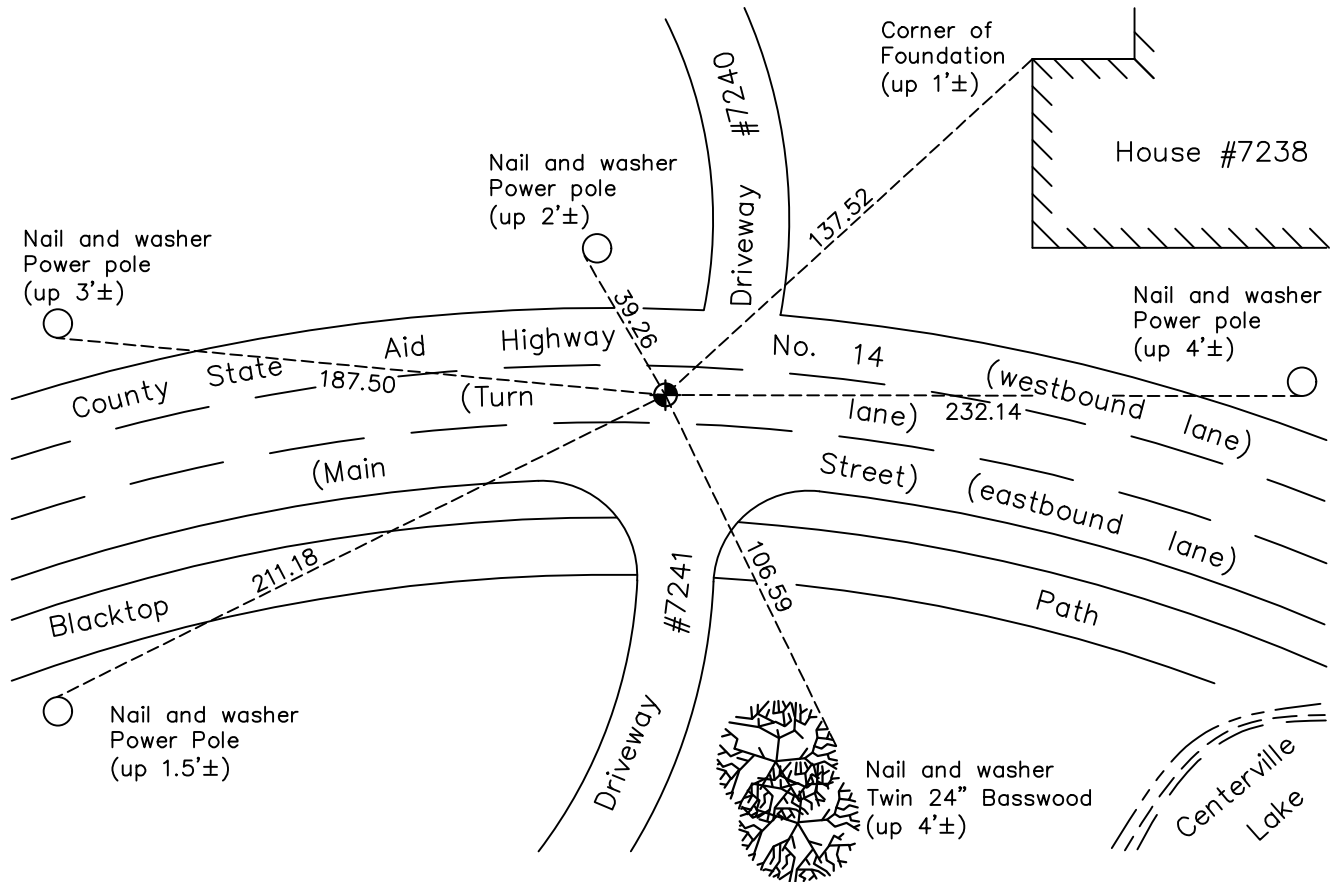
(On west line of SW1/4)

On the 8th day of June, 1998, the described corner was evidenced by area resurvey

and to perpetuate the location of said corner, at the exact location thereof, a permanent marker was placed consisting of a cast iron monument

AND on the 10th day of May, 2021, said permanent marker was found flush with the surface and the ties were updated

Updated reference ties are as shown below.



Revision Date

7/28/21

N.A.D. 1983 Coordinates  
(1996 Adjustment)

County Project Coordinates	
Northing	<u>148843.8305</u>
Easting	<u>552971.7666</u>
Date	<u>6/08/98</u>

I hereby certify that this United States public land survey monument record is correct and complete to the best of my knowledge and belief.

*David M Zieglmeier* Date 8/30/21

David Zieglmeier Anoka County Surveyor  
Minnesota License Number 46179

# HISTORY OF GOVERNMENT CORNER

Page No. 63

County of Anoka

State of Minnesota

Witness Corner of Sec. 14 Township 31 Range 22  
(On west line of SW1/4)

## **CORNER HISTORY:**

March 25, 1964— Set Bridge Spike using area resurvey. Corner is 345.33' north of theoretical SW corner of Section 14. Established ties to monument.

July 31, 1964 – Replaced Bridge Spike with Cast Iron Monument and updated ties.

July 9, 1965 – Found Cast Iron Monument and updated ties.

August 6, 1969 – Found Cast Iron Monument and updated ties.

June 20, 1973 – Found Cast Iron Monument and updated ties.

May 20, 1977 – Found Cast Iron Monument and updated ties.

February 18, 1998 – Found Cast Iron Monument and updated ties.

June 8, 1998 – Set Cast Iron Monument in new location using area resurvey and established NAD 1983 (1996 Adjustment) Anoka County Project Coordinates by Static GPS methods. Established ties to monument.

May 21, 2009 – Found Cast Iron Monument and updated ties.

July 6, 2010 – Found Cast Iron Monument flush with the surface and updated ties.

September 27, 2016 – Found Cast Iron Monument flush with the surface and verified location of corner by VRS GPS methods. Updated ties.

May 10, 2021 – Found Cast Iron Monument flush with the surface and verified location of corner by VRS GPS methods. Updated ties.