

CERTIFICATE OF LOCATION OF GOVERNMENT CORNER

County of Anoka

State of Minnesota

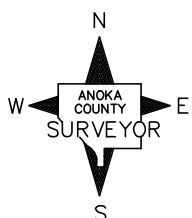
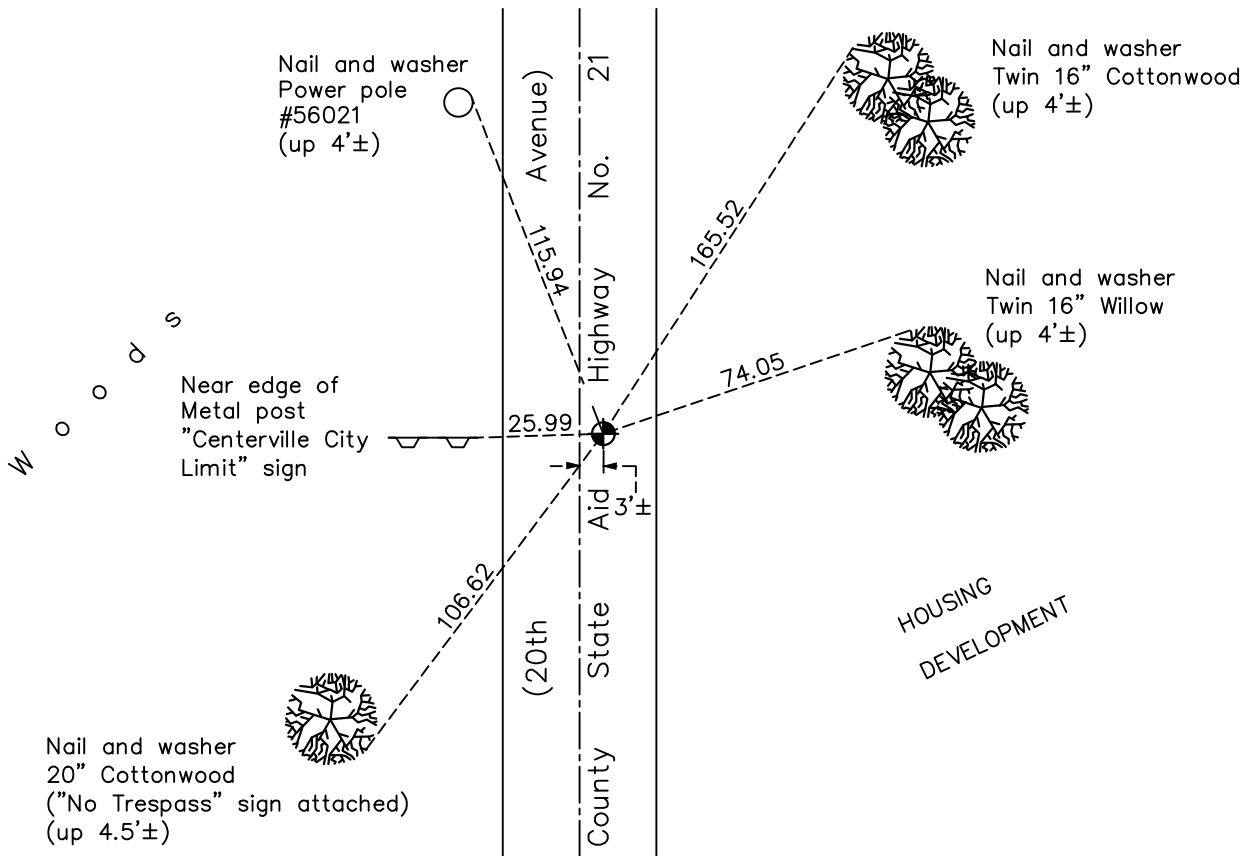
East 1/4 Corner of Sec. 14 Township 31 Range 22

On the 30th day of July, 1964, the described corner was evidenced by a 1/2" iron pipe set by C. O. George

and to perpetuate the location of said corner, at the exact location thereof, a permanent marker was placed consisting of a cast iron monument 2'± east of centerline

AND on the 11th day of May, 2021, said permanent marker was found 3'± east of centerline and the ties were updated

Updated reference ties are as shown below.



Revision Date
7/28/21

N.A.D. 1983 Coordinates
 (1996 Adjustment)

County Project Coordinates	
Northing	<u>150932.9960</u>
Easting	<u>558234.1705</u>
Date	<u>7/20/98</u>

I hereby certify that this United States public land survey monument record is correct and complete to the best of my knowledge and belief.
David M Zieglmeier Date 8/30/21
 David Zieglmeier Anoka County Surveyor
 Minnesota License Number 46179

HISTORY OF GOVERNMENT CORNER

County of Anoka

State of Minnesota

East 1/4 Corner of Sec. 14 Township 31 Range 22

CORNER HISTORY:

1963 – C. O. Georgi set 1/2" Iron Pipe. Established ties to monument.

July 30, 1964 – Replaced Iron Pipe with a Cast Iron Monument and updated ties. Set P.K. spikes 2.00' north and east.

June 22, 1965 – Found Cast Iron Monument and updated ties.

August 4, 1969 – Found Cast Iron Monument and updated ties.

July 9, 1970 – Removed Cast Iron Monument prior to road construction and updated ties.

June 18, 1973 – Found Cast Iron Monument and updated ties. Date reset after road construction is unknown.

August 18, 1977 – Found Cast Iron Monument and updated ties.

October 31, 1986 – Found Cast Iron Monument and updated ties.

August 30, 1991 – Found Cast Iron Monument and updated ties.

June 18, 1996 – Found Cast Iron Monument and updated ties.

July 20, 1998 – Found Cast Iron Monument and established NAD 1983 (1996 Adjustment) Anoka County Project Coordinates by Static GPS methods. Updated ties.

July, 2010 – Found Cast Iron Monument 4'± east of centerline and updated ties.

October 10, 2016 – Found Cast Iron Monument 3'± east of centerline. Verified location of corner by VRS GPS methods and updated ties.

May 11, 2021 – Found Cast Iron Monument 3'± east of centerline. Verified location of corner by VRS GPS methods and updated ties.