

# CERTIFICATE OF LOCATION OF GOVERNMENT CORNER

County of Anoka

State of Minnesota

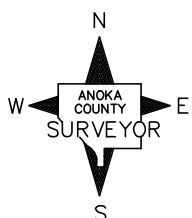
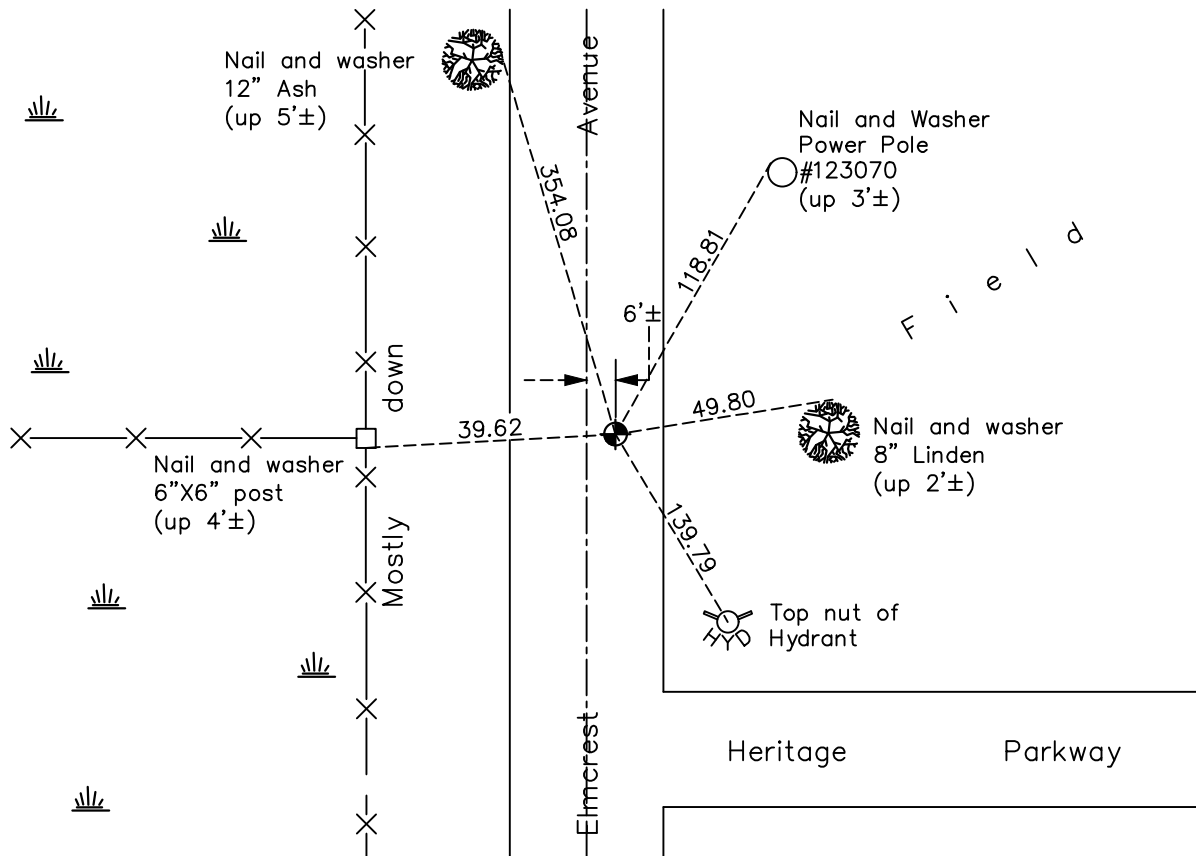
## East 1/4 Corner of Sec. 13 Township 31 Range 22

On the 23rd day of September, 1975, the described corner was evidenced by area resurvey

and to perpetuate the location of said corner, at the exact location thereof, a permanent marker was placed consisting of a cast iron monument

AND on the 26th day of May, 2021, said permanent marker was found broken down  
0.8'±, reset partial CIM flush to surface. the ties were updated

Updated reference ties are as shown below.



Revision Date  
7/28/21

N.A.D. 1983 Coordinates  
(1996 Adjustment)

County Project Coordinates	
Northing	<u>151002.5237</u>
Easting	<u>563566.6505</u>
Date	<u>3/30/98</u>

I hereby certify that this United States public land survey monument record is correct and complete to the best of my knowledge and belief.

*David M Zieglmeier* Date 8/30/21

David Zieglmeier Anoka County Surveyor  
 Minnesota License Number 46179

# HISTORY OF GOVERNMENT CORNER

Page No. 66

County of Anoka

State of Minnesota

## East 1/4 Corner of Sec. 13 Township 31 Range 22

### **CORNER HISTORY:**

August 28, 1975 – Found Spike set by Don Hult 3'± east of centerline and 3'± north of fence going west. Established ties to monument.

September 23, 1975 – Set Cast Iron Monument down 0.5'± using area resurvey. Updated ties

May 17, 1977 – Found Cast Iron Monument and updated ties.

July 28, 1980 – Found Cast Iron Monument and updated ties.

May 24, 1983 – Found Cast Iron Monument and updated ties.

July 21, 1986 – Found Cast Iron Monument and updated ties.

October 17, 1991 – Found Cast Iron Monument and updated ties.

June 28, 1996 – Found Cast Iron Monument and updated ties.

March 30, 1998 – Found Cast Iron Monument and established NAD 1983 (1996 Adjustment) Anoka County Project Coordinates by Static GPS methods. Updated ties.

July, 2010 – Found Cast Iron Monument down 0.8'± and updated ties.

September 13, 2016 – Found Cast Iron Monument down 0.8'±. Verified location of corner by VRS GPS methods. Updated ties.

May 26, 2021 – Found Cast Iron Monument broken down 0.8'±. Verified location of corner by VRS GPS methods. Reset partial CIM flush to surface. Updated ties.