

# CERTIFICATE OF LOCATION OF GOVERNMENT CORNER

County of Anoka

State of Minnesota

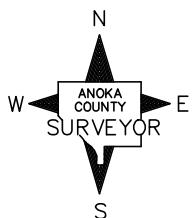
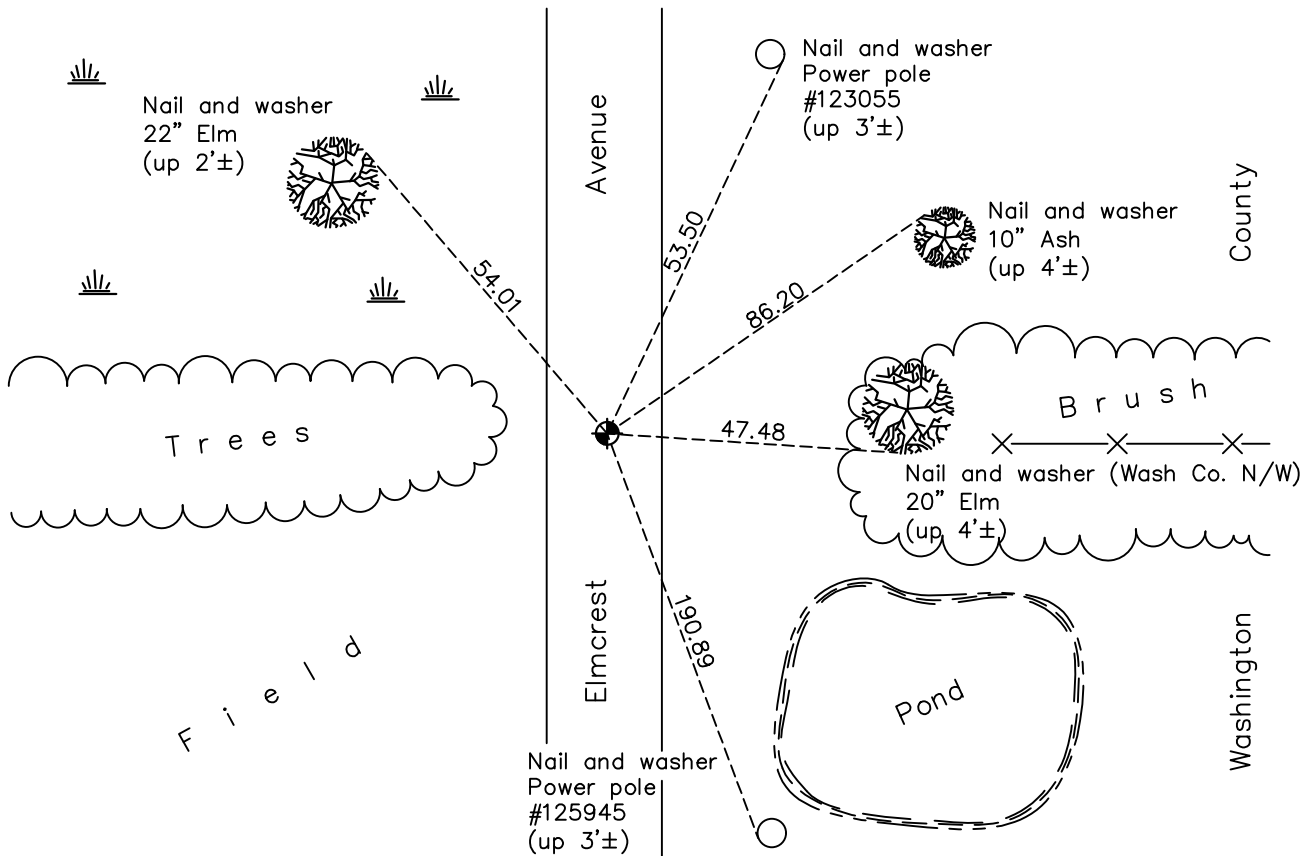
## Southeast Corner of Sec. 13 Township 31 Range 22

On the 13th day of August, 1964, the described corner was evidenced by a 3/4" iron pipe

and to perpetuate the location of said corner, at the exact location thereof, a permanent marker was placed consisting of a cast iron monument

AND on the 20th day of April, 2021, said permanent marker was found and the ties were updated. The monument is a Washington County cast iron monument flush with the surface.

Updated reference ties are as shown below.



Revision Date  
 7/28/21

N.A.D. 1983 Coordinates  
 (1996 Adjustment)

County Project Coordinates	
Northing	148383.8201
Easting	563554.1265
Date	3/30/98

I hereby certify that this United States public land survey monument record is correct and complete to the best of my knowledge and belief.  
*David M Zieglmeier* Date 8/30/21  
 David Zieglmeier Anoka County Surveyor  
 Minnesota License Number 46179

# HISTORY OF GOVERNMENT CORNER

Page No. 67

County of Anoka

State of Minnesota

## Southeast Corner of Sec. 13 Township 31 Range 22

### **CORNER HISTORY:**

August 13, 1964 – Found 3/4" Pinched Iron Pipe flush with the surface in center line of dirt road. Established ties to monument.

July 7, 1965 – Found Iron Pipe and updated ties.

August 5, 1969 – Replaced Iron Pipe with Cast Iron Monument down 0.4'± and updated ties.

June 21, 1973 – Found Cast Iron Monument and updated ties.

May 20, 1977 – Found Cast Iron Monument and updated ties.

October 18, 1991 – Found Cast Iron Monument and updated ties.

June 28, 1996 – Found Cast Iron Monument and updated ties.

March 30, 1998 – Found Cast Iron Monument and established NAD 1983 (1996 Adjustment) Anoka County Project Coordinates by Static GPS methods. Updated ties.

July 23, 2010 – Found Cast Iron Monument and updated ties. The monument is a Washington County cast iron monument flush with the surface.

December 30, 2016 – Found Cast Iron Monument and updated ties. The monument is a Washington County cast iron monument flush with the surface.

April 20, 2021 – Found Cast Iron Monument and updated ties. The monument is a Washington County cast iron monument flush with the surface. Verified location of corner by VRS GPS methods.