

# CERTIFICATE OF LOCATION OF GOVERNMENT CORNER

County of Anoka

State of Minnesota

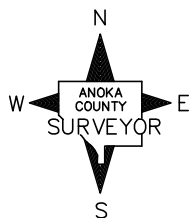
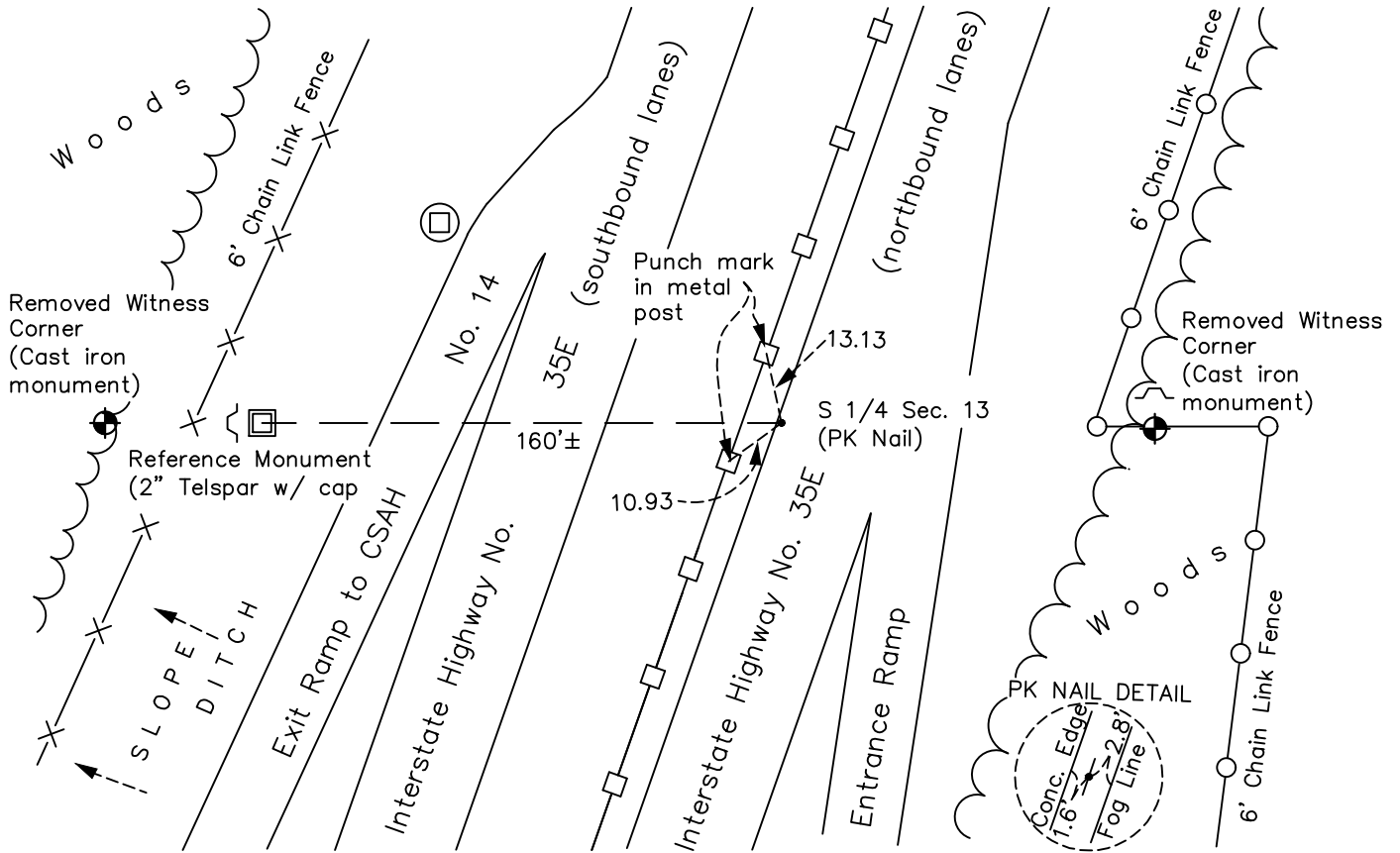
## South 1/4 Corner of Sec. 13 Township 31 Range 22

On the 23rd day of September, 1975, the described corner was evidenced by an area resurvey

and to perpetuate the location of said corner, at the exact location thereof, a permanent marker was placed consisting of a 1" iron pipe at the South 1/4 corner with a cast iron monument at each witness corner with a sign and post on the north side of each witness monument

AND on the 21st day of July, 2023, said permanent marker was set w/ PK nail to published coordinates & established ties. Removed existing CIM witness mon. & set new Reference Mon. (#1632)

Updated reference ties are as shown below.



Revision Date

10/10/2023

N.A.D. 1983 Coordinates  
(2011 Adjustment)

County Project Coordinates	
Northing	148335.2918
Easting	560886.6326
Date	3/26/1998

I hereby certify that this United States public land survey monument record is correct and complete to the best of my knowledge and belief.

*David Zieglsmeier* Date 12/11/23

David M. Zieglsmeier, Anoka County Surveyor

Minnesota License Number 46179

# REFERENCE MONUMENT FOR GOVERNMENT CORNER

*Reference to* County of Anoka State of Minnesota

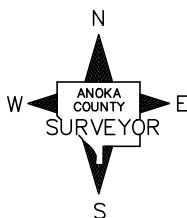
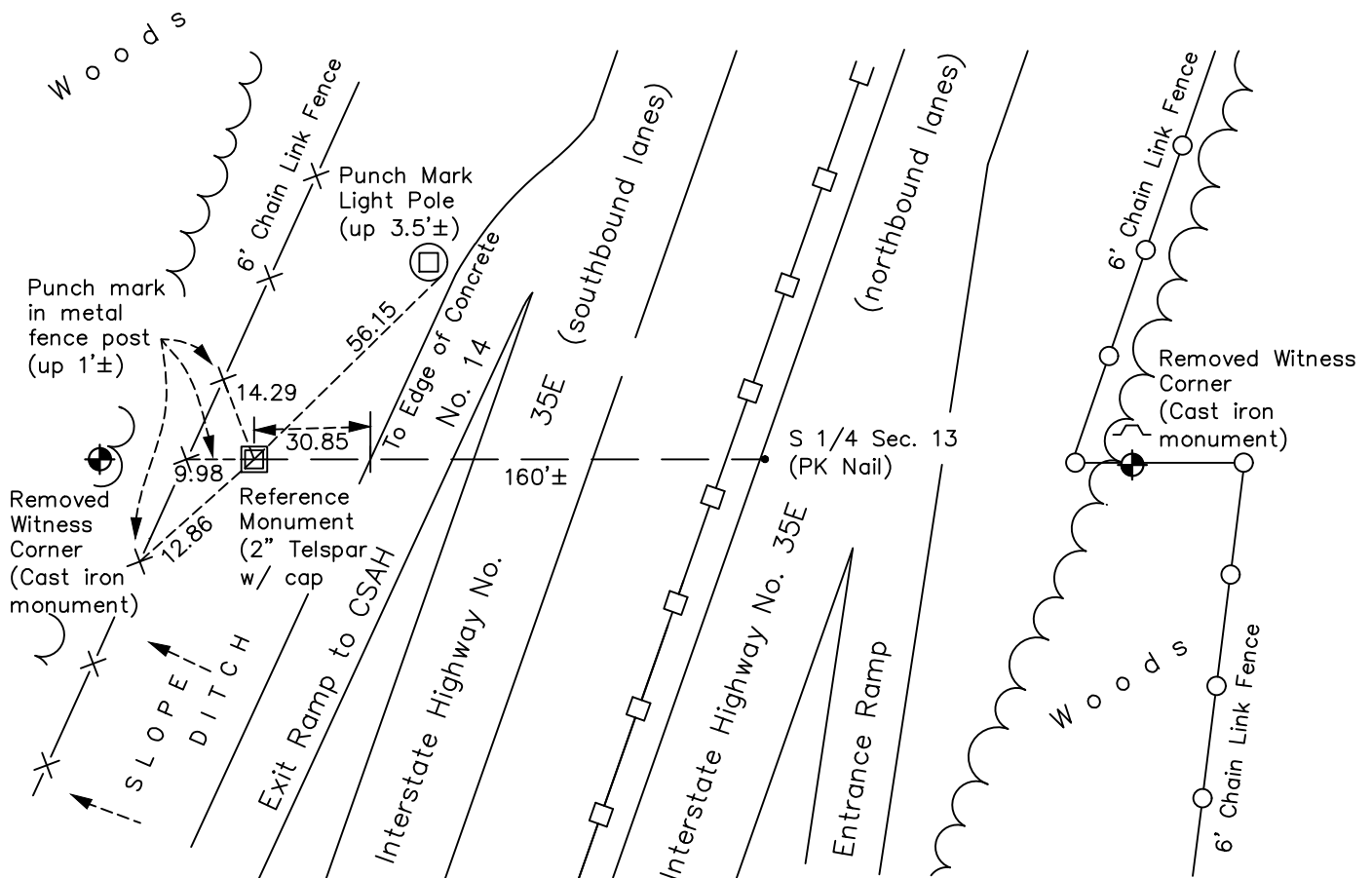
## South 1/4 Corner of Sec. 13 Township 31 Range 22

On the 21st day of July, 2023, the described reference monument was evidenced by a computed position 160' westerly along the section line

and to reference the location of said corner, at the exact location thereof, a permanent marker was placed consisting of a 2" square steel Telspar with aluminum cap and punch mark left up 0.4'±

AND on the 21st day of July, 2023, said permanent marker was set up 0.4'± using ACS GPS ACS method and ties were established for the reference monument

Updated reference ties are as shown below.



Revision Date  
10/10/2023

**REFERENCE MONUMENT**  
N.A.D. 1983 (2011 Adj.)

County Project Coordinates	
Northing	148332.5624
Easting	560736.6574
Date	7/21/2023

# HISTORY OF GOVERNMENT CORNER

Page No. 68

County of Anoka

State of Minnesota

## South 1/4 Corner of Sec. 13 Township 31 Range 22

### **CORNER HISTORY:**

September 23, 1975 – Set 1” Iron Pipe at location of South 1/4 corner using area resurvey with Cast Iron Monuments set flush with the surface east and west of South 1/4 as witness corners. Set sign and post on the north side of both witness corners. P.K. nails were set 2.00’ north and east of South 1/4 corner.

May 17, 1977 – Found witness corner Cast Iron Monuments and updated ties.

July 28, 1980 – Found witness corner Cast Iron Monuments and updated ties.

October 23, 1991 – Found witness corner Cast Iron Monuments with signs and posts on the north side and updated ties.

July 15, 1996 – Found witness corner Cast Iron Monuments and updated ties.

March 26, 1998 – Found Iron Pipe at location of South 1/4 corner and witness corner Cast Iron Monuments with signs and posts on the north side of witness corners. Established NAD 1983 (1996 Adjustment) Anoka County Project Coordinates by Static GPS methods on South 1/4 corner. Updated ties.

September 29, 2010 – South 1/4 corner was not found. Location is in northbound lane – widened for CSAH No. 14 construction. Found witness corner Cast Iron Monuments and updated ties.

January 26, 2017 – Found witness corner Cast Iron Monuments and updated ties.

May 25, 2021 – Found witness corner Cast Iron Monuments and updated ties.

July 21, 2023 – Set PK nail flush in concrete surface, to published coordinates, using ACS RTK GPS method. Established ties to PK Nail. Found and removed CIM Witness corners 175.0’ to West and 120.0’ to East. Set new reference monument to a position 160’± westerly along the section line from the south 1/4 Corner consisting of a square steel Telspar with aluminum cap and punch mark, set up 0.4’±. Established ties to the reference monument.