

# CERTIFICATE OF LOCATION OF GOVERNMENT CORNER

County of Anoka

State of Minnesota

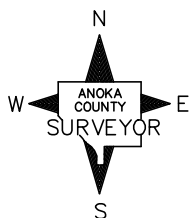
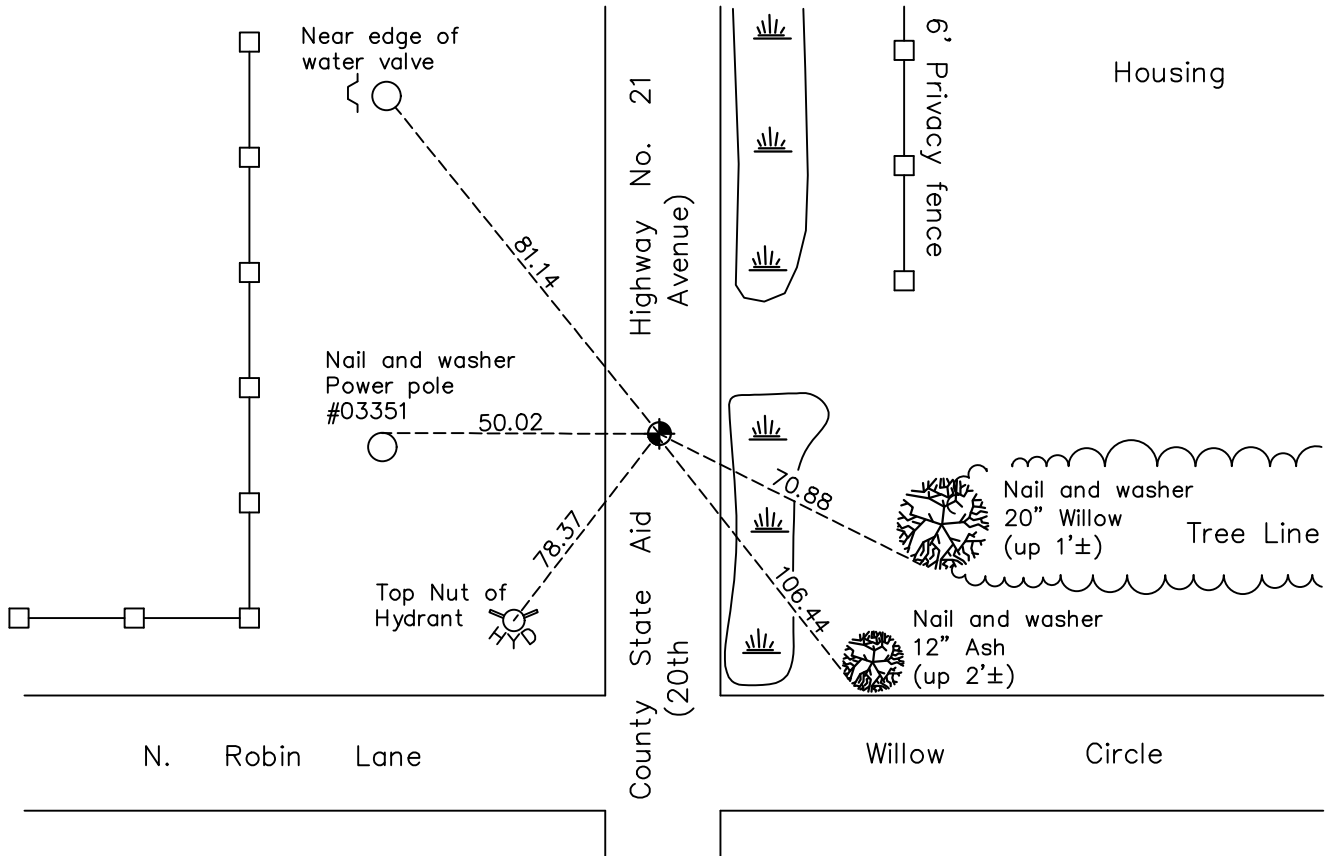
## Southeast Corner of Sec. 14 Township 31 Range 22

On the 23rd day of March, 1962, the described corner was evidenced by a concrete monument

and to perpetuate the location of said corner, at the exact location thereof, a permanent marker was placed consisting of a cast iron monument on top of the concrete monument

AND on the 11th day of May, 2021, said permanent marker was found flush with the surface and the ties were updated

Updated reference ties are as shown below.



Revision Date  
7/28/21

N.A.D. 1983 Coordinates  
(1996 Adjustment)

County Project Coordinates	
Northing	<u>148287.3379</u>
Easting	<u>558251.6516</u>
Date	<u>7/20/98</u>

I hereby certify that this United States public land survey monument record is correct and complete to the best of my knowledge and belief.

*David M Zieglmeier* Date 8/30/21

David Zieglmeier Anoka County Surveyor  
Minnesota License Number 46179

# HISTORY OF GOVERNMENT CORNER

Page No. 69

County of Anoka

State of Minnesota

## Southeast Corner of Sec. 14 Township 31 Range 22

### **CORNER HISTORY:**

October 9, 1945 – Cartwright found Concrete Monument with top broken off down 0.5'±. Established ties to monument.

December 21, 1959 – Milner W. Carley found Concrete Monument and updated ties.

March 23, 1962 – Found Concrete Monument with top broken off down 0.2'± and updated ties. Set 3/4" Iron Pipe on north side.

June 22, 1965 – Found Concrete Monument and updated ties.

August 5, 1969 – Set Cast Iron Monument flush with the surface on top of broken Concrete Monument. Set P.K. nails 2.00' north and east. Updated ties.

July 9, 1970 – Set construction ties and removed Cast Iron Monument prior to road construction.

August 18, 1976 – Found Concrete Monument and updated ties.

July 25, 1980 – Found Concrete Monument and updated ties.

July 7, 1986 – Found Cast Iron Monument on top of Concrete Monument and updated ties. Date cast iron monument was reset is unknown.

August 30, 1991 – Found Cast Iron Monument on top of Concrete Monument and updated ties.

June 18, 1996 – Found Cast Iron Monument and updated ties.

July 20, 1998 – Found Cast Iron Monument and established NAD 1983 (1996 Adjustment) Anoka County Project Coordinates by Static GPS methods. Updated ties.

July 23, 2010 – Found Cast Iron Monument up 0.05'± and updated ties.

January 3, 2017 – Found Cast Iron Monument flush with the surface and updated ties.

May 11, 2021 – Found Cast Iron Monument flush with the surface. Verified location of corner by VRS GPS methods, and updated ties.