

# CERTIFICATE OF LOCATION OF GOVERNMENT CORNER

County of Anoka

State of Minnesota

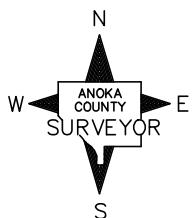
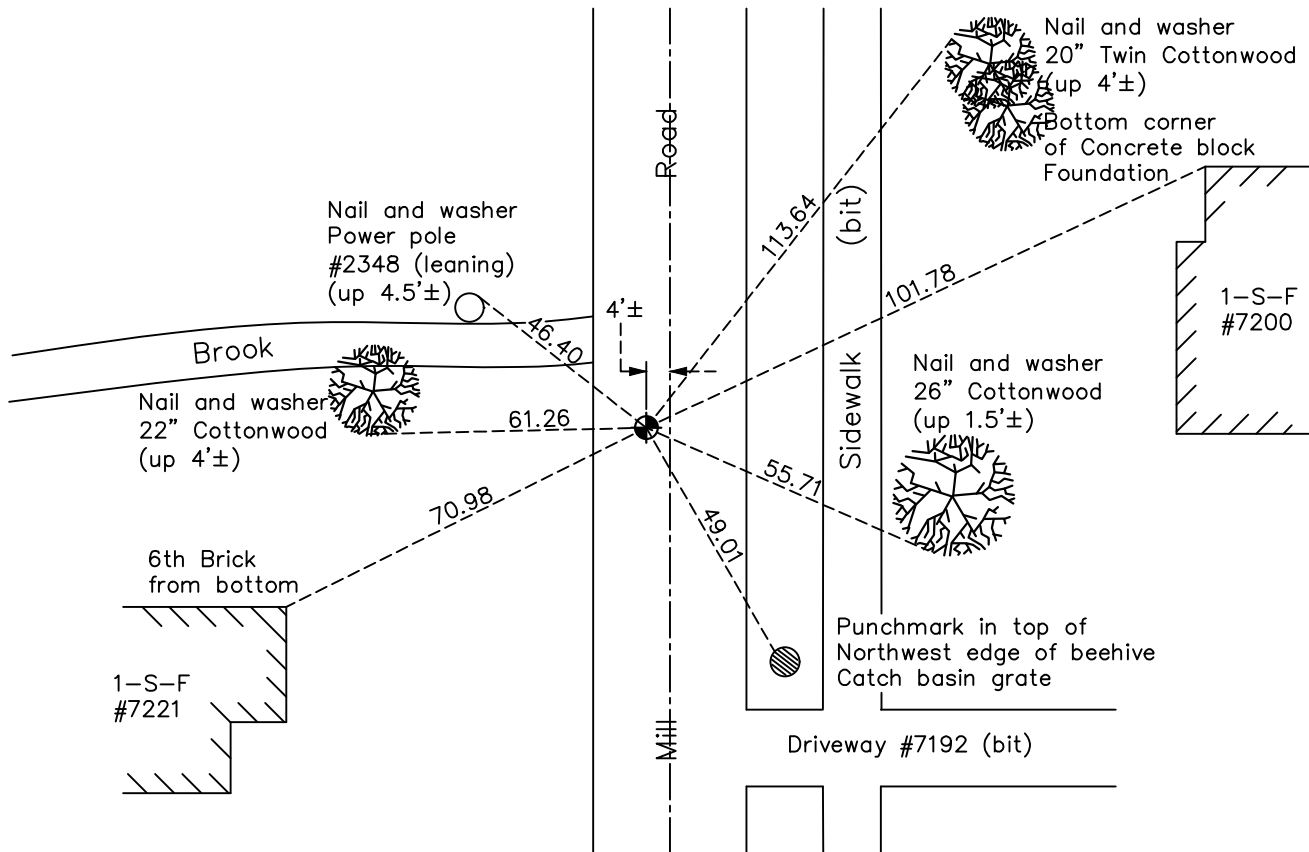
## South $\frac{1}{4}$ Corner of Sec. 14 Township 31 Range 22

On the 23rd day of March, 1962, the described corner was evidenced by a concrete monument

and to perpetuate the location of said corner, at the exact location thereof, a permanent marker was placed consisting of a cast iron monument

AND on the 12th day of May, 2021, said permanent marker was found and the ties were updated

Updated reference ties are as shown below.



Revision Date  
7/28/21

N.A.D. 1983 Coordinates  
 (1996 Adjustment)

| County Project Coordinates |                    |
|----------------------------|--------------------|
| Northing                   | <u>148299.1407</u> |
| Easting                    | <u>555610.1240</u> |
| Date                       | <u>2/25/98</u>     |

I hereby certify that this United States public land survey monument record is correct and complete to the best of my knowledge and belief.  
*David M Zieglmeier* Date 8/30/21  
 David Zieglmeier Anoka County Surveyor  
 Minnesota License Number 46179

# HISTORY OF GOVERNMENT CORNER

Page No. 70

County of Anoka

State of Minnesota

## South 1/4 Corner of Sec. 14 Township 31 Range 22

### **CORNER HISTORY:**

October 9, 1945 – Cartwright found Concrete Monument down 0.5'±. Established ties to monument.

December 21, 1959 – Milner W. Carley found Concrete Monument and set iron pipe near monument. Updated ties.

March 23, 1962 – Found Concrete Monument with top broken off down 0.5'± and 3/4" Iron Pipe on the south side of Monument. Updated ties.

January 6, 1964 – Found Concrete Monument with top broken off down 0.5'± and iron pipe on south side of monument. Added and updated ties to monument because of ditch construction.

July 9, 1965 – Found Concrete Monument and updated ties.

August 5, 1969 – Found Concrete Monument down 1.5'±. Set Cast Iron Monument down 0.4'± on top of Concrete Monument and updated ties.

June 18, 1973 – Found Cast Iron Monument and updated ties.

August 18, 1976 – Found Cast Iron Monument and updated ties.

May 25, 1978 – Replaced Cast Iron Monument after road construction and updated ties.

April 25, 1980 – Raised Cast Iron Monument to flush with the surface after road construction and set P.K. nails 2.00' north and east. Updated ties.

July 30, 1980 – Found Cast Iron Monument and updated ties.

October 7, 1986 – Found Cast Iron Monument and updated ties.

August 30, 1991 – Found Cast Iron Monument and updated ties.

June 18, 1996 – Found Cast Iron Monument and updated ties.

February 25, 1998 – Found Cast Iron Monument and established NAD 1983 (1996 Adjustment) Anoka County Project Coordinates by Static GPS methods. Updated ties.

July, 2010 – Found Cast Iron Monument and updated ties.

October 13, 2016 – Found Cast Iron Monument and updated ties. Verified location of corner by VRS GPS methods.

May 12, 2021 – Found Cast Iron Monument and updated ties.