

CERTIFICATE OF LOCATION OF GOVERNMENT CORNER

County of Anoka

State of Minnesota

Witness Corner of Sec. 14 Township 31 Range 22

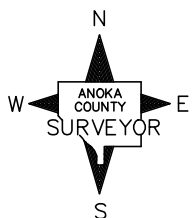
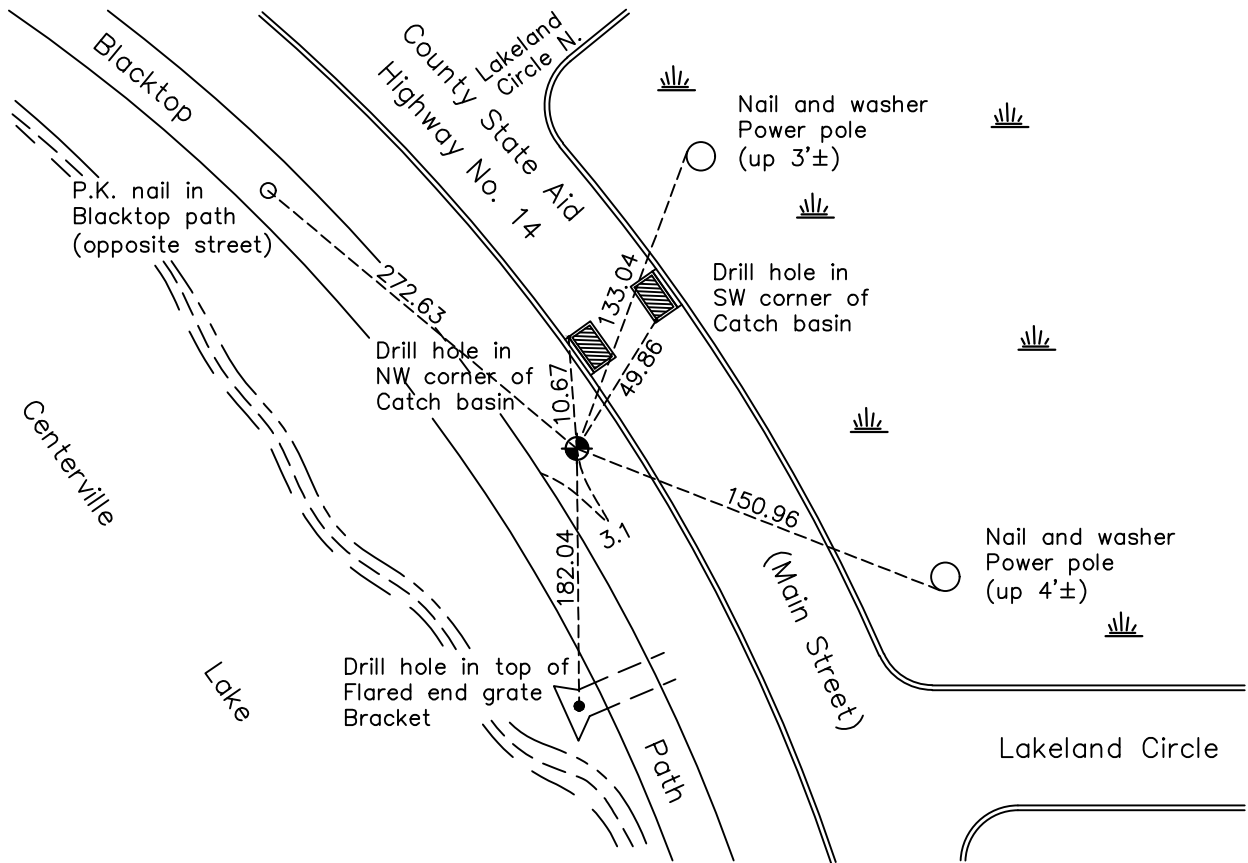
(On south line of SW1/4)

On the 25th day of March, 1964, the described corner was evidenced by area resurvey

and to perpetuate the location of said corner, at the exact location thereof, a permanent marker was placed consisting of a cast iron monument

AND on the 17th day of May, 2021, said permanent marker was found flush with the surface and the ties were updated

Updated reference ties are as shown below.



Revision Date
7/28/21

N.A.D. 1983 Coordinates
 (1996 Adjustment)

County Project Coordinates	
Northing	148307.9171
Easting	553551.9644
Date	2/02/98

I hereby certify that this United States public land survey monument record is correct and complete to the best of my knowledge and belief.

David M Zieglmeier Date 8/30/21

David Zieglmeier Anoka County Surveyor
 Minnesota License Number 46179

HISTORY OF GOVERNMENT CORNER

Page No. 71

County of Anoka

State of Minnesota

Witness Corner of Sec. 14 Township 31 Range 22
(On south line of SW1/4)

CORNER HISTORY:

March 25, 1964 – Found P.K. nail on centerline stripe of County Road #14 set using area resurvey. Established ties to monument.

July 30, 1964 – Replaced P.K. nail with a Cast Iron Monument and updated ties.

July 9, 1965 – Found Cast Iron Monument and updated ties.

August 6, 1969 – Replaced broken Cast Iron Monument down 0.5'± with a new Cast Iron Monument set flush with the surface. Updated ties.

June 22, 1973 – Found Cast Iron Monument and updated ties.

July 29, 1986 – Found Cast Iron Monument and updated ties.

November 7, 1991 – Found Cast Iron Monument and updated ties.

June 14, 1996 – Found Cast Iron Monument and updated ties.

February 2, 1998 – Found Cast Iron Monument and established NAD 1983 (1996 Adjustment) Anoka County Project Coordinates by Static GPS methods. Updated ties.

May 21, 2009 – Found Cast Iron Monument and updated ties.

July 6, 2010 – Found Cast Iron Monument flush with the surface and updated ties.

October 13, 2016 – Found Cast Iron Monument flush with the surface and updated ties. Verified location of corner by VRS GPS methods.

May 17, 2021 – Found Cast Iron Monument flush with the surface and updated ties. Verified location of corner by VRS GPS methods.