

CERTIFICATE OF LOCATION OF GOVERNMENT CORNER

County of Anoka

State of Minnesota

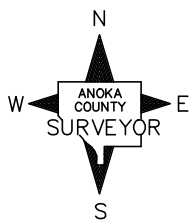
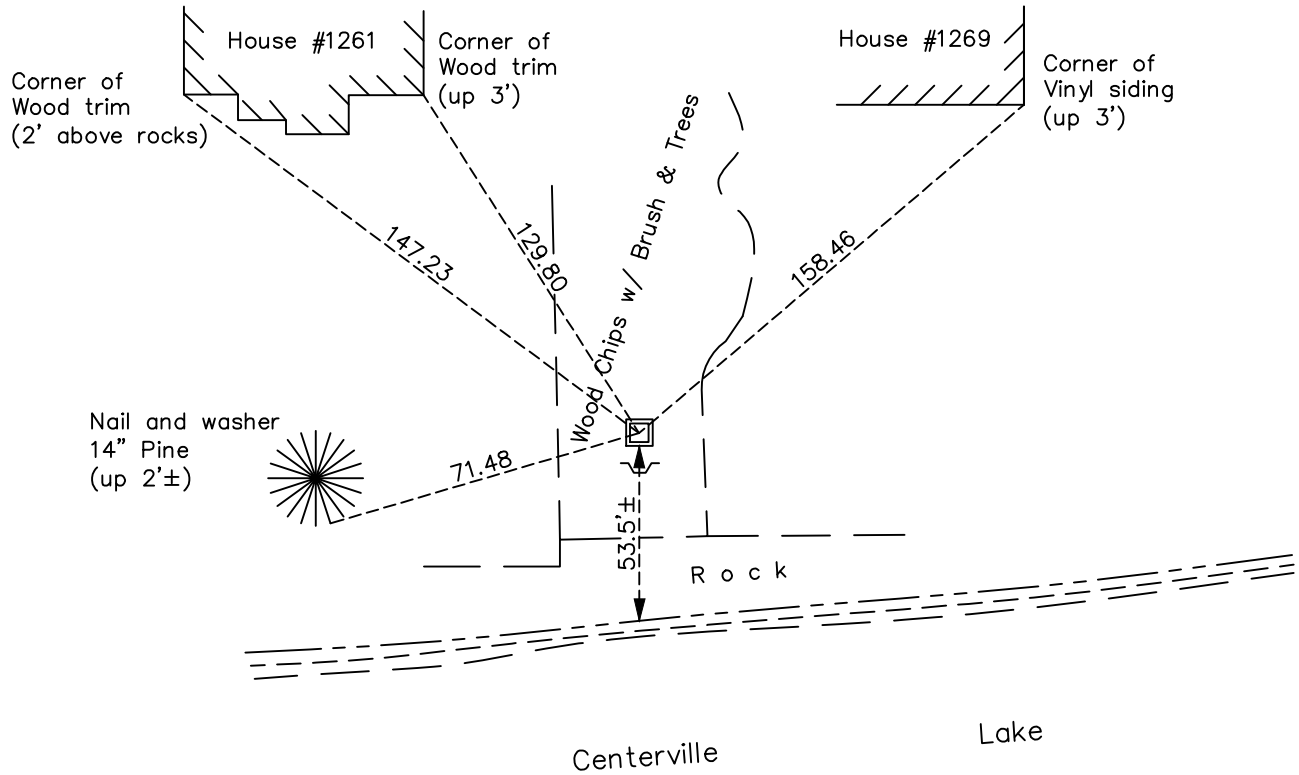
Witness Corner of Sec. 15 Township 31 Range 22
(On south line of section)

On the 27th day of September, 2017, the described corner was evidenced by area resurvey

and to perpetuate the location of said corner, at the exact location thereof, a permanent marker was placed consisting of a 2" X 6' square steel Telespar monument set up 0.5'± with a sign and post set 1'± south of monument

AND on the 17th day of May, 2021, said permanent marker was found 2"x 6' Telspar monument up 0.5'± and the ties were updated

Updated reference ties are as shown below.



Revision Date
7/28/21

N.A.D. 1983 Coordinates
(1996 Adjustment)

County Project Coordinates	
Northing	<u>148288.6021</u>
Easting	<u>548511.8935</u>
Date	<u>9/27/17</u>

I hereby certify that this United States public land survey monument record is correct and complete to the best of my knowledge and belief.

David M Zieglmeier Date 8/30/21

David Zieglmeier Anoka County Surveyor
Minnesota License Number 46179

HISTORY OF GOVERNMENT CORNER

Page No. 73

County of Anoka

State of Minnesota

Witness Corner of Sec. 15 Township 31 Range 22
(On south line of section)

CORNER HISTORY:

July 31, 1964 – Set cast iron monument 859.03 feet east of southwest corner of Section 15 using area resurvey. Monument is down $0.5' \pm$ in centerline of southwest–northeast road and $4' \pm$ south of centerline of road to west. Established ties to monument.

July 7, 1965 – Found cast iron monument and updated ties.

August 7, 1969 – Found cast iron monument and updated ties.

June 28, 1973 – Found cast iron monument and updated ties.

May 23, 1977 – Found cast iron monument and updated ties.

July 25, 1986 – Found cast iron monument and updated ties.

October 14, 1991 – Found cast iron monument and updated ties.

June 14, 1996 – Found cast iron monument and updated ties.

April 16, 1998 – Found cast iron monument and established NAD 1983 (1996 Adjustment) Anoka County Project Coordinates by Static GPS methods. Updated ties.

September 2, 2010 – Found rebar with all corner ties missing. Established new ties to rebar.

April 4, 2011 – Replaced rebar with a 2" X 5' square steel Telespar monument with a "County Surveyor" cap and punch mark set in water. Verified location of corner by VRS GPS methods and updated ties.

September 27, 2017 – Removed 2" X 5' Telespar monument and set a 2" X 6' square steel Telespar monument up $0.5' \pm$ westerly of the old monument using area resurvey. Verified location of computed corner location by Static and VRS GPS methods and established ties to new monument. Set a sign and post $1' \pm$ south of monument.

May 17, 2021 – Found 2" X 6' square steel Telespar monument up $0.5' \pm$ with a "County Surveyor" cap and punch mark. Verified location of corner by VRS GPS methods and updated ties.