

CERTIFICATE OF LOCATION OF GOVERNMENT CORNER

County of Anoka

State of Minnesota

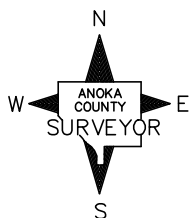
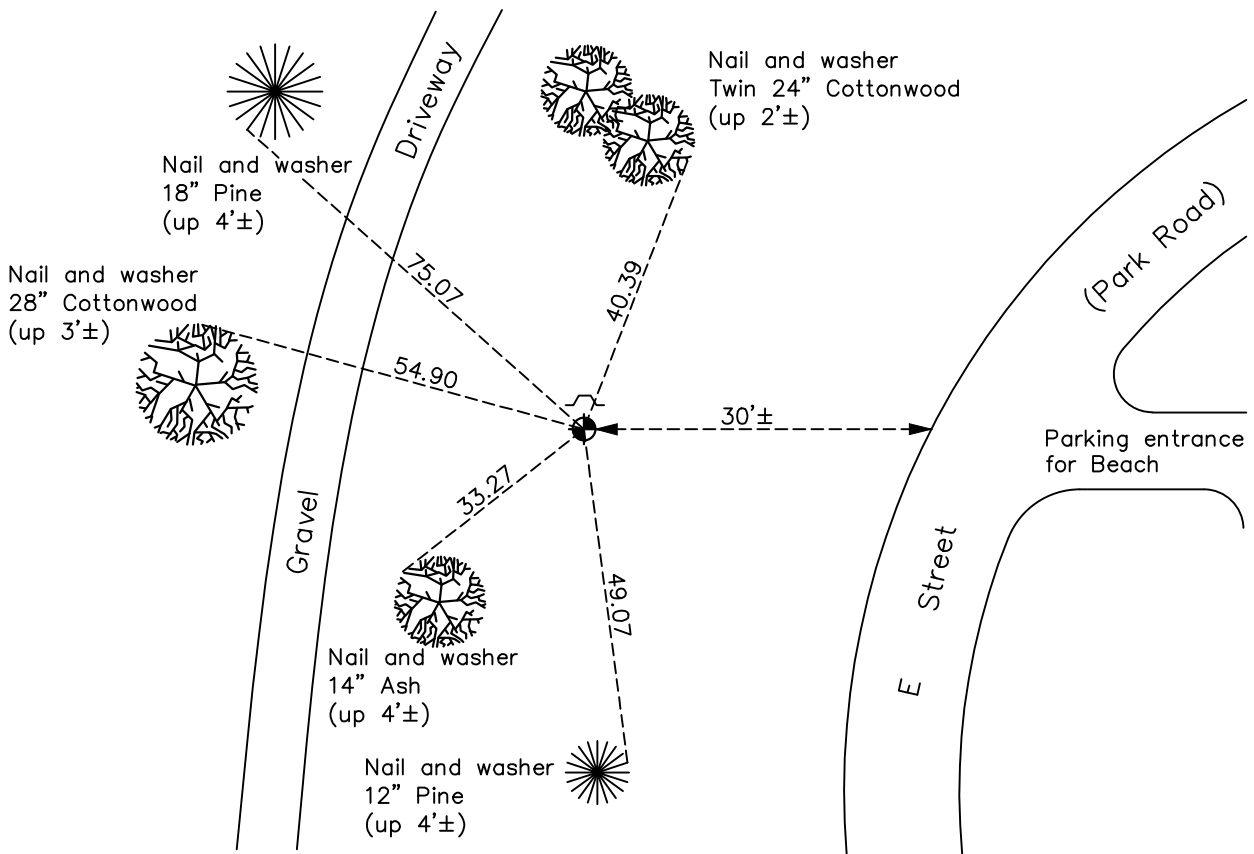
Southwest Corner of Sec. 15 Township 31 Range 22

On the 7th day of January, 1964, the described corner was evidenced by a 3/4" iron pipe

and to perpetuate the location of said corner, at the exact location thereof, a permanent marker was placed consisting of a cast iron monument with a sign and post on the north side

AND on the 20th day of April, 2021, said permanent marker was found flush with the surface and the ties were updated

Updated reference ties are as shown below.



Revision Date
7/29/21

N.A.D. 1983 Coordinates
(1996 Adjustment)

County Project Coordinates	
Northing	<u>148284.7484</u>
Easting	<u>547711.8736</u>
Date	<u>2/13/98</u>

I hereby certify that this United States public land survey monument record is correct and complete to the best of my knowledge and belief.

David M Zieglmeier Date 8/30/21

David Zieglmeier Anoka County Surveyor
Minnesota License Number 46179

HISTORY OF GOVERNMENT CORNER

Page No. 74

County of Anoka

State of Minnesota

Southwest Corner of Sec. 15 Township 31 Range 22

CORNER HISTORY:

January 7, 1964 – Found 3/4” Iron Pipe down 1.5'± from testimony of Farmer. He says a surveyor hired by St. Paul Water Department found it 3 years ago. Established ties to iron pipe and set white steel post fence post 0.5'± south of iron pipe.

July 7, 1965 – Found 3/4” Iron Pipe down 1.0'± and updated ties.

August 7, 1969 – Replaced 3/4” Iron Pipe with Cast Iron Monument flush with the the surface with steel sign post on the south side up 3'±. Updated ties.

June 20, 1973 – Found Cast Iron Monument and updated ties.

May 19, 1977 – Found Cast Iron Monument and updated ties.

August 18, 1980– Found Cast Iron Monument and updated ties.

June 14, 1996 – Found Cast Iron Monument and updated ties.

February 13, 1998 – Found Cast Iron Monument with sign and post on the north side and established NAD 1983 (1996 Adjustment) Anoka County Project Coordinates by Static GPS methods. Updated ties.

September 1, 2010 – Found Cast Iron Monument flush with the surface with sign and post on the north side. Updated ties.

October 14, 2016 – Found Cast Iron Monument flush with the surface with sign and post on the north side. Updated ties.

April 20, 2021 – Found Cast Iron Monument flush with the surface with sign and post on the north side. Verified location of corner by VRS GPS methods. Updated ties.