

CERTIFICATE OF LOCATION OF GOVERNMENT CORNER

County of Anoka

State of Minnesota

Witness Corner of Sec. 21 Township 31 Range 22

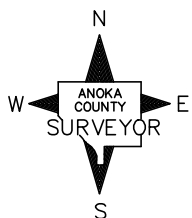
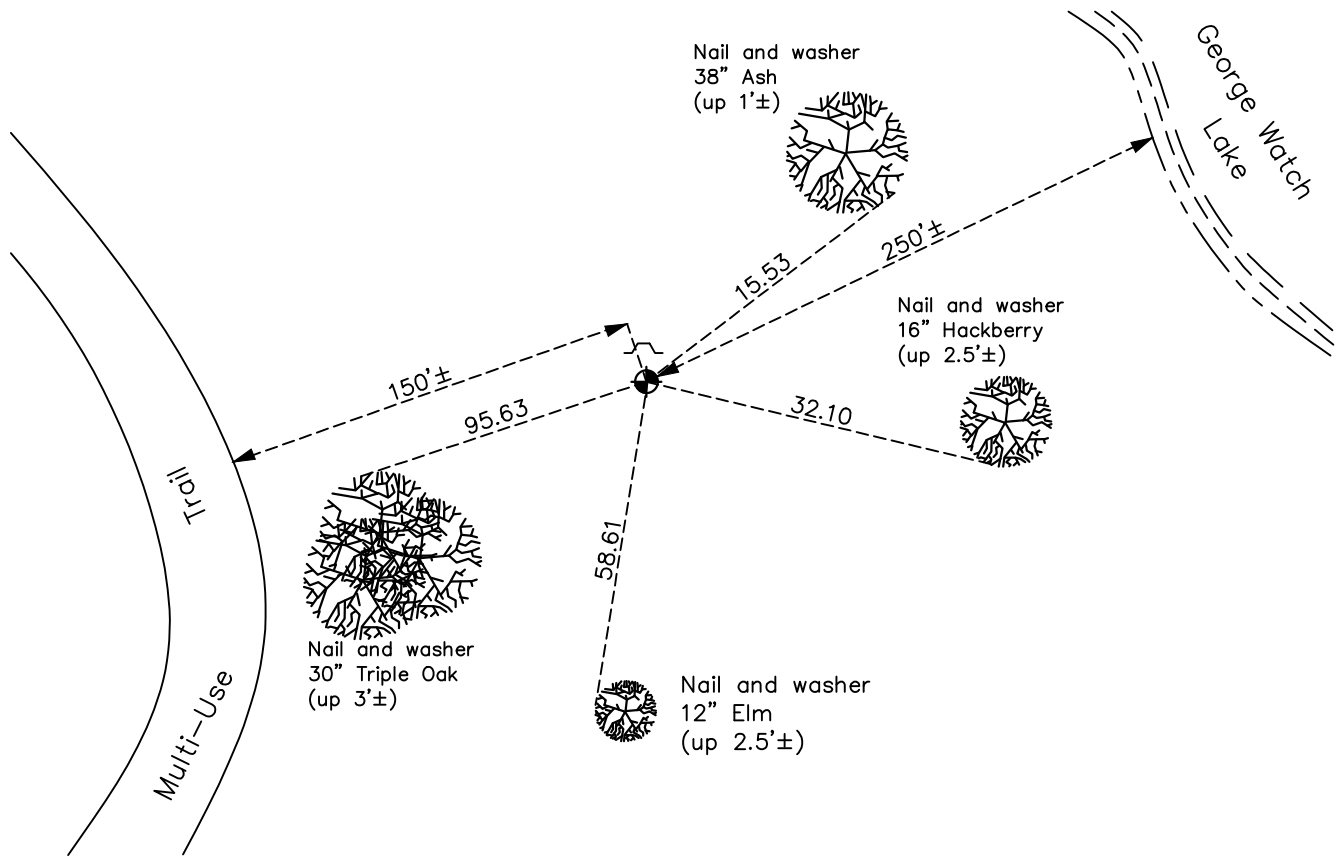
(On north line of section and west side of George Watch Lake)

On the 22nd day of May, 1969, the described corner was evidenced by area resurvey

and to perpetuate the location of said corner, at the exact location thereof, a permanent marker was placed consisting of a cast iron monument with a sign and post on the north side

AND on the 28th day of May, 2021, said permanent marker was found up 0.3'± and the ties were updated

Updated reference ties are as shown below.



Revision Date
7/29/21

N.A.D. 1983 Coordinates
 (1996 Adjustment)

County Project Coordinates	
Northing	<u>148287.3870</u>
Easting	<u>544733.9021</u>
Date	<u>7/29/96</u>

I hereby certify that this United States public land survey monument record is correct and complete to the best of my knowledge and belief.
David M Zieglmeier Date 8/30/21
 David Zieglmeier Anoka County Surveyor
 Minnesota License Number 46179

HISTORY OF GOVERNMENT CORNER

County of Anoka

State of Minnesota

Witness Corner of Sec. 21 Township 31 Range 22
(On north line of section and west side of George Watch Lake)

CORNER HISTORY:

May 22, 1969 – Set Cast Iron Monument flush with the surface using area resurvey.
Set sign and post up 3'±
on north side. Established ties to monument.

June 27, 1973 – Found Cast Iron Monument and updated ties.

July 29, 1986 – Found Cast Iron Monument and updated ties.

October 24, 1991 – Found Cast Iron Monument and updated ties.

July 29, 1996 – Found Cast Iron Monument and established NAD 1983 (1996 Adjustment) Anoka County Project Coordinates by Static GPS methods. Updated ties.

September 8, 2010 – Found Cast Iron Monument up 0.1'± and updated ties.

February 3, 2017 – Found Cast Iron Monument up 0.1'± with a sign and post on the north side and updated ties.

May 28, 2021 – Found Cast Iron Monument up 0.1'± with a sign and post on the north side and updated ties.