

CERTIFICATE OF LOCATION OF GOVERNMENT CORNER

County of Anoka

State of Minnesota

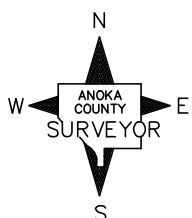
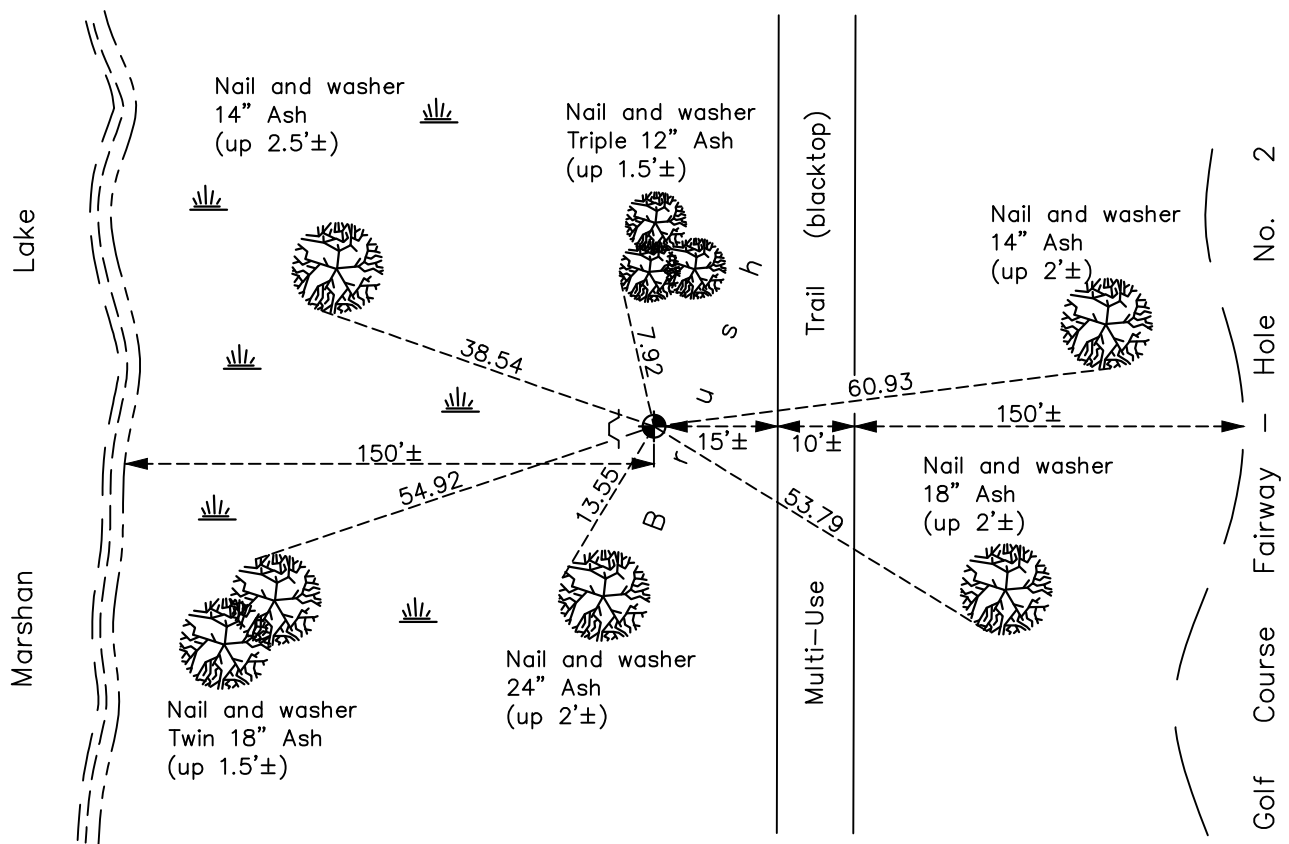
Northwest Corner of Sec. 21 Township 31 Range 22

On the 28th day of March, 1968, the described corner was evidenced by a 2" well point

and to perpetuate the location of said corner, at the exact location thereof, a permanent marker was placed consisting of a cast iron monument with a sign and post on the west side

AND on the 28th day of May, 2021, said permanent marker was found down 0.1'± and the ties were updated

Updated reference ties are as shown below.



Revision Date
7/29/21

N.A.D. 1983 Coordinates
(1996 Adjustment)

County Project Coordinates	
Northing	<u>148289.3857</u>
Easting	<u>542446.9812</u>
Date	<u>4/22/98</u>

I hereby certify that this United States public land survey monument record is correct and complete to the best of my knowledge and belief.

David M Zieglmeier Date 8/30/21

David Zieglmeier Anoka County Surveyor
Minnesota License Number 46179

HISTORY OF GOVERNMENT CORNER

Page No. 77

County of Anoka

State of Minnesota

Northwest Corner of Sec. 21 Township 31 Range 22

CORNER HISTORY:

March 28, 1968 – Found 2” well point and used for area resurvey. Replaced well point with red and white iron pipe set up $3.5' \pm$. Could not tie.

January 6, 1978 – Found red and white iron pipe up $3' \pm$ and updated ties.

August 15, 1980 – Found red and white iron pipe and updated ties.

October 3, 1989 – Replaced red and white iron pipe with a cast iron monument set flush with the surface. Set sign and post on the west side. Updated ties.

October 23, 1991 – Found cast iron monument and updated ties.

April 22, 1998 – Found cast iron monument and established NAD 1983 (1996 Adjustment) Anoka County Project Coordinates by Static GPS methods. Updated ties.

September 8, 2010 – Found cast iron monument flush with the surface and updated ties.

February 3, 2017 – Found cast iron monument down $0.2' \pm$ with a sign and post on the west side and updated ties.

May 28, 2021 – Found cast iron monument down $0.1' \pm$ with a sign and post on the west side, verified location of corner by VRS GPS methods and updated ties.