

CERTIFICATE OF LOCATION OF GOVERNMENT CORNER

County of Anoka

State of Minnesota

Witness Corner of Sec. 20 Township 31 Range 22

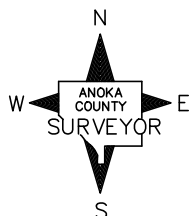
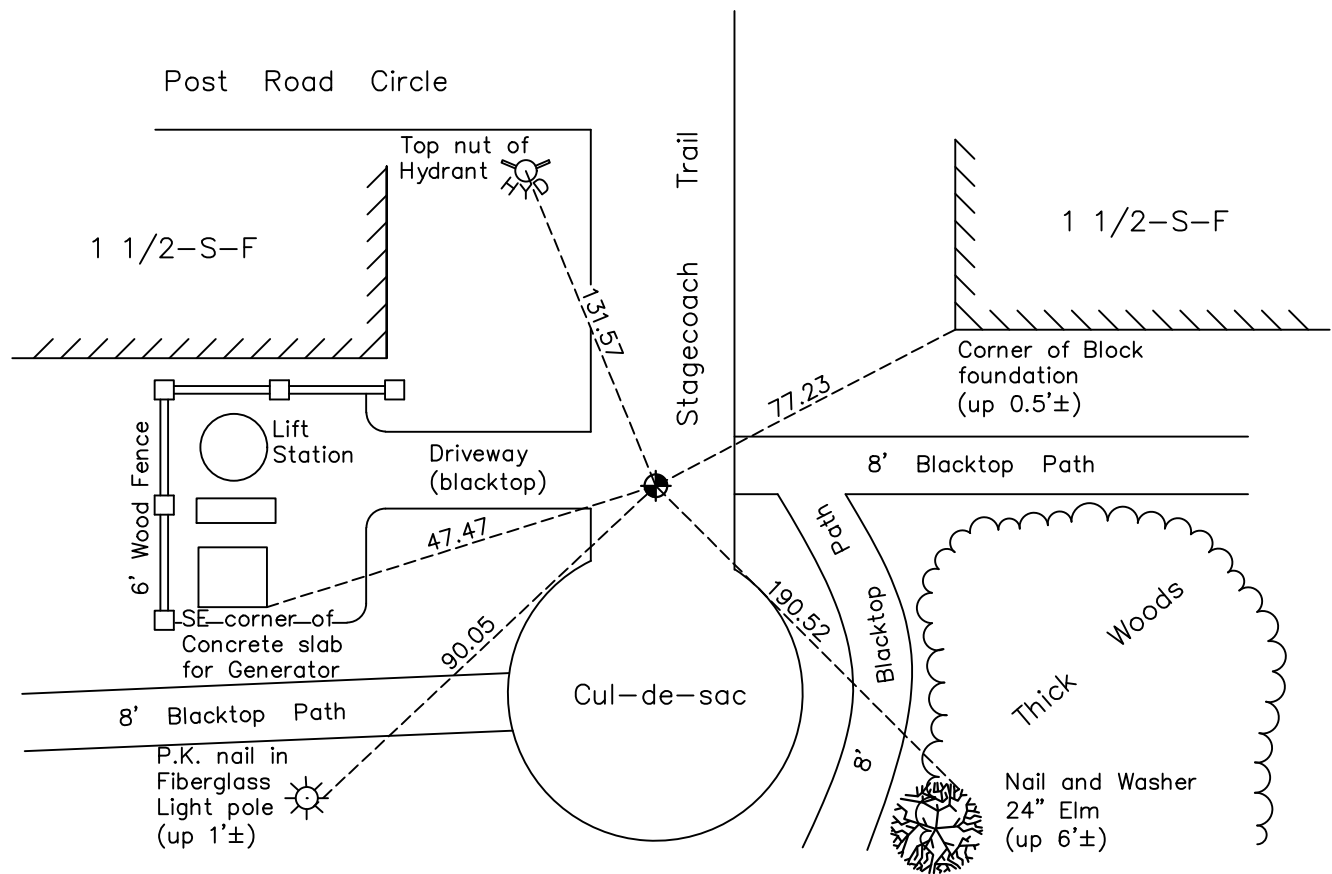
(On north line of NW1/4)

On the 14th day of May, 1963, the described corner was evidenced by a concrete monument

and to perpetuate the location of said corner, at the exact location thereof, a permanent marker was placed consisting of a cast iron monument

AND on the 7th day of June, 2023, said permanent marker was reset 8" CIM in Concrete after road construction, verified position by ACS RTK method and updated ties after setting

Updated reference ties are as shown below.



Revision Date
6/08/2023

N.A.D. 1983 Coordinates
 (1996 Adjustment)

County Project Coordinates	
Northing	148303.1399
Easting	538359.1993
Date	1/28/98

I hereby certify that this United States public land survey monument record is correct and complete to the best of my knowledge and belief.

David Zieglermeier Date 6/28/23

David M. Zieglermeier, Anoka County Surveyor
 Minnesota License Number 46179

HISTORY OF GOVERNMENT CORNER

Page No. 79

County of Anoka

State of Minnesota

Witness Corner of Sec. 20 Township 31 Range 22
(On north line of NW1/4)

CORNER HISTORY:

December 30, 1944 – Carwright found Concrete Monument on west side of the lake. Established ties to monument.

May 14, 1963 – Found Concrete Monument 0.1'± under water and updated ties.

June 14, 1965 – Found Concrete Monument under water. Unable to update ties.

August 14, 1969 – Too wet to update ties.

January 15, 1974 – Found Concrete Monument and updated ties.

January 4, 1978 – Found Concrete Monument with a sign and post on the north side and updated ties.

February 27, 1990 – Set 1/2" Iron Pipe in new position on high ground. Concrete monument is in wetland. Set sign and post on north side of iron pipe.

October 15, 1992 – Found 1/2" Iron Pipe and updated ties.

May 1, 1996 – Set P.K. nail in new location and updated ties. Previous location was disturbed by park trail.

May 9, 1997 – Replaced P.K. nail with a Cast Iron Monument after road construction. Witness Corner was moved to the street. Updated ties.

January 28, 1998 – Found Cast Iron Monument and established NAD 1983 (1996 Adjustment) Anoka County Project Coordinates by Static GPS methods. Updated ties.

July 26, 2010 – Found Cast Iron Monument flush with the surface and updated ties.

November 14, 2016 – Found Cast Iron Monument flush with the surface. Verified location of corner by VRS GPS methods. Updated ties.

May 5, 2021 – Verified position using VRS GPS method, updated ties, removed CIM.

June 7, 2023 – Reset w/ 8" CIM set in concrete after road construction. Verified position with ACS RTK GPS method and updated ties after setting. Job #23-100