

CERTIFICATE OF LOCATION OF GOVERNMENT CORNER

County of Anoka

State of Minnesota

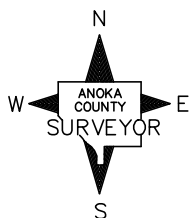
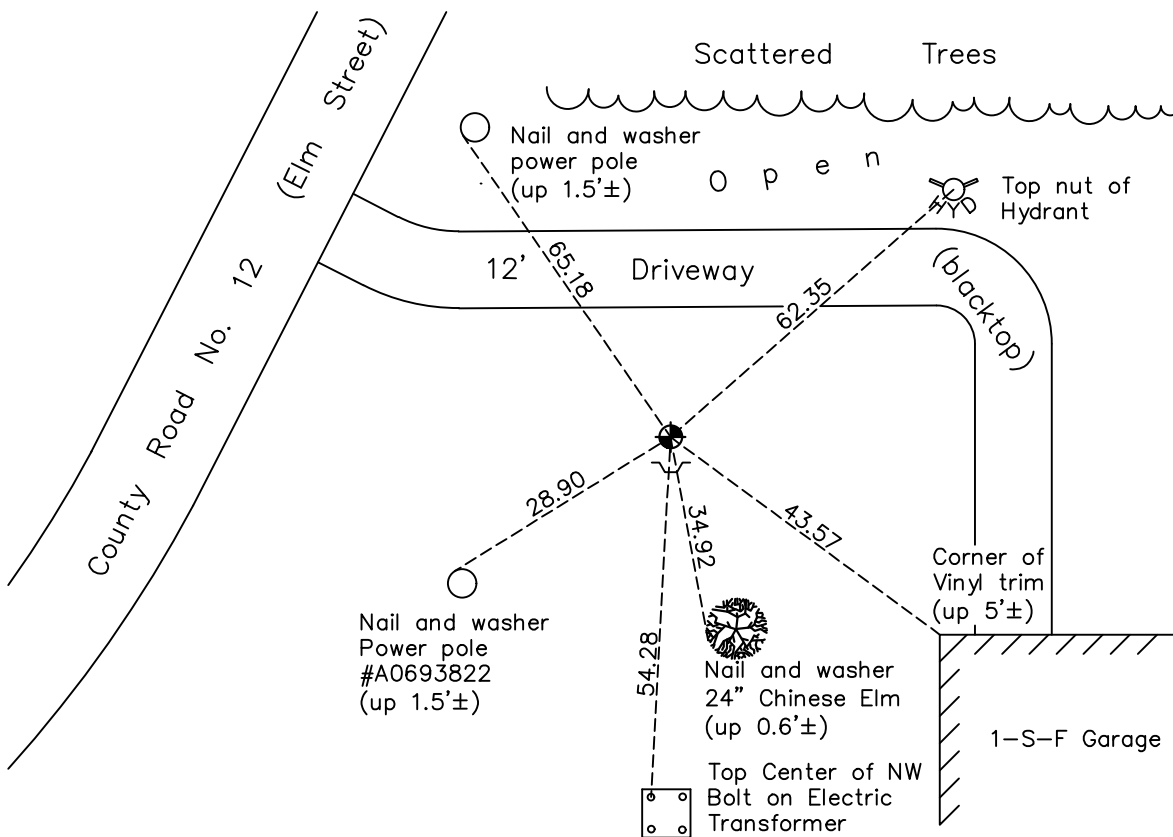
Northeast Corner of Sec. 19 Township 31 Range 22

On the 6th day of April, 1962, the described corner was evidenced by a 1" pinched iron pipe

and to perpetuate the location of said corner, at the exact location thereof, a permanent marker was placed consisting of a cast iron monument with a sign and post on the south side

AND on the 13th day of May, 2021, said permanent marker was found down 0.4'± and the ties were updated

Updated reference ties are as shown below.



Revision Date
7/29/21

N.A.D. 1983 Coordinates
(1996 Adjustment)

County Project Coordinates	
Northing	<u>148299.4570</u>
Easting	<u>537188.0459</u>
Date	<u>7/29/97</u>

I hereby certify that this United States public land survey monument record is correct and complete to the best of my knowledge and belief.

David M Zieglmeier Date 8/30/21

David Zieglmeier Anoka County Surveyor
Minnesota License Number 46179

HISTORY OF GOVERNMENT CORNER

Page No. 80

County of Anoka

State of Minnesota

Northeast Corner of Sec. 19 Township 31 Range 22

CORNER HISTORY:

Date unknown – M.S.H.D found 1” Pinched Iron Pipe flush with the surface.
Established ties to monument.

March 19, 1958 – Minnesota Highway Department found Iron Pipe flush with the surface and updated ties.

April 6, 1962 – Found 1” Pinched Iron Pipe flush with the surface and updated ties.

June 14, 1965 – Found 1” Pinched Iron Pipe and updated ties.

August 15, 1969 – Replaced 1” Pinched Iron Pipe with a Cast Iron Monument set flush with the surface. Monument is 1'± south of east–west centerline and 2'± west of north–south centerline. Set P.K. Nails 2.00' north and east of monument. Updated ties.

June 19, 1973 – Found Cast Iron Monument and updated ties.

May 23, 1977 – Found Cast Iron Monument and updated ties.

August 7, 1980 – Found Cast Iron Monument and updated ties.

September 30, 1991 – Found Cast Iron Monument and updated ties.

April 9, 1993 – Replaced Cast Iron Monument flush with the surface after road construction and updated ties.

July 29, 1997 – Replaced Cast Iron Monument after road construction and set a sign and post on the south side. Established NAD 1983 (1996 Adjustment) Anoka County Project Coordinates by Static GPS methods and updated ties.

July 26, 2010 – Found Cast Iron Monument down 0.4'± with a sign and post on the south side and updated ties.

November 14, 2016 – Found Cast Iron Monument down 0.4'± with a sign and post on the south side. Verified location of corner by VRS GPS methods. Updated ties.

May 13, 2021 – Found Cast Iron Monument down 0.4'± with a sign and post on the south side. Verified location of corner by VRS GPS methods. Updated ties.