

CERTIFICATE OF LOCATION OF GOVERNMENT CORNER

County of Anoka

State of Minnesota

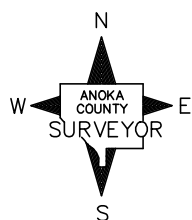
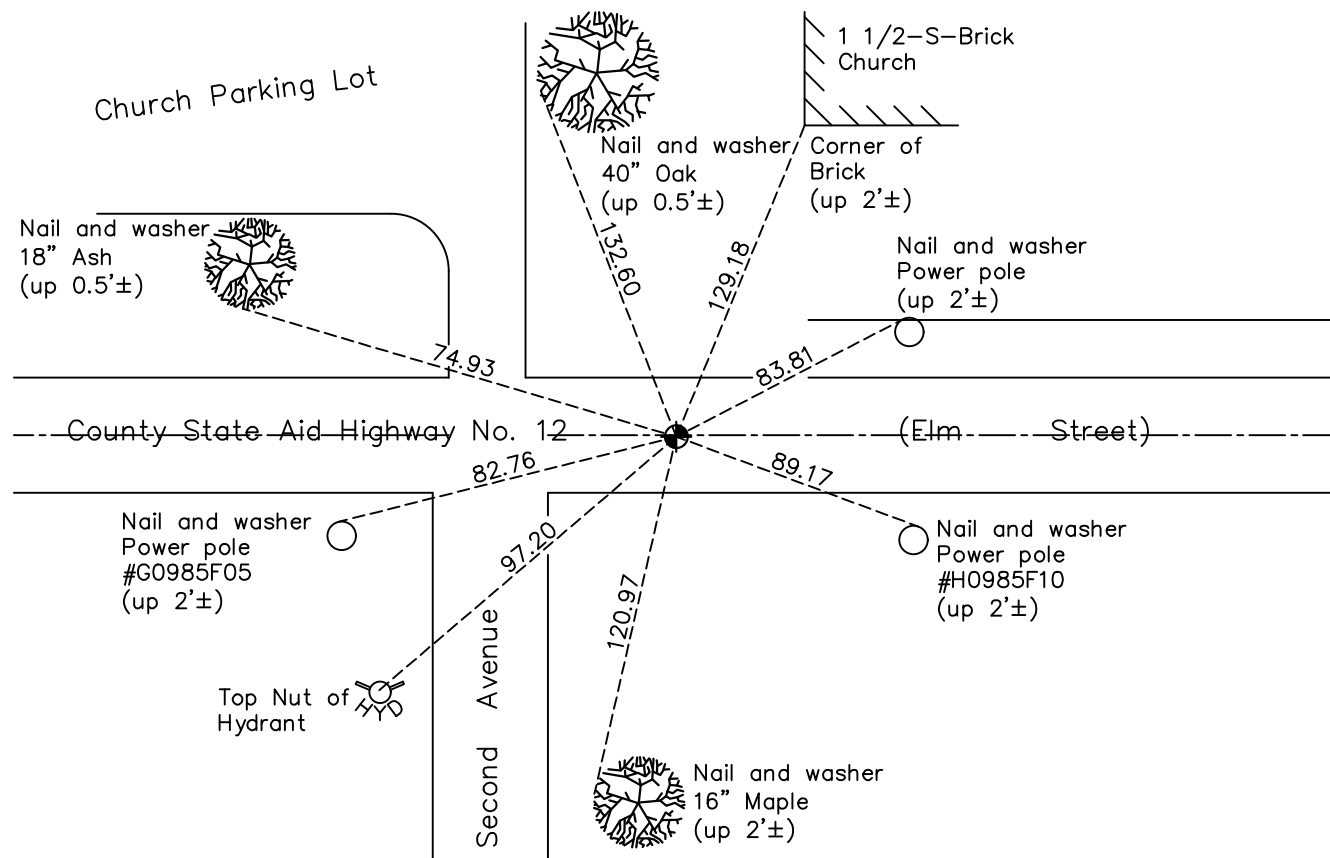
South 1/4 Corner of Sec. 18 Township 31 Range 22

On the 30th day of March, 1960, the described corner was evidenced by a 3/4" iron pipe

and to perpetuate the location of said corner, at the exact location thereof, a permanent marker was placed consisting of a cast iron monument

AND on the 13th day of May, 2021, said permanent marker was found flush with the surface on centerline and the ties were updated

Updated reference ties are as shown below.



Revision Date
7/29/21

N.A.D. 1983 Coordinates
 (1996 Adjustment)

County Project Coordinates	
Northing	148247.3629
Easting	534515.7303
Date	1/26/98

I hereby certify that this United States public land survey monument record is correct and complete to the best of my knowledge and belief.
David M Zieglmeier Date 8/30/21
 David Zieglmeier Anoka County Surveyor
 Minnesota License Number 46179

HISTORY OF GOVERNMENT CORNER

Page No. 81

County of Anoka

State of Minnesota

South 1/4 Corner of Sec. 18 Township 31 Range 22

CORNER HISTORY:

December 27, 1944 – Cartwright found Concrete Monument. Established ties to monument.

February 24, 1958 – G. Hopkins found Concrete Monument and updated ties.

March 30, 1960 – Found 3/4" Iron Pipe that fit old ties well. Dug down 3'± but could not find Concrete Monument. Set Cast Iron Monument flush with the surface and updated ties.

June 15, 1965 – Found Cast Iron Monument and updated ties.

August 14, 1969 – Found Cast Iron Monument and updated ties.

June 19, 1973 – Found Cast Iron Monument and updated ties.

May 24, 1977 – Found Cast Iron Monument and updated ties.

July 16, 1986 – Found Cast Iron Monument and updated ties.

August 30, 1991 – Found Cast Iron Monument and updated ties.

June 13, 1996 – Found Cast Iron Monument and updated ties.

January 26, 1998 – Found Cast Iron Monument and established NAD 1983 (1996 Adjustment) Anoka County Project Coordinates by Static GPS methods. Updated ties.

May 28, 2003 – Set construction ties and removed Cast Iron Monument prior to road construction.

July 14, 2010– Found Cast Iron Monument flush with the surface and updated ties.

November 14, 2016– Found Cast Iron Monument flush with the surface on centerline of road. Verified location of corner by VRS GPS methods and updated ties.

May 13, 2021 – Found Cast Iron Monument flush with the surface on centerline of road. Verified location of corner by VRS GPS methods and updated ties.