

CERTIFICATE OF LOCATION OF GOVERNMENT CORNER

County of Anoka

State of Minnesota

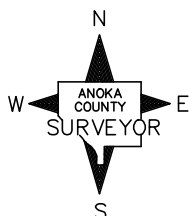
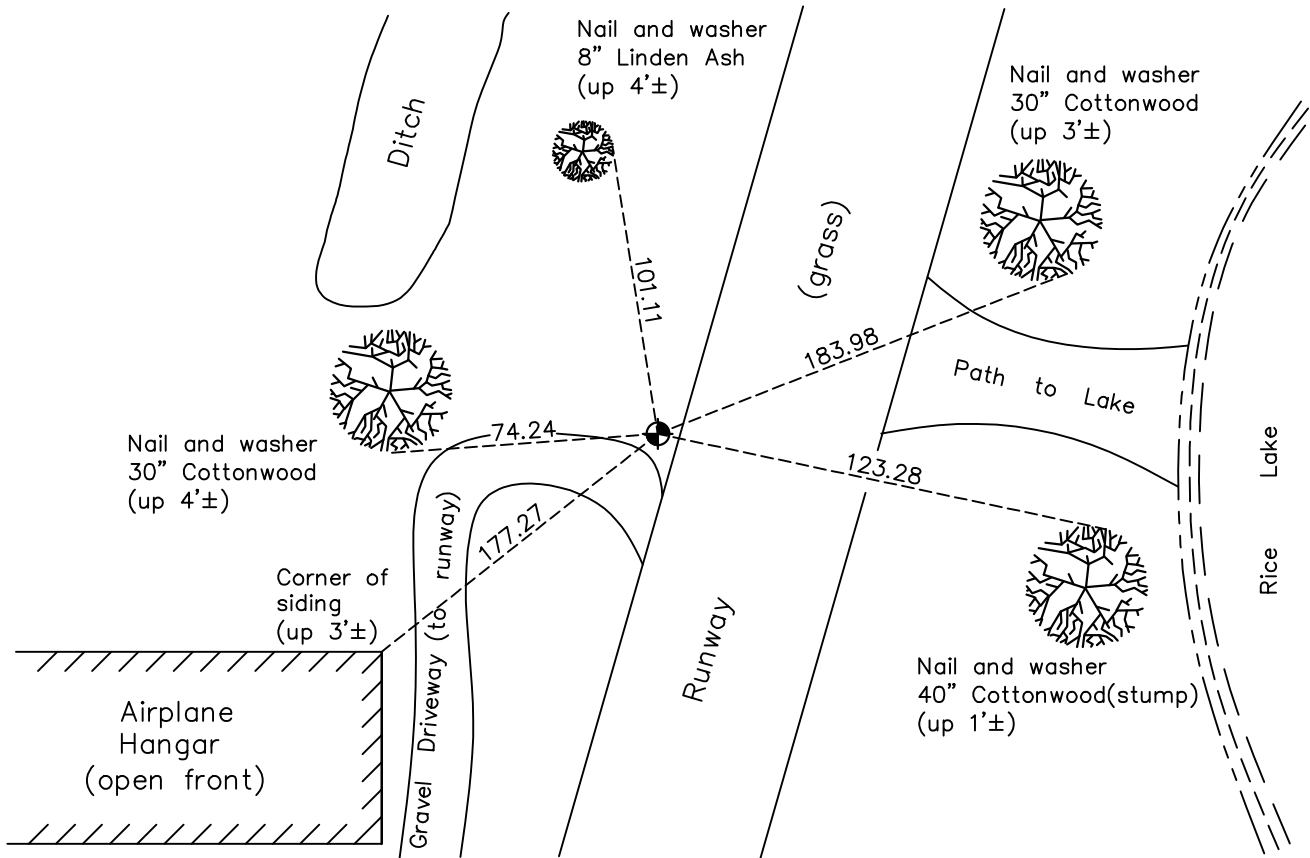
East 1/4 Corner of Sec. 19 Township 31 Range 22

On the 13th day of May, 1963, the described corner was evidenced by a 4" square concrete monument

and to perpetuate the location of said corner, at the exact location thereof, a permanent marker was placed consisting of a cast iron monument flush with the surface and set in concrete

AND on the 18th day of May, 2021, said permanent marker was found down 0.5'± and the ties were updated

Updated reference ties are as shown below.



Revision Date
7/29/21

N.A.D. 1983 Coordinates
(1996 Adjustment)

County Project Coordinates	
Northing	<u>145657.0298</u>
Easting	<u>537205.4932</u>
Date	<u>4/24/98</u>

I hereby certify that this United States public land survey monument record is correct and complete to the best of my knowledge and belief.

David M Zieglmeier Date 8/30/21

David Zieglmeier Anoka County Surveyor
 Minnesota License Number 46179

HISTORY OF GOVERNMENT CORNER

County of Anoka

State of Minnesota

East 1/4 Corner of Sec. 19 Township 31 Range 22

CORNER HISTORY:

December 29, 1944 – Cartwright found Concrete Monument flush with the surface on east and west fence. Established ties to monument.

May 13, 1963 – Found 4" Square Concrete Monument down 20"±. Set Cast Iron Monument flush with the surface on top of concrete monument. Updated ties.

August 18, 1969 – Found Cast Iron Monument and updated ties.

July 3, 1973 – Found Cast Iron Monument and updated ties.

May 24, 1977 – Found Cast Iron Monument and updated ties.

August 25, 1978 – Found Cast Iron Monument down 0.2'± and updated ties.

August 7, 1980 – Found Cast Iron Monument and updated ties.

July 30, 1986 – Found Cast Iron Monument down 0.2'± and updated ties after runway construction.

October 21, 1991 – Found Cast Iron Monument and updated ties.

February 2, 1995 – Found Cast Iron Monument and updated ties.

January 28, 1998 – Found Cast Iron Monument down 1'± and updated ties.

Date unknown – Raised Cast Iron Monument to flush with the surface and set in concrete. Updated ties.

April 24, 1998 – Found Cast Iron Monument flush with the surface and set in concrete and established NAD 1983 (1996 Adjustment) Anoka County Project Coordinates by Static GPS methods. Updated ties.

September 7, 2010 – Found Cast Iron Monument flush with the surface and set in concrete. Updated ties.

January 26, 2017 – Found Cast Iron Monument down 0.5'±. Verified location of corner by VRS GPS methods. Updated ties.

May 18, 2021 – Found Cast Iron Monument down 0.5'±. Verified location of corner by VRS GPS methods. Updated ties.