

CERTIFICATE OF LOCATION OF GOVERNMENT CORNER

County of Anoka

State of Minnesota

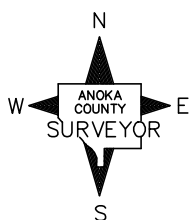
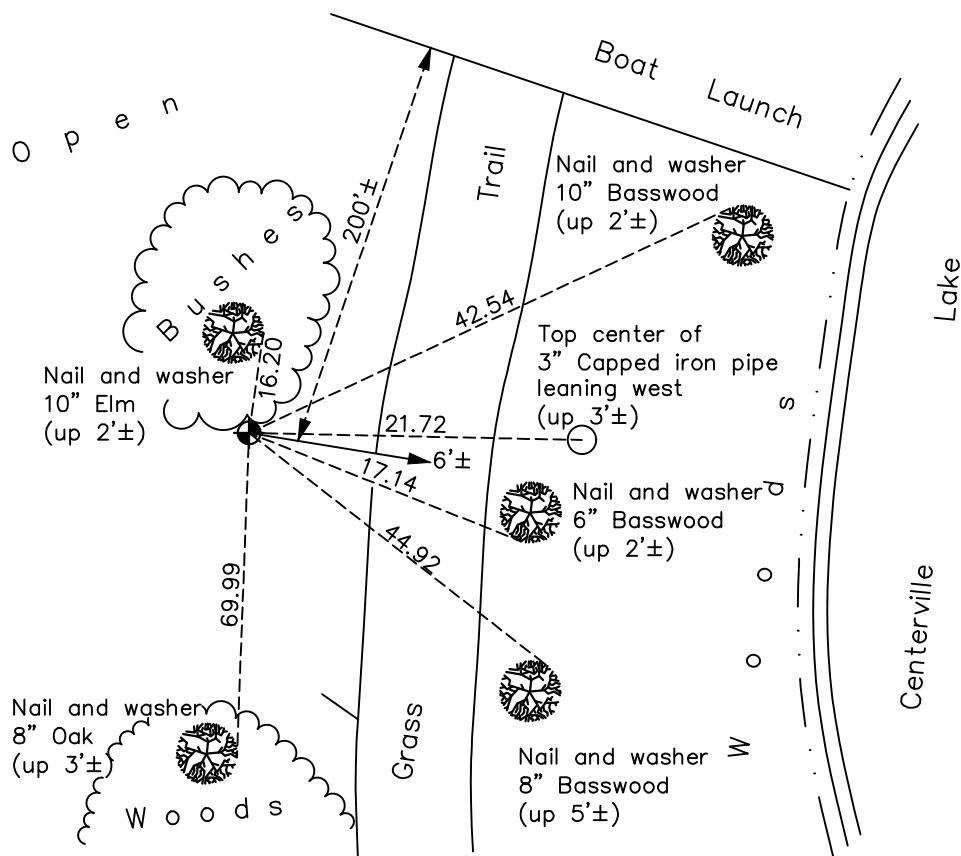
East 1/4 Corner of Sec. 21 Township 31 Range 22

On the 18th day of March, 1968, the described corner was evidenced by area resurvey

and to perpetuate the location of said corner, at the exact location thereof, a permanent marker was placed consisting of a cast iron monument 30'± West of Lake edge

AND on the 7th day of May, 2021, said permanent marker was found down 0.1'± and the ties were updated

Updated reference ties are as shown below.



Revision Date
7/29/21

N.A.D. 1983 Coordinates
(1996 Adjustment)

County Project Coordinates	
Northing	145664.4984
Easting	547724.3508
Date	2/23/98

I hereby certify that this United States public land survey monument record is correct and complete to the best of my knowledge and belief.

David M Zieglmeier Date 8/30/21

David Zieglmeier Anoka County Surveyor
Minnesota License Number 46179

HISTORY OF GOVERNMENT CORNER

Page No. 87

County of Anoka

State of Minnesota

East 1/4 Corner of Sec. 21 Township 31 Range 22

CORNER HISTORY:

Date unknown – Carley found 1” Axle Shaft and established ties to monument.

March 18, 1968 – Set Cast Iron Monument down 0.4'± using area resurvey. Established ties to monument.

June 28, 1973 – Found Cast Iron Monument and updated ties.

May 24, 1977 – Found Cast Iron Monument and updated ties.

August 19, 1980 – Found Cast Iron Monument and updated ties.

July 25, 1986 – Found Cast Iron Monument and updated ties.

October 23, 1991 – Found Cast Iron Monument and updated ties. Set sign and post on the west side of monument.

June 14, 1996 – Found Cast Iron Monument and updated ties.

February 23, 1998 – Found Cast Iron Monument and established NAD 1983 (1996 Adjustment) Anoka County Project Coordinates by Static GPS methods. Updated ties.

August 24, 2010 – Found Cast Iron Monument down 0.1'± with a sign and post on the west side. Updated ties.

November 21, 2016 – Found Cast Iron Monument down 0.1'± with sign and post missing. Updated ties.

May 7, 2021 – Found Cast Iron Monument down 0.1'± with sign and post missing. Updated ties.