

CERTIFICATE OF LOCATION OF GOVERNMENT CORNER

County of Anoka

State of Minnesota

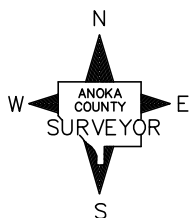
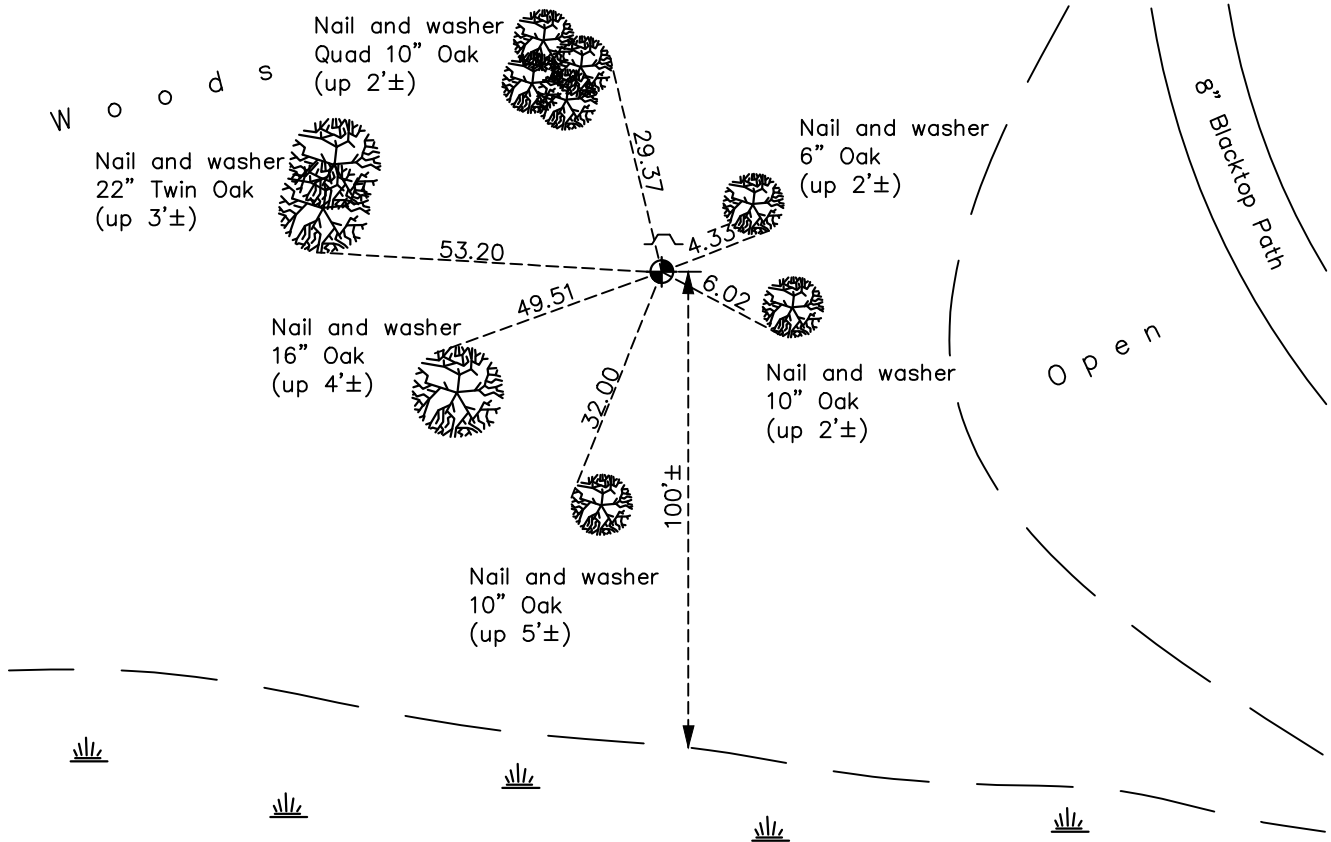
Witness Corner of Sec. 21 Township 31 Range 22
(on east line of section and north side of Ward Lake)

On the 26th day of March, 1968, the described corner was evidenced by area resurvey

and to perpetuate the location of said corner, at the exact location thereof, a permanent marker was placed consisting of a cast iron monument with a sign and post on the north side

AND on the 11th day of May, 2021, said permanent marker was found flush with the surface and with a sign and post on the north side. Updated ties.

Updated reference ties are as shown below.



Revision Date
7/29/21

N.A.D. 1983 Coordinates
 (1996 Adjustment)

County Project Coordinates	
Northing	<u>143880.5096</u>
Easting	<u>547735.3639</u>
Date	<u>3/05/98</u>

I hereby certify that this United States public land survey monument record is correct and complete to the best of my knowledge and belief.
David M Zieglmeier Date 8/30/21
 David Zieglmeier Anoka County Surveyor
 Minnesota License Number 46179

HISTORY OF GOVERNMENT CORNER

Page No. 88

County of Anoka

State of Minnesota

Witness Corner of Sec. 21 Township 31 Range 22
(on east line of section and north side of Ward Lake)

CORNER HISTORY:

March 26, 1968 – Set Cast Iron Monument flush with the surface using area resurvey and set steel post $1/2' \pm$ North of monument and up $3' \pm$. Established ties to monument

July 19, 1973 – Found Cast Iron Monument and updated ties.

June 7, 1977 – Found Cast Iron Monument and updated ties.

August 19, 1980 – Found Cast Iron Monument and updated ties.

October 23, 1991 – Found Cast Iron Monument and updated ties.

July 29, 1996 – Found Cast Iron Monument and updated ties.

March 5, 1998 – Found Cast Iron Monument and established NAD 1983 (1996 Adjustment) Anoka County Project Coordinates by Static GPS methods. Updated ties.

August 18, 2010 – Found Cast Iron Monument flush with the surface with a sign and post on the north side. Updated ties.

December 9, 2016 – Found Cast Iron Monument flush with the surface with a sign and post on the north side. Updated ties.

May 11, 2021 – Found Cast Iron Monument flush with the surface with a sign and post on the north side. Updated ties.