

CERTIFICATE OF LOCATION OF GOVERNMENT CORNER

County of Anoka

State of Minnesota

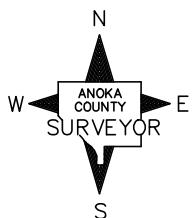
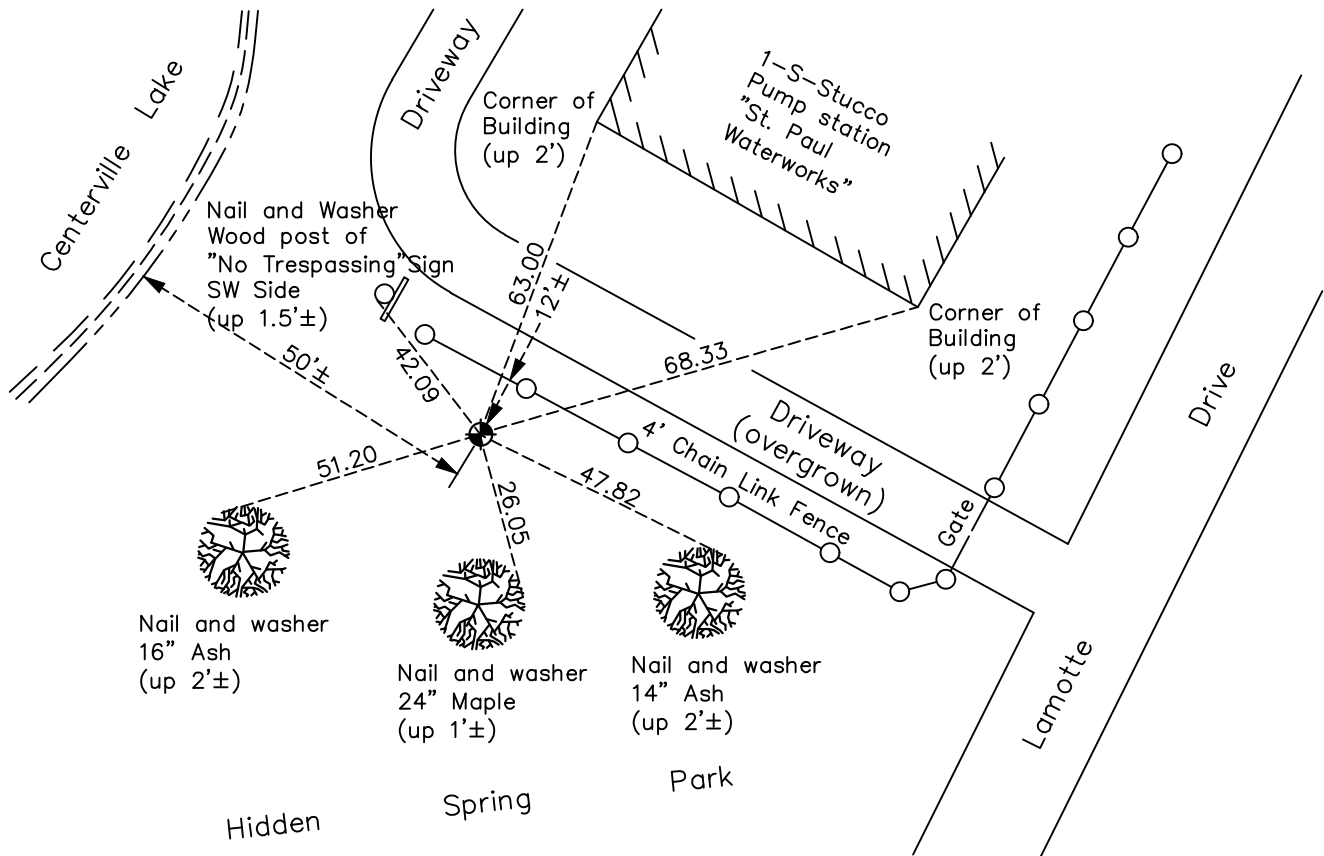
West 1/4 Corner of Sec. 23 Township 31 Range 22

On the 15th day of May, 1963, the described corner was evidenced by a Ramsey County granite monument

and to perpetuate the location of said corner, at the exact location thereof, a permanent marker was placed consisting of a cast iron monument on top of granite monument

AND on the 3rd day of May, 2021, said permanent marker was found down 0.1'± and the ties were updated.

Updated reference ties are as shown below.



Revision Date
7/29/21

N.A.D. 1983 Coordinates
(1996 Adjustment)

| County Project Coordinates | |
|----------------------------|-------------|
| Northing | 145688.5368 |
| Easting | 552992.0843 |
| Date | 4/02/98 |

I hereby certify that this United States public land survey monument record is correct and complete to the best of my knowledge and belief.

David M Zieglmeier Date 8/30/21

David Zieglmeier Anoka County Surveyor
Minnesota License Number 46179

HISTORY OF GOVERNMENT CORNER

Page No. 89

County of Anoka

State of Minnesota

West 1/4 Corner of Sec. 23 Township 31 Range 22

CORNER HISTORY:

April 20, 1948 – Cartwright found Concrete Monument. Established ties to monument.

May 14, 1963 – Found 1 1/2” Iron Pipe. Will verify location at a later date.

May 15, 1963 – Found Ramsey County Granite Monument with drill hole in center. Location checks with monuments marking corners of St. Paul Waterworks Department property. Set Cast Iron Monument over granite . Lowered 1 1/2” Iron Pipe found 0.26’ west and 1.35’ north of monument. Updated ties.

July 9, 1965 – Found Cast Iron Monument and updated ties.

September 5, 1969 – Found Cast Iron Monument and updated ties.

July 9, 1973 – Found Cast Iron Monument and updated ties.

May 24, 1977 – Found Cast Iron Monument and updated ties.

July 31, 1980 – Found Cast Iron Monument and updated ties.

July 24, 1986 – Found Cast Iron Monument and updated ties.

October 28, 1991 – Found Cast Iron Monument and updated ties.

July 10, 1996 – Found Cast Iron Monument and updated ties.

April 2, 1998 – Replaced Cast Iron Monument and set steel post on the south side. Established NAD 1983 (1996 Adjustment) Anoka County Project Coordinates by Static GPS methods and updated ties.

August 2010 – Found Cast Iron Monument flush with the surface. Sign and post was not found. Updated ties.

December 9, 2016 – Found Cast Iron Monument flush with the surface. Verified location of corner by VRS GPS methods and updated ties.

May 3, 2021 – Found Cast Iron Monument down 0.1’±. Verified location of corner by VRS GPS methods and updated ties.