

CERTIFICATE OF LOCATION OF GOVERNMENT CORNER

County of Anoka

State of Minnesota

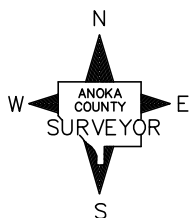
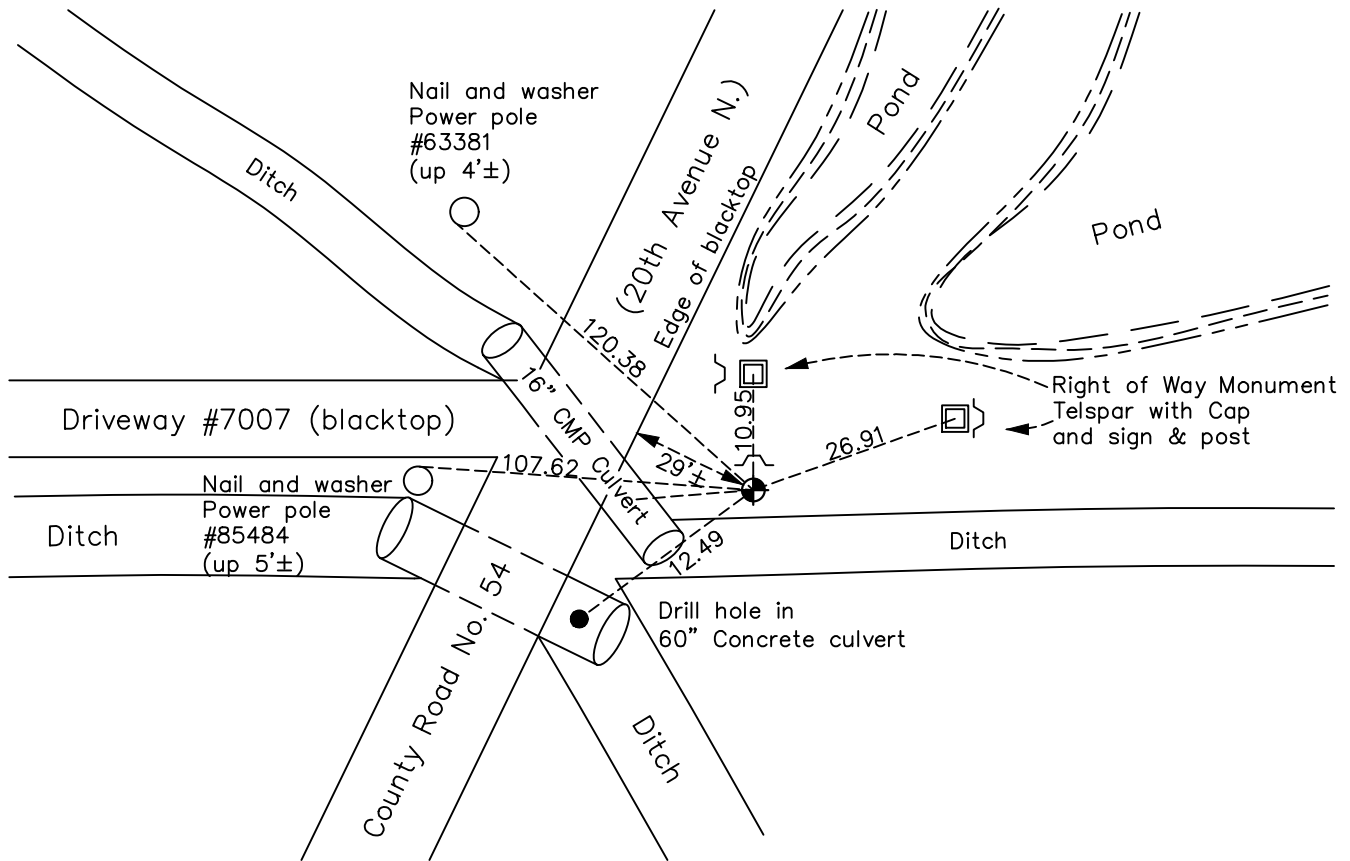
East 1/4 Corner of Sec. 23 Township 31 Range 22

On the 26th day of September, 1972, the described corner was evidenced by a concrete monument

and to perpetuate the location of said corner, at the exact location thereof, a permanent marker was placed consisting of a cast iron monument with a sign and post on the north side

AND on the 3rd day of May, 2021, said permanent marker was found down 0.1'± with a sign and post on the north side and the ties were updated.

Updated reference ties are as shown below.



Revision Date
7/29/21

N.A.D. 1983 Coordinates
(1996 Adjustment)

| County Project Coordinates | |
|----------------------------|-------------|
| Northing | 145644.2390 |
| Easting | 558271.9383 |
| Date | 2/03/98 |

I hereby certify that this United States public land survey monument record is correct and complete to the best of my knowledge and belief.

David M Zieglmeier Date 8/30/21

David Zieglmeier Anoka County Surveyor
 Minnesota License Number 46179

HISTORY OF GOVERNMENT CORNER

County of Anoka

State of Minnesota

East 1/4 Corner of Sec. 23 Township 31 Range 22

CORNER HISTORY:

April 20, 1948 – Cartwright found Concrete Monument up 0.7'±. Established ties to monument.

October 1959 – Found Concrete Monument and updated ties.

September 5, 1969 – Found Concrete Monument up 0.4'± and updated ties.

September 26, 1972 – Found Concrete Monument and steel post. Updated ties.

August 18, 1976 – Replaced Concrete Monument with a Cast Iron Monument. Steel post on the east side and updated ties.

August 30, 1991 – Found Cast Iron Monument and updated ties.

September 9, 1994 – Set construction ties and removed Cast Iron Monument prior to road construction.

October 26, 1994 – Set Cast Iron Monument after ditch construction using construction ties and updated ties. Set a sign and post on the north side of monument.

June 24, 1996 – Found Cast Iron Monument and updated ties.

February 3, 1998 – Found Cast Iron Monument and established NAD 1983 (1996 Adjustment) Anoka County Project Coordinates by Static GPS methods. Updated ties.

September 16, 2010 – Found Cast Iron Monument down 0.1'± with a sign and post on the north side. Updated ties.

January 3, 2017 – Found Cast Iron Monument down 0.1'± with a sign and post on the north side. Updated ties.

May 3, 2021 – Found Cast Iron Monument down 0.1'± with a sign and post on the north side. Updated ties.