

CERTIFICATE OF LOCATION OF GOVERNMENT CORNER

County of Anoka

State of Minnesota

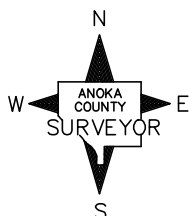
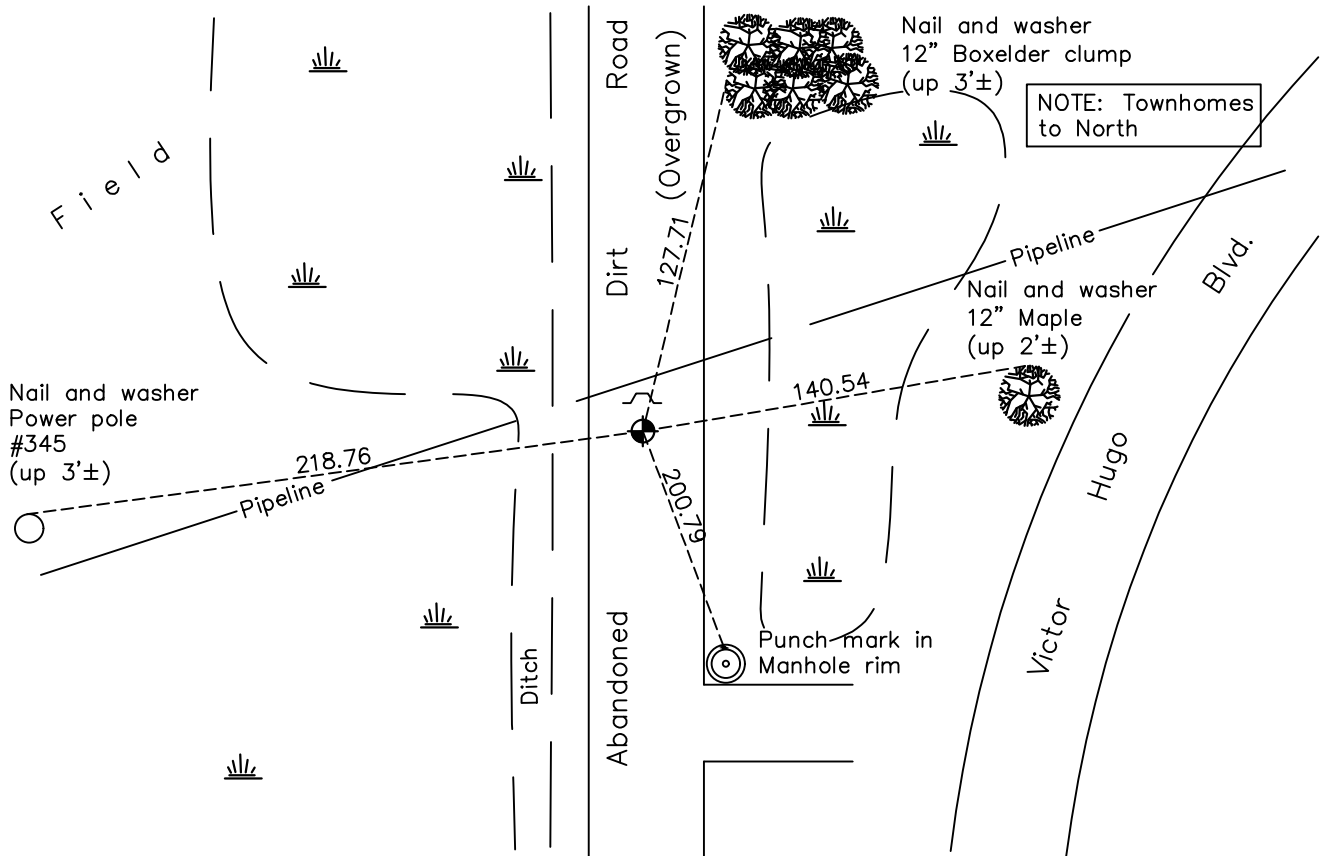
East 1/4 Corner of Sec. 24 Township 31 Range 22

On the 4th day of September, 1968, the described corner was evidenced by a 1" iron pipe

and to perpetuate the location of said corner, at the exact location thereof, a permanent marker was placed consisting of a cast iron monument 2'± west of centerline and 0.5'± below surface

AND on the 22nd day of April, 2021, said permanent marker was found flush with the surface with a sign and post on north side. Ties were updated.

Updated reference ties are as shown below.



Revision Date
7/29/21

N.A.D. 1983 Coordinates
 (1996 Adjustment)

County Project Coordinates	
Northing	<u>145742.6851</u>
Easting	<u>563550.5722</u>
Date	<u>4/03/98</u>

I hereby certify that this United States public land survey monument record is correct and complete to the best of my knowledge and belief.

David M Zieglmeier Date 8/30/21

David Zieglmeier Anoka County Surveyor
 Minnesota License Number 46179

HISTORY OF GOVERNMENT CORNER

County of Anoka

State of Minnesota

East 1/4 Corner of Sec. 24 Township 31 Range 22

CORNER HISTORY:

Date unknown – Found 1” Iron Pipe flush with the surface and with top bent.
Established ties to monument.

September 4, 1968 – Found 3/4” Iron Pipe flush with the surface and updated ties.

September 5, 1968 – Set construction ties.

April 22, 1969 – Set Cast Iron Monument down 0.4'± using construction ties. Updated ties.

June 22, 1973– Found Cast Iron Monument and updated ties.

May 24, 1977– Found Cast Iron Monument and updated ties.

July 28, 1980– Found Cast Iron Monument and updated ties.

August 7, 1992– Updated ties and removed Cast Iron Monument prior to road construction.

September 9, 1992 – Set Cast Iron Monument after road construction using ties.
Updated ties.

July 1, 1996– Found Cast Iron Monument and updated ties.

April 3, 1998– Replaced Cast Iron Monument set down 0.5'± and established NAD 1983 (1996 Adjustment) Anoka County Project Coordinates by Static GPS methods.
Updated ties.

September 14, 2010 – Set sign and post on north side of monument.

May 18, 2011 – Found Cast Iron Monument laying down 1.0'± below surface with a sign and post on the north side. Reset Cast Iron Monument and updated ties.

May 20, 2011 – Found Cast Iron Monument and verified location of corner by VRS GPS methods. Updated ties.

December 29, 2016 – Found Cast Iron Monument flush with the surface with a sign and post on the north side. Updated ties.

April 22, 2021 – Found Cast Iron Monument flush with the surface with a sign and post on the north side. Verified location of corner by VRS GPS methods. Updated ties.