

CERTIFICATE OF LOCATION OF GOVERNMENT CORNER

County of Anoka

State of Minnesota

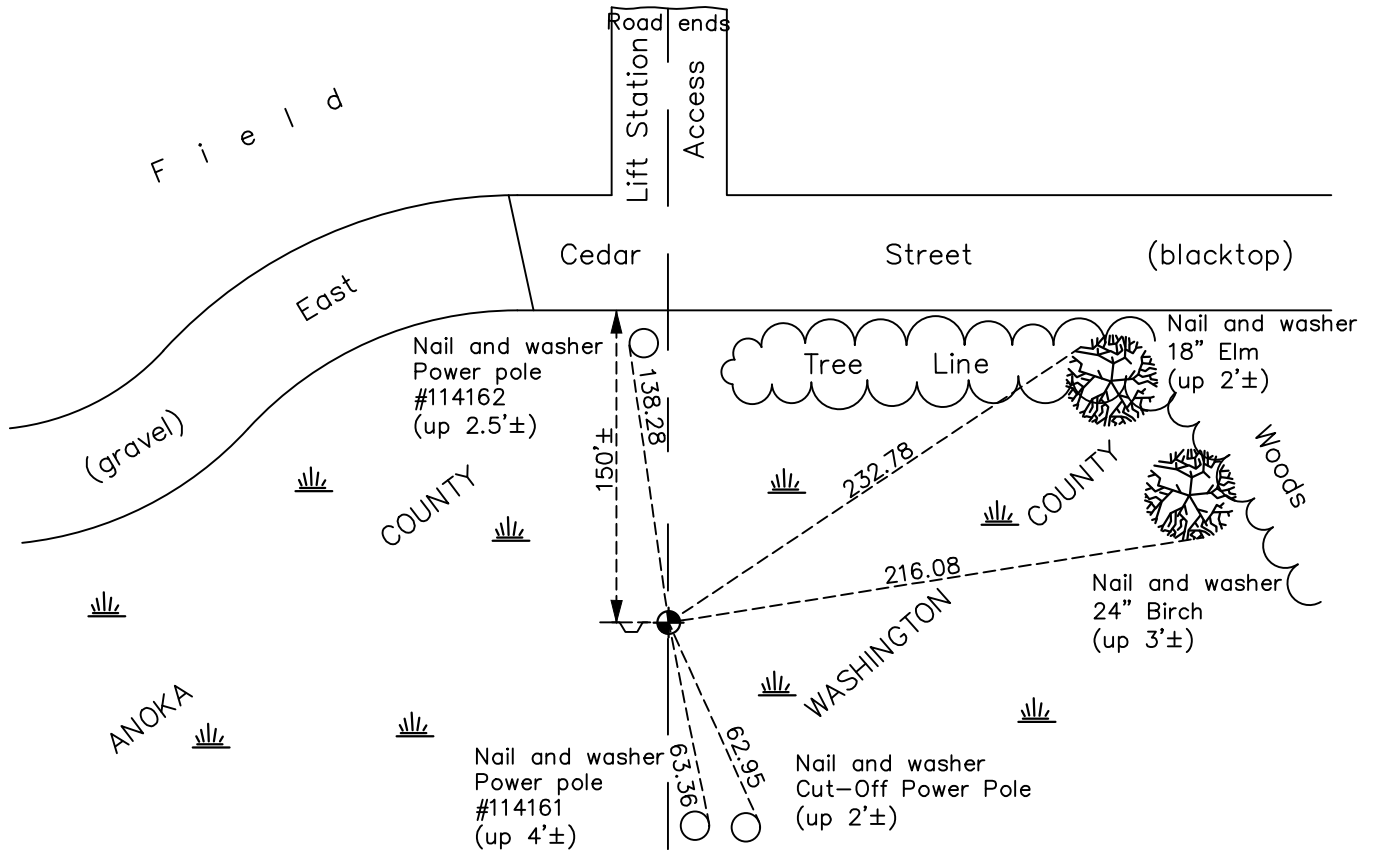
Northeast Corner of Sec. 25 Township 31 Range 22

On the 27th day of January, 2023, the described corner was evidenced by cast iron monument

and to perpetuate the location of said corner, at the exact location thereof, a permanent marker was placed consisting of a 6' square steel Telspar with a cap and punch mark and a Washington County sign and post of the West side

AND on the 27th day of January, 2023, said permanent marker was found and removed CIM, replaced with 6' Telspar set up 1'± with cap and punch mark using County RTK GPS, updated ties

Updated reference ties are as shown below.



Revision Date
1/30/2023

N.A.D. 1983 Coordinates
(1996 Adjustment)

County Project Coordinates	
Northing	<u>143034.1439</u>
Easting	<u>563546.1011</u>
Date	<u>3/25/98</u>

I hereby certify that this United States public land survey monument record is correct and complete to the best of my knowledge and belief.

David Zieglmeier Date 2/28/23

David Zieglmeier Anoka County Surveyor
Minnesota License Number 46179

HISTORY OF GOVERNMENT CORNER

Page No. 92

County of Anoka

State of Minnesota

Northeast Corner of Sec. 25 Township 31 Range 22

CORNER HISTORY:

September 21, 1961 – Found 3" Iron Pipe up 1.0'± in field. Established ties to monument.

July 7, 1965 – Found Iron Pipe and updated ties.

September 5, 1969 – Replaced 3" Iron Pipe with a Cast Iron Monument up 0.2'± with steel sign and post 0.8'± west of corner and up 3.5'±. Updated ties.

June 22, 1973 – Found Cast Iron Monument and updated ties.

May 25, 1977 – Found Cast Iron Monument and updated ties.

August 11, 1980 – Found Cast Iron Monument and updated ties.

September 23, 1991 – Found Cast Iron Monument and updated ties.

June 24, 1996 – Found Cast Iron Monument and updated ties.

March 25, 1998– Found Cast Iron Monument and established NAD 1983 (1996 Adjustment) Anoka County Project Coordinates by Static GPS methods. Updated ties.

September 14, 2010 – Found Cast Iron Monument up 0.4'± with a Washington County sign and post on the west side. Updated ties.

December 29, 2016 – Found Cast Iron Monument up 0.4'± with a Washington County sign and post on the west side. Updated ties.

March 10, 2022 – Found CIM up 0.4'±, verified position by VRS GPS method and updated the ties.

January 27, 2023 – Found and removed CIM, replaced with 6' Telspar set up 1'± with cap and punch mark set using County RTK GPS method. Ties were checked before replacement and updated after replacement of CIM.