

CERTIFICATE OF LOCATION OF GOVERNMENT CORNER

County of Anoka

State of Minnesota

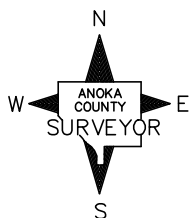
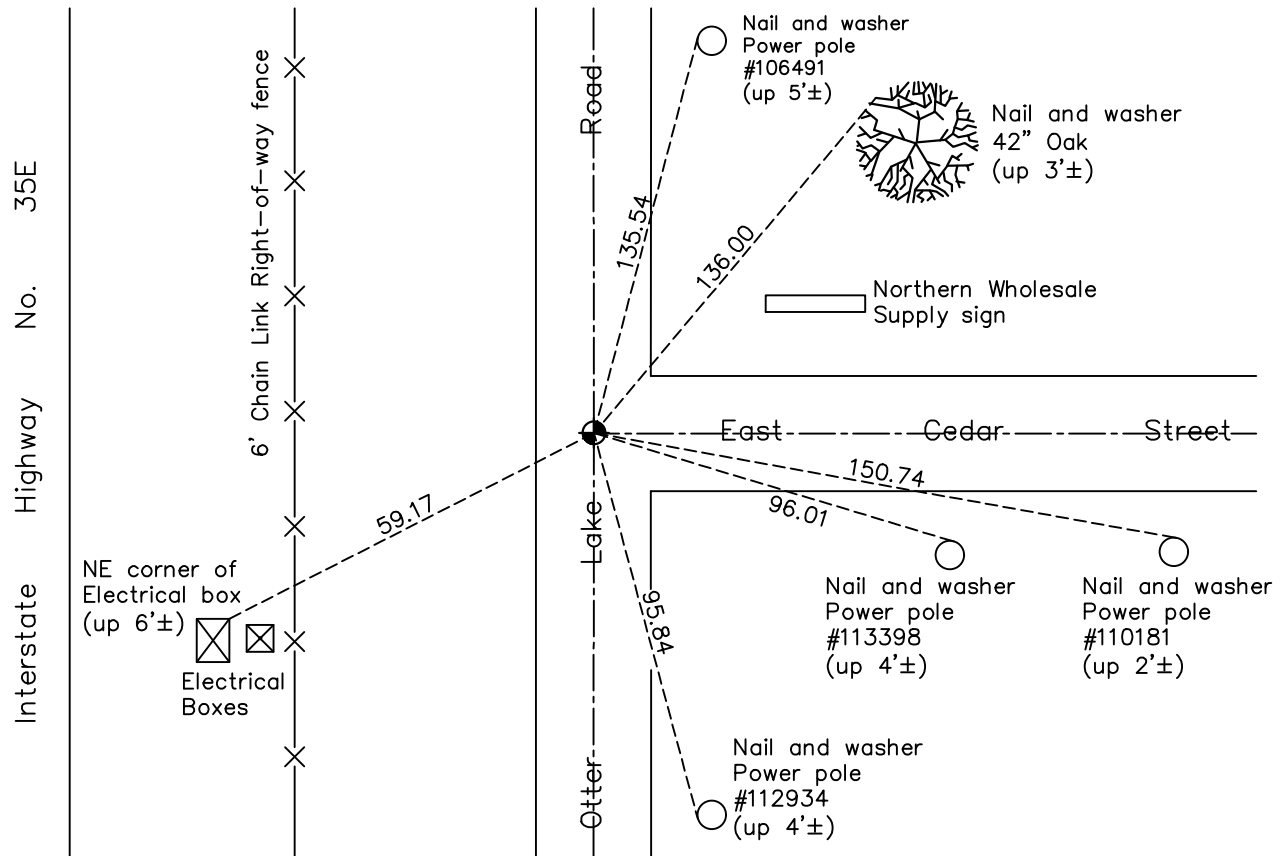
South 1/4 Corner of Sec. 24 Township 31 Range 22

On the 31st day of January, 1977, the described corner was evidenced by a 1/2" iron pipe

and to perpetuate the location of said corner, at the exact location thereof, a permanent marker was placed consisting of a cast iron monument

AND on the 22nd day of April, 2021, said permanent marker was found on
centerline-centerline and the ties were updated

Updated reference ties are as shown below.



N.A.D. 1983 Coordinates
(1996 Adjustment)

County Project Coordinates	
Northing	<u>143059.6778</u>
Easting	<u>560912.3985</u>
Date	<u>7/06/99</u>

Revision Date
7/30/21

I hereby certify that this United States public land survey monument record is correct and complete to the best of my knowledge and belief.

David M Zieglmeier Date 8/30/21

David Zieglmeier Anoka County Surveyor
Minnesota License Number 46179

HISTORY OF GOVERNMENT CORNER

Page No. 93

County of Anoka

State of Minnesota

South 1/4 Corner of Sec. 24 Township 31 Range 22

CORNER HISTORY:

January 31, 1977 – Found 1/2” Iron Pipe flush with the surface. Iron Pipe is 1'± east of centerline and 6'± south of centerline. Established ties to monument.

April 22, 1977 – Replaced Iron Pipe with a Cast Iron Monument and updated ties.

August 18, 1977 – Found Cast Iron Monument and updated ties.

July 28, 1980 – Found Cast Iron Monument and updated ties.

October 17, 1991 – Found Cast Iron Monument and updated ties.

April 29, 1997 – Set Cast Iron Monument after road construction and updated ties.

March 25, 1998 – Found Cast Iron Monument and updated ties.

October 29, 1998 – Set construction ties prior to road construction.

January 29, 1999 – Set 1/2” Iron Pipe as temporary monument after road construction using construction ties. Updated ties.

July 6, 1999 – Replaced 1/2” Iron Pipe with a Cast Iron Monument and established NAD 1983 (1996 Adjustment) Anoka County Project Coordinates by Static GPS methods. Updated ties.

September, 2010 – Found Cast Iron Monument and updated ties.

December 28, 2016 – Found Cast Iron Monument on centerline–centerline and updated ties.

April 22, 2021 – Found Cast Iron Monument on centerline–centerline, Verified location of corner by VRS GPS methods and updated ties.