

CERTIFICATE OF LOCATION OF GOVERNMENT CORNER

County of Anoka

State of Minnesota

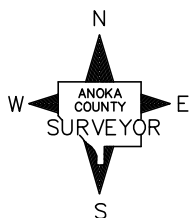
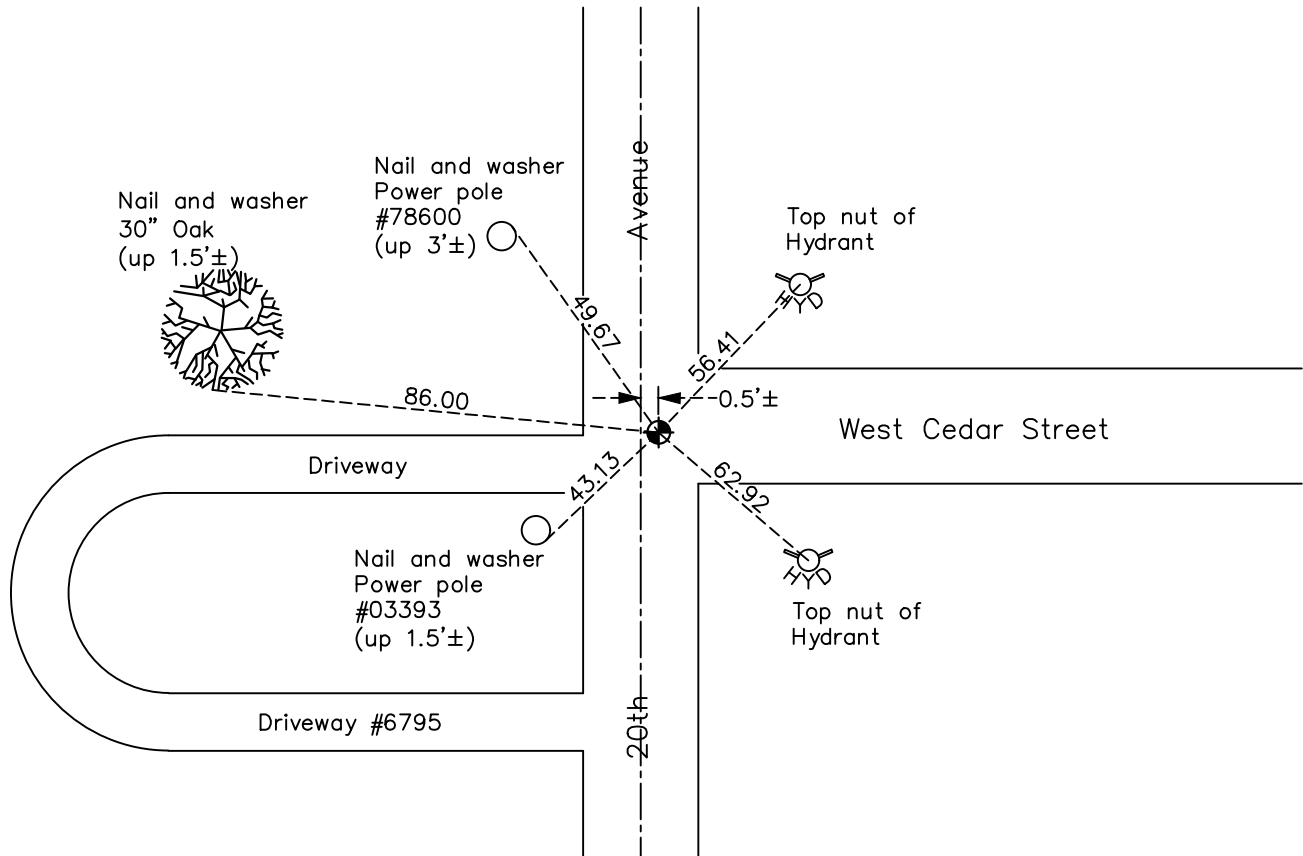
Southeast Corner of Sec. 23 Township 31 Range 22

On the 6th day of April, 1962, the described corner was evidenced by a 4"X6" broken concrete monument

and to perpetuate the location of said corner, at the exact location thereof, a permanent marker was placed consisting of a cast iron monument

AND on the 11th day of May, 2021, said permanent marker was found down 0.05'± and the ties were updated

Updated reference ties are as shown below.



Revision Date
7/30/21

N.A.D. 1983 Coordinates
(1996 Adjustment)

County Project Coordinates	
Northing	<u>142982.7822</u>
Easting	<u>558279.2937</u>
Date	<u>3/25/98</u>

I hereby certify that this United States public land survey monument record is correct and complete to the best of my knowledge and belief.

David M Zieglmeier Date 8/30/21

David Zieglmeier Anoka County Surveyor
Minnesota License Number 46179

HISTORY OF GOVERNMENT CORNER

Page No. 94

County of Anoka

State of Minnesota

Southeast Corner of Sec. 23 Township 31 Range 22

CORNER HISTORY:

April 20, 1948 – Cartwright found Concrete Monument flush with the surface. Established ties to monument.

January 29, 1953 – Anoka County Highway Department found Concrete Monument and updated ties.

April 6, 1962 – Found 4"X6" Concrete Monument down 0.5'± with 1/2" Iron Bolt on the north side. Updated ties.

July 7, 1965 – Found Concrete Monument down 1'± and updated ties.

September 18, 1969 – Set Cast Iron Monument down 0.5'± over top of broken Concrete Monument down 2.7'±. Updated ties.

September 18, 1972 – Found Cast Iron Monument flush with the surface and updated ties.

June 27, 1973 – Found Cast Iron Monument and updated ties.

August 18, 1978 – Found Cast Iron Monument and updated ties.

April 2, 1979 – Raised Cast Iron Monument to flush with the surface and updated ties.

July 28, 1980 – Found Cast Iron Monument and updated ties.

May 25, 1983 – Found Cast Iron Monument and updated ties.

July 7, 1986 – Found Cast Iron Monument and updated ties.

August 27, 1991 – Found Cast Iron Monument and updated ties.

June 24, 1996 – Found Cast Iron Monument and updated ties.

March 25, 1998 – Found Cast Iron Monument and established NAD 1983 (1996 Adjustment) Anoka County Project Coordinates by Static GPS methods. Updated ties.

July 12, 2010 – Found Cast Iron Monument down 0.05'± and updated ties.

December 12, 2016 – Found Cast Iron Monument down 0.05'± and updated ties.

May 11, 2021 – Found Cast Iron Monument down 0.05'±, Verified location of corner by VRS GPS methods and updated ties.