

# CERTIFICATE OF LOCATION OF GOVERNMENT CORNER

County of Anoka

State of Minnesota

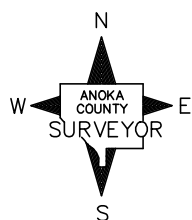
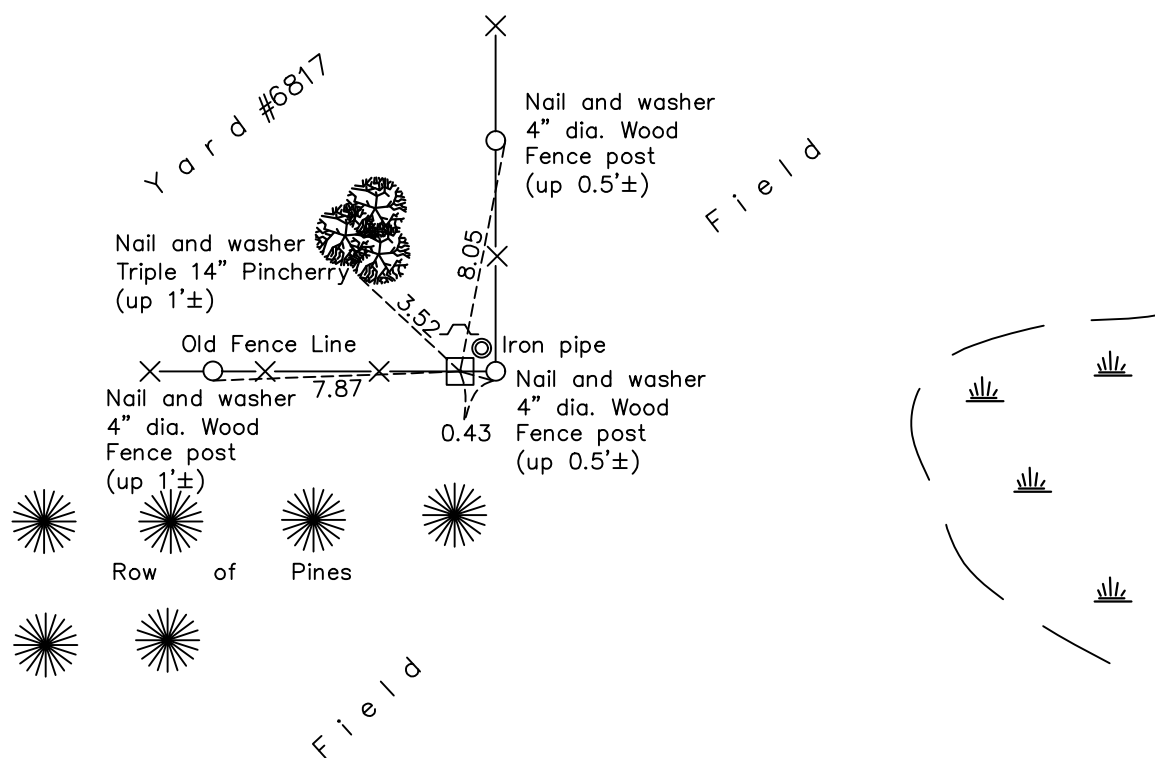
## South 1/4 Corner of Sec. 23 Township 31 Range 22

On the 16th day of May, 1963, the described corner was evidenced by a concrete monument

and to perpetuate the location of said corner, at the exact location thereof, a permanent marker was placed consisting of the same concrete monument with a sign and post on the north side and an iron pipe on the northeast side

AND on the 3rd day of May, 2021, said permanent marker was found flush with the surface with a sign and post on the north side and the ties were updated

Updated reference ties are as shown below.



Revision Date  
7/30/21

N.A.D. 1983 Coordinates  
 (1996 Adjustment)

County Project Coordinates	
Northing	<u>143016.7051</u>
Easting	<u>555637.5408</u>
Date	<u>3/05/98</u>

I hereby certify that this United States public land survey monument record is correct and complete to the best of my knowledge and belief.  
*David M Zieglmeier* Date 8/30/21  
 David Zieglmeier Anoka County Surveyor  
 Minnesota License Number 46179

# HISTORY OF GOVERNMENT CORNER

County of Anoka

State of Minnesota

## South 1/4 Corner of Sec. 23 Township 31 Range 22

### **CORNER HISTORY:**

April 20, 1948 – Cartwright found Concrete Monument up 0.5'± next to corner fence post of fence running north and west. Established ties to monument.

May 16, 1963 – Found 4" square Concrete Monument up 0.5'± and set 3/4" Iron Pipe on north side of monument. Updated ties.

September 5, 1969 – Found Concrete Monument and updated ties.

May 25, 1977 – Found Concrete Monument and updated ties.

August 18, 1980 – Found Concrete Monument and updated ties.

November 9, 1990 – Found Concrete Monument with a sign and post on the north side. Updated ties.

December 21, 1990 – Found Concrete Monument and updated ties.

October 29, 1991 – Found Concrete Monument and updated ties.

March 5, 1998 – Found Concrete Monument with sign and post on the north side and established NAD 1983 (1996 Adjustment) Anoka County Project Coordinates by Static GPS methods. Updated ties.

September 16, 2010 – Found Concrete Monument flush with the surface with a sign and post on the north side and an Iron Pipe on the northeast side. Updated ties.

November 28, 2016 – Found Concrete Monument flush with the surface with a sign and post on the north side. Updated ties.

May 3, 2021 – Found Concrete Monument flush with the surface with a sign and post on the north side. Updated ties.