

CERTIFICATE OF LOCATION OF GOVERNMENT CORNER

County of Anoka

State of Minnesota

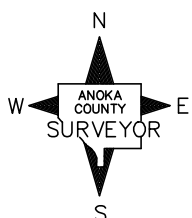
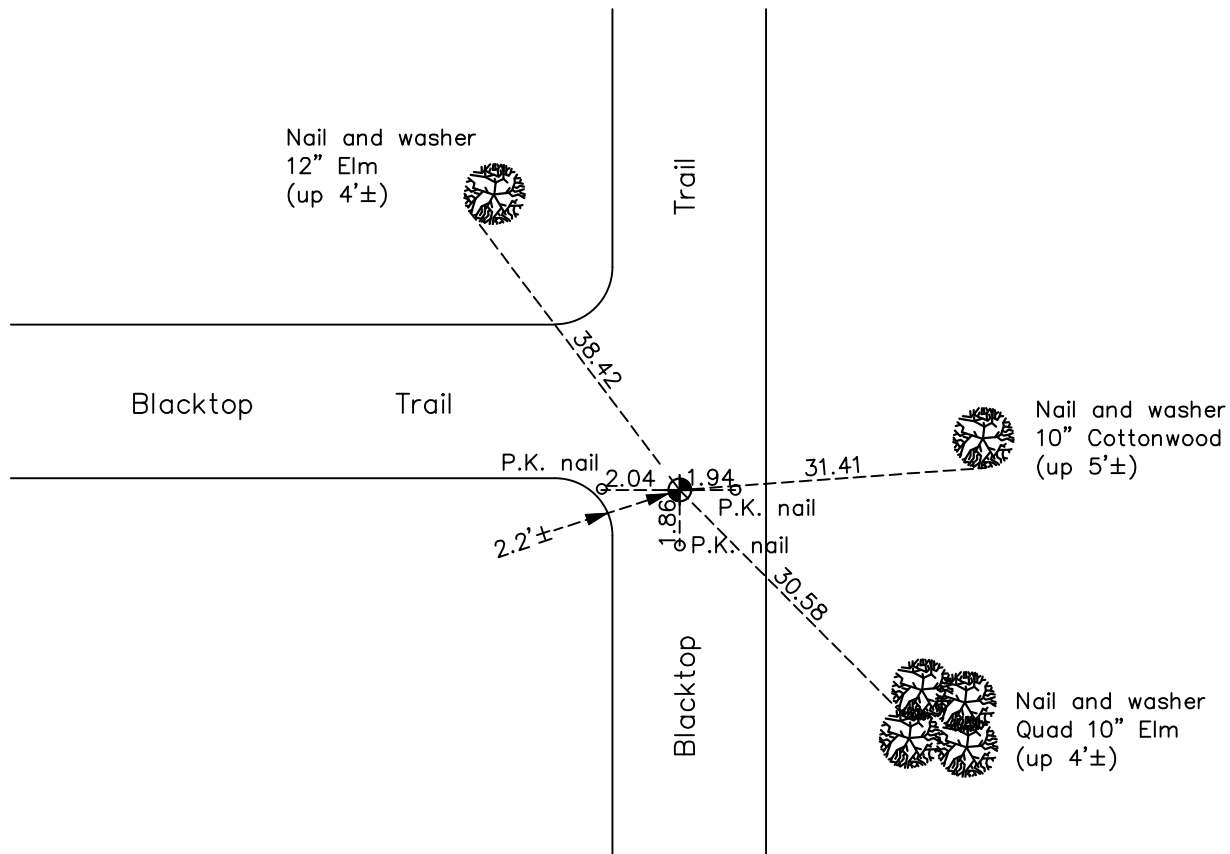
Northeast Corner of Sec. 27 Township 31 Range 22

On the 24th day of April, 1969, the described corner was evidenced by a 2" iron pipe

and to perpetuate the location of said corner, at the exact location thereof, a permanent marker was placed consisting of a cast iron monument

AND on the 7th day of May, 2021, said permanent marker was found broken and was replaced with a new cast iron monument and the ties were updated. Set P.K. nails to N,S,E & W

Updated reference ties are as shown below.



Revision Date
7/30/21

N.A.D. 1983 Coordinates
 (1996 Adjustment)

| County Project Coordinates | |
|----------------------------|--------------------|
| Northing | <u>143042.0323</u> |
| Easting | <u>553006.4090</u> |
| Date | <u>3/05/98</u> |

I hereby certify that this United States public land survey monument record is correct and complete to the best of my knowledge and belief.
David M Zieglmeier Date 8/30/21
 David Zieglmeier Anoka County Surveyor
 Minnesota License Number 46179