

# CERTIFICATE OF LOCATION OF GOVERNMENT CORNER

County of Anoka

State of Minnesota

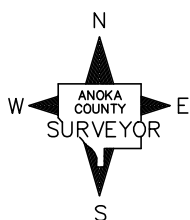
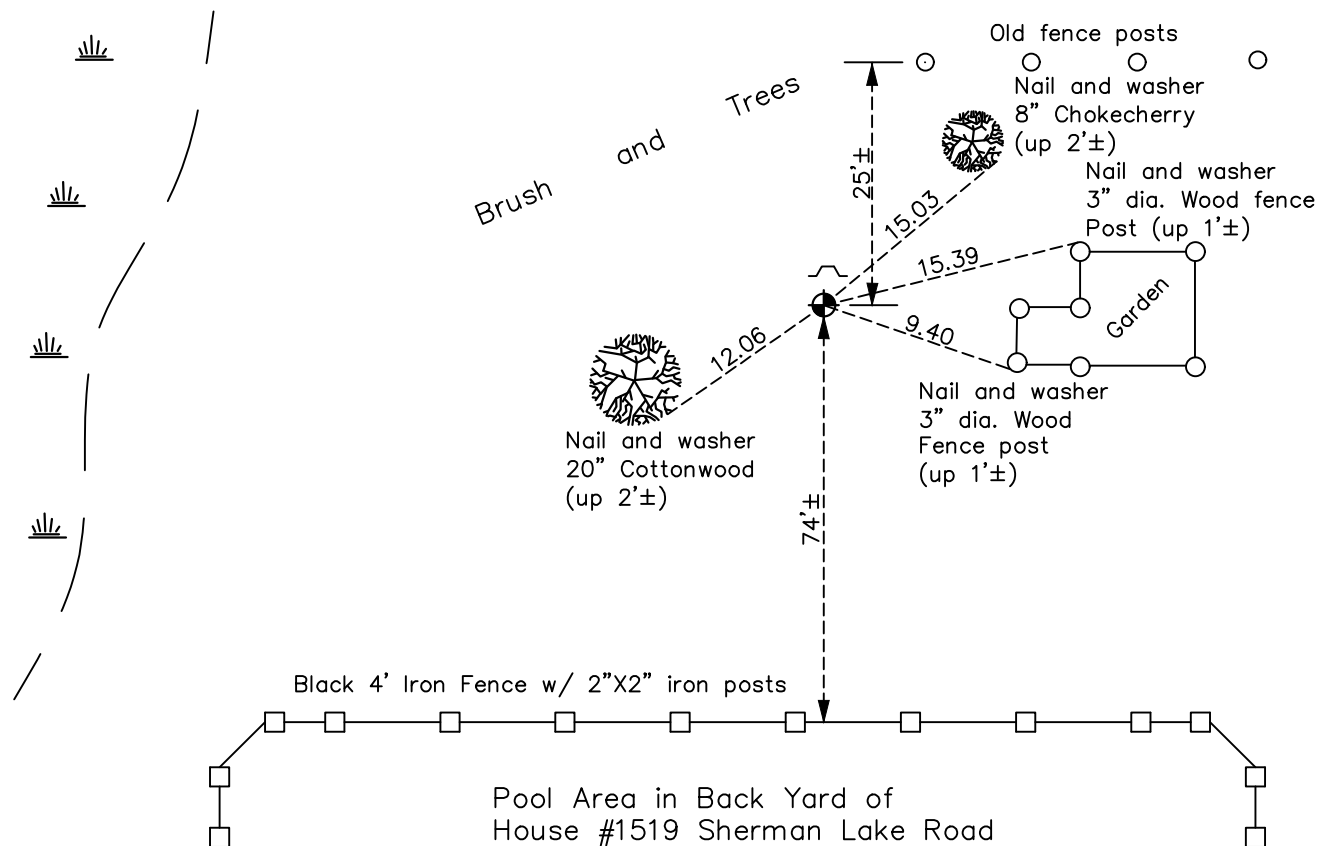
Witness Corner of Sec. 27 Township 31 Range 22  
(on north line of section and east side of Sherman Lake)

On the 14th day of April, 1969, the described corner was evidenced by area resurvey

and to perpetuate the location of said corner, at the exact location thereof, a permanent marker was placed consisting of a cast iron monument with a sign and post on the north side

AND on the 6th day of May, 2021, said permanent marker was found down 0.5'± and the ties were updated

Updated reference ties are as shown below.



Revision Date  
7/30/21

N.A.D. 1983 Coordinates  
 (1996 Adjustment)

County Project Coordinates	
Northing	<u>143032.8897</u>
Easting	<u>551791.7858</u>
Date	<u>3/05/98</u>

I hereby certify that this United States public land survey monument record is correct and complete to the best of my knowledge and belief.  
*David M Zieglmeier* Date 8/30/21  
 David Zieglmeier Anoka County Surveyor  
 Minnesota License Number 46179

# HISTORY OF GOVERNMENT CORNER

Page No. 97

County of Anoka

State of Minnesota

Witness Corner of Sec. 27 Township 31 Range 22  
(on north line of section and east side of Sherman Lake)

## **CORNER HISTORY:**

April 14, 1969 – Set Cast Iron Monument flush with the surface on the east side of Sherman Lake using area resurvey. Established ties to monument.

July 19, 1973 – Found Cast Iron Monument and updated ties.

May 25, 1977 – Found Cast Iron Monument and updated ties.

November 5, 1990 – Found Cast Iron Monument and updated ties.

July 29, 1996 – Found Cast Iron Monument with a sign and post on the north side and updated ties.

March 5, 1998 – Found Cast Iron Monument and established NAD 1983 (1996 Adjustment) Anoka County Project Coordinates by Static GPS methods. Updated ties.

September, 2010– Found Cast Iron Monument down 0.5'± and updated ties.

January 24, 2017 – Found Cast Iron Monument down 0.5'± with a sign and post on the north side and updated ties.

May 6, 2021 – Found Cast Iron Monument down 0.5'± with a sign and post on the north side Verified location of corner by VRS GPS methods and updated ties.