

CERTIFICATE OF LOCATION OF GOVERNMENT CORNER

County of Anoka

State of Minnesota

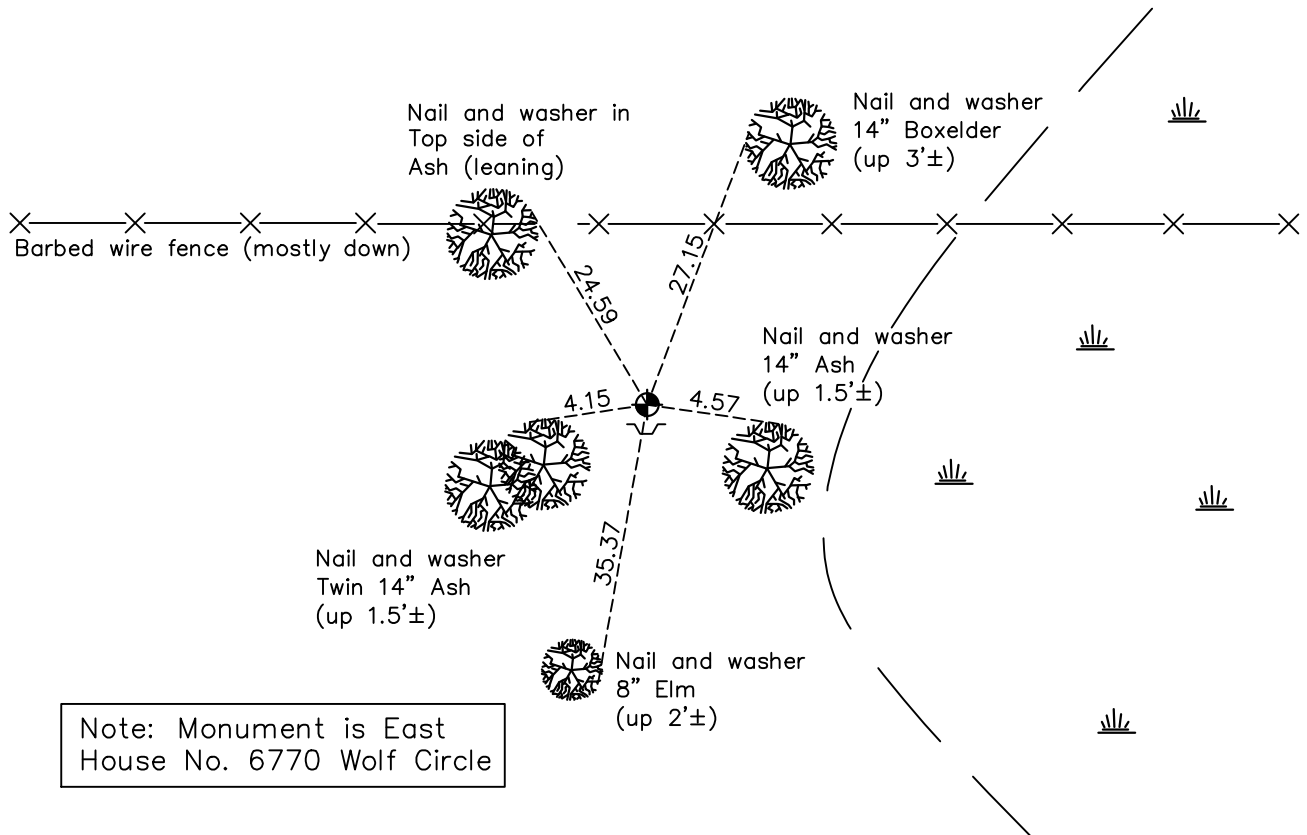
Witness Corner of Sec. 27 Township 31 Range 22
(on north line of section and west side of Sherman Lake)

On the 28th day of May, 1969, the described corner was evidenced by area resurvey

and to perpetuate the location of said corner, at the exact location thereof, a permanent marker was placed consisting of a cast iron monument

AND on the 22nd day of April, 2021, said permanent marker was found up 0.2'± and the ties were updated. A sign and post was found on the south side of monument.

Updated reference ties are as shown below.



Note: Monument is East House No. 6770 Wolf Circle

N
W ANOKA COUNTY SURVEYOR E
S

Revision Date
7/30/21

N.A.D. 1983 Coordinates
(1996 Adjustment)

County Project Coordinates	
Northing	<u>143017.7848</u>
Easting	<u>549785.4902</u>
Date	<u>3/05/98</u>

I hereby certify that this United States public land survey monument record is correct and complete to the best of my knowledge and belief.

David M Zieglmeier Date 8/30/21

David Zieglmeier Anoka County Surveyor
Minnesota License Number 46179

HISTORY OF GOVERNMENT CORNER

Page No. 98

County of Anoka

State of Minnesota

Witness Corner of Sec. 27 Township 31 Range 22
(on north line of section and west side of Sherman Lake)

CORNER HISTORY:

May 28, 1969 – Set Cast Iron Monument flush with the surface using area resurvey. Established ties to monument.

July 19, 1973 – Found Cast Iron Monument and updated ties.

June 7, 1977 – Found Cast Iron Monument and updated ties.

August 19, 1980 – Found Cast Iron Monument and updated ties.

July 25, 1986 – Found Cast Iron Monument and updated ties.

July 30, 1996 – Found Cast Iron Monument and updated ties.

March 5, 1998 – Found Cast Iron Monument and established NAD 1983 (1996 Adjustment) Anoka County Project Coordinates by Static GPS methods. Updated ties.

September 9, 2010 – Found Cast Iron Monument up $0.2'\pm$ and updated ties. A sign and post was set on the south side of the monument.

December 9, 2016 – Found Cast Iron Monument up $0.2'\pm$ and updated ties. A sign and post was found on the south side of the monument.

April 22, 2021 – Found Cast Iron Monument up $0.2'\pm$ and updated ties. A sign and post was found on the south side of the monument.