

# CERTIFICATE OF LOCATION OF GOVERNMENT CORNER

County of Anoka

State of Minnesota

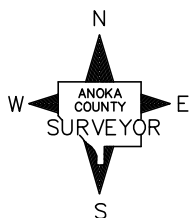
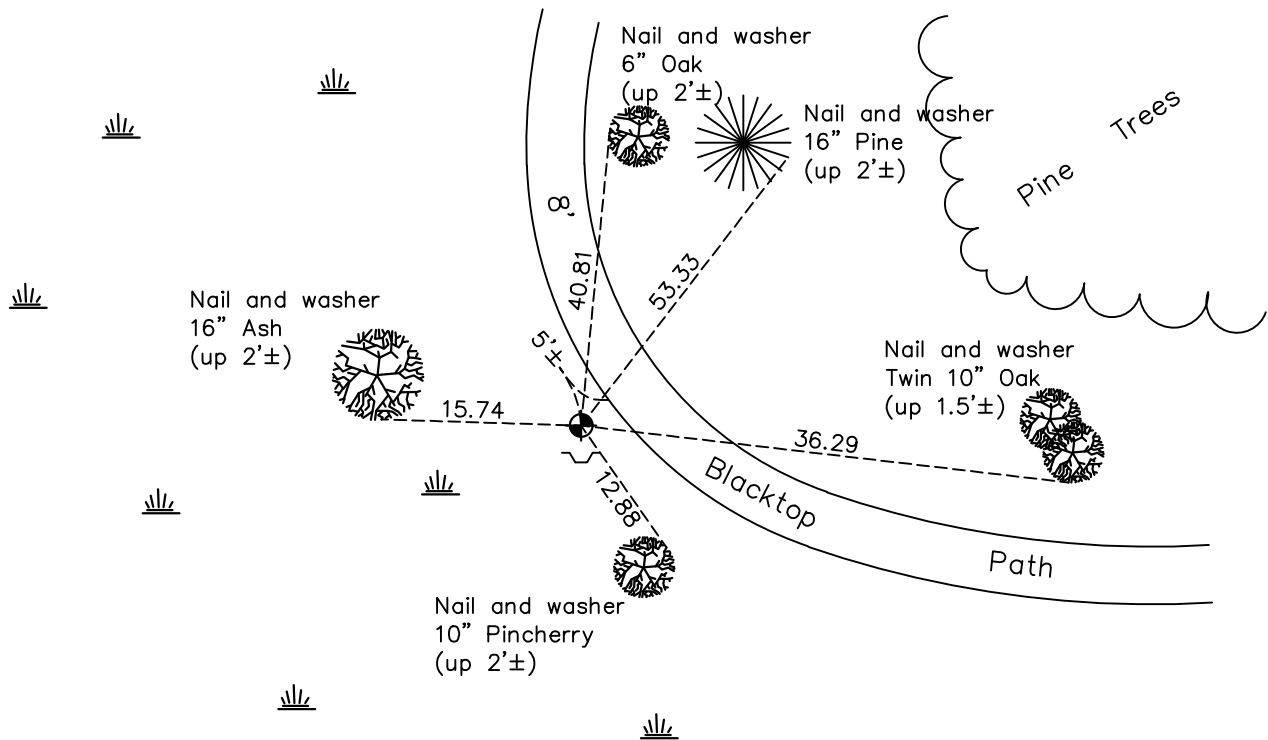
Witness Corner of Sec. 27 Township 31 Range 22  
(on north line of section and east side of Ward Lake)

On the 26th day of May, 1969, the described corner was evidenced by area resurvey

and to perpetuate the location of said corner, at the exact location thereof, a permanent marker was placed consisting of a cast iron monument with a sign and post on the south side

AND on the 22nd day of April, 2021, said permanent marker was found down 1'± and the ties were updated

Updated reference ties are as shown below.



Revision Date  
7/30/21

N.A.D. 1983 Coordinates  
(1996 Adjustment)

County Project Coordinates	
Northing	<u>143012.6577</u>
Easting	<u>549086.4157</u>
Date	<u>7/29/96</u>

I hereby certify that this United States public land survey monument record is correct and complete to the best of my knowledge and belief.  
*David M Zieglmeier* Date 8/30/21  
 David Zieglmeier Anoka County Surveyor  
 Minnesota License Number 46179

# HISTORY OF GOVERNMENT CORNER

County of Anoka

State of Minnesota

Witness Corner of Sec. 27 Township 31 Range 22  
(on north line of section and east side of Ward Lake)

## **CORNER HISTORY:**

May 26, 1969 – Set Cast Iron Monument flush with the surface on the east side of Ward Lake using area resurvey. Established ties to monument.

July 19, 1973 – Found Cast Iron Monument and updated ties.

June 7, 1977 – Found Cast Iron Monument and updated ties.

August 19, 1980 – Found Cast Iron Monument and updated ties.

June 10, 1983 – Found Cast Iron Monument and updated ties.

October 23, 1991– Found Cast Iron Monument and updated ties.

July 29, 1996 – Found Cast Iron Monument and established NAD 1983 (1996 Adjustment) Anoka County Project Coordinates by Static GPS methods. Updated ties.

August 19, 2010 – Found Cast Iron Monument down 1'± with a sign and post on the south side. Updated ties.

December 8, 2016 – Found Cast Iron Monument down 1'± with a sign and post on the south side. Updated ties.

April 22, 2021 – Found Cast Iron Monument down 1'± with a sign and post on the south side. Updated ties.