

CERTIFICATE OF LOCATION OF GOVERNMENT CORNER

County of Anoka

State of Minnesota

Witness Corner of Sec. 28 Township 31 Range 22

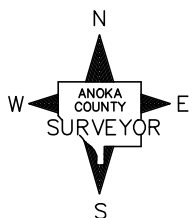
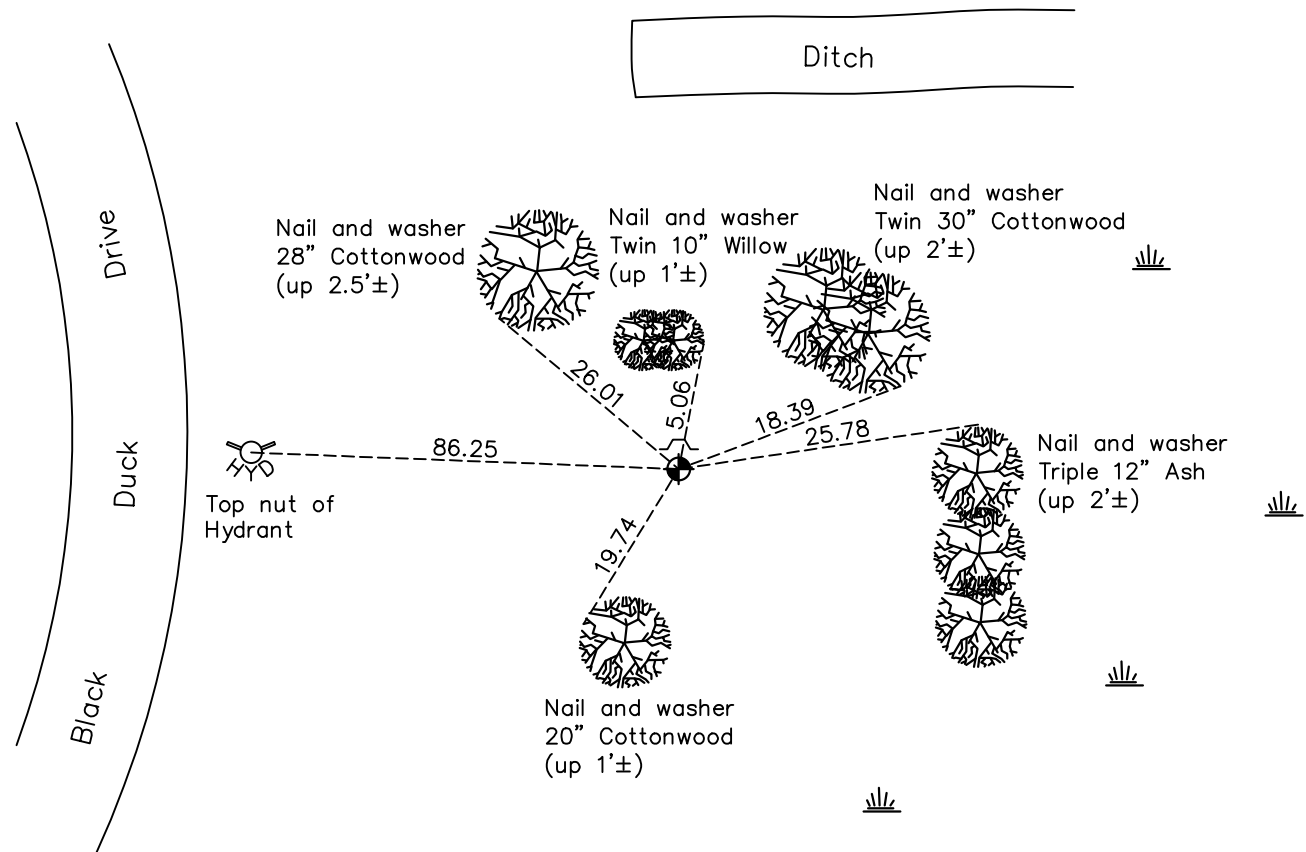
(on north line of section and west side of Ward Lake)

On the 17th day of December, 1980, the described corner was evidenced by area resurvey

and to perpetuate the location of said corner, at the exact location thereof, a permanent marker was placed consisting of a cast iron monument with a sign and post on the north side

AND on the 6th day of May, 2021, said permanent marker was found flush with the surface and the ties were updated

Updated reference ties are as shown below.



Revision Date
7/30/21

N.A.D. 1983 Coordinates
 (1996 Adjustment)

County Project Coordinates	
Northing	<u>143002.8921</u>
Easting	<u>546427.7419</u>
Date	<u>3/17/98</u>

I hereby certify that this United States public land survey monument record is correct and complete to the best of my knowledge and belief.
David M Zieglmeier Date 8/30/21
 David Zieglmeier Anoka County Surveyor
 Minnesota License Number 46179

HISTORY OF GOVERNMENT CORNER

Page No. 100

County of Anoka

State of Minnesota

Witness Corner of Sec. 28 Township 31 Range 22
(on north line of section and west side of Ward Lake)

CORNER HISTORY:

March 25, 1968 – Set Cast Iron Monument flush with the surface using area resurvey and placed steel post 0.5'± north and up 3'±. Established ties to monument.

July 20, 1973 – Ties and corner not found. Area under construction.

June 1, 1977 – Ties and corner not found.

January 20, 1978 – Set Cast Iron Monument using area resurvey in 1968 by MD Anderson and placed steel post on north side. Established ties to monument.

December 17, 1980 – Set Cast Iron Monument using area resurvey and set a sign and post on the north side. Updated ties.

July 25, 1986 – Found Cast Iron Monument and updated ties.

August 30, 1991 – Found Cast Iron Monument and updated ties.

March 17, 1998 – Found Cast Iron Monument and established NAD 1983 (1996 Adjustment) Anoka County Project Coordinates by Static GPS methods. Updated ties.

August 19, 2010 – Found Cast Iron Monument flush with the surface with a sign and post on the north side and updated ties.

November 17, 2016 – Found Cast Iron Monument flush with the surface with a sign and post on the north side and updated ties.

May 6, 2021 – Found Cast Iron Monument flush with the surface with a sign and post on the north side. Verified location of corner by VRS GPS methods and updated ties.