

# CERTIFICATE OF LOCATION OF GOVERNMENT CORNER

County of Anoka

State of Minnesota

## Witness Corner of Sec. 28 Township 31 Range 22

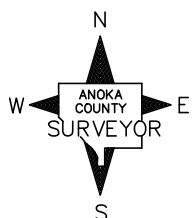
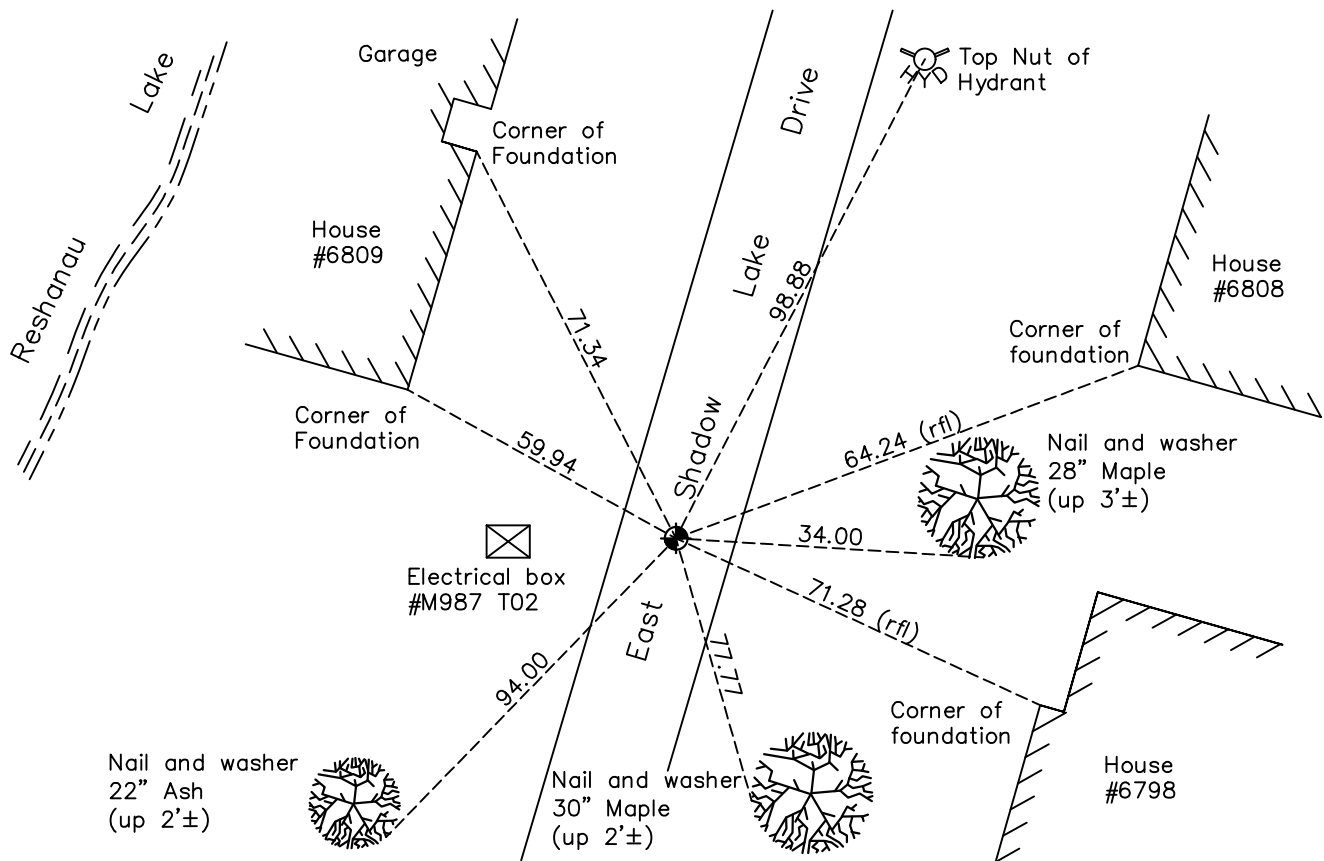
(on north line of NE 1/4)

On the 29th day of May, 1990, the described corner was evidenced by area resurvey and iron pipe set by Suburban Engineering. Original corner falls in lake.

and to perpetuate the location of said corner, at the exact location thereof, a permanent marker was placed consisting of a cast iron monument

AND on the 17th day of July, 2023, said permanent marker was reset 8" CIM in concrete after road construction. Verified position by ACS RTK method and updated ties after setting.

Updated reference ties are as shown below.



N.A.D. 1983 Coordinates  
(1996 Adjustment)

County Project Coordinates	
Northing	143002.9687
Easting	545446.3152
Date	11/13/00

I hereby certify that this United States public land survey monument record is correct and complete to the best of my knowledge and belief.

*David Zieglmeier* Date 12/11/23

David Zieglmeier Anoka County Surveyor  
Minnesota License Number 46179

Revision Date  
10/02/2023

# HISTORY OF GOVERNMENT CORNER

Page No. 101

County of Anoka

State of Minnesota

Witness Corner of Sec. 28 Township 31 Range 22  
(on north line of NE 1/4)

## **CORNER HISTORY:**

March 26, 1968 – Set Cast Iron Monument flush with the surface using area resurvey, set Steel post 1/2' north and up 3'±. Established ties to monument.

March 16, 1970 – Found Iron Pipe set by Suburban Engineering missing. Set 1/2" Iron Pipe down 0.5'± and updated ties.

June 1, 1977 – Found Iron Pipe and updated ties.

January 23, 1978 – Found 1/2" Iron Pipe down 0.5'± and updated ties.

May 26, 1978 – Replaced 1/2" Iron Pipe with Cast Iron Monument set flush with the surface and updated ties.

August 28, 1979 – Found Cast Iron Monument and set construction ties. Updated ties.

August 13, 1980 – Found Cast Iron Monument and updated ties.

August 29, 1986 – Set 1/2" Iron Pipe in new location between witness corner on Reshanau Lake and witness corner on Ward Lake using area resurvey and established ties to Iron Pipe.

September 25, 1989 – Found Iron Pipe and updated ties.

May 29, 1990 – Set Cast Iron Monument flush with the surface and set P.K. nails 2.00' south and west. Updated ties.

August 13, 1991 – Found Cast Iron Monument and updated ties.

June 19, 1996 – Replaced Cast Iron Monument and updated ties.

March 16, 1998 – Found Cast Iron Monument and updated ties.

August 28, 2000– Cast Iron Monument missing set a P.K. nail and updated ties.

November 13, 2000 – Replaced P.K. nail with a Cast Iron Monument and established NAD 1983 (1996 Adjustment) Anoka County Project Coordinates by Static GPS methods. Updated ties.

July 8, 2010 – Found Cast Iron Monument flush with the surface and updated ties.

11/21/16, 5/25/21 – Found CIM flush. Verified location using VRS GPS methods. Updated ties.

April 13, 2023 – Found CIM flush. Verified location using VRS GPS methods. Updated ties. Removed for road construction.

# HISTORY OF GOVERNMENT CORNER

Page No. 101

County of Anoka

State of Minnesota

Witness Corner of Sec. 28 Township 31 Range 22

## **CORNER HISTORY:**

July 17, 2023 - Reset w/ 8" CIM set in concrete after road construction. Verified position with ACS RTK GPS method and updated ties after setting. Job #23-121