

CERTIFICATE OF LOCATION OF GOVERNMENT CORNER

County of Anoka

State of Minnesota

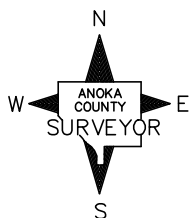
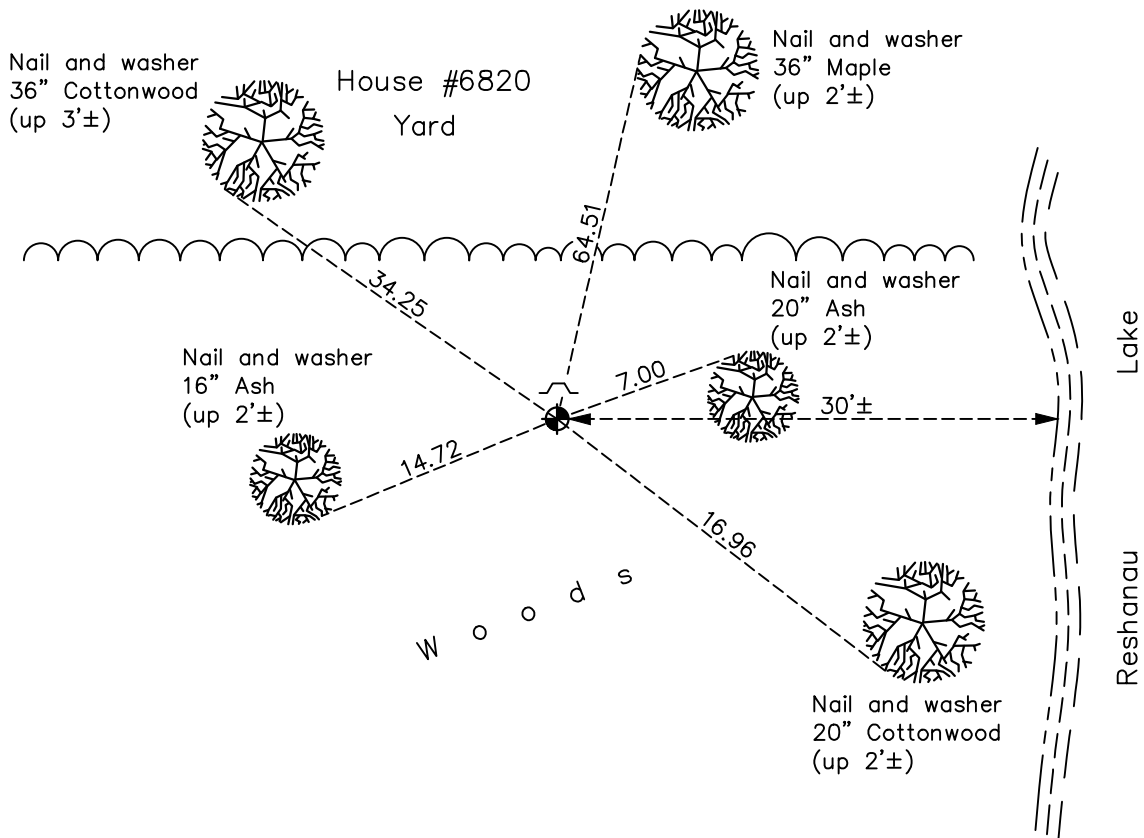
Witness Corner of Sec. 29 Township 31 Range 22
(on north line of NE 1/4)

On the 24th day of December, 1968, the described corner was evidenced by area resurvey

and to perpetuate the location of said corner, at the exact location thereof, a permanent marker was placed consisting of a cast iron monument with a sign and post on the north side

AND on the 3rd day of June, 2021, said permanent marker was found down 0.5'± and the ties were updated

Updated reference ties are as shown below.



Revision Date
7/30/21

N.A.D. 1983 Coordinates
 (1996 Adjustment)

County Project Coordinates	
Northing	<u>143004.6066</u>
Easting	<u>541864.4227</u>
Date	<u>3/17/98</u>

I hereby certify that this United States public land survey monument record is correct and complete to the best of my knowledge and belief.
David M Zieglmeier Date 8/30/21
 David Zieglmeier Anoka County Surveyor
 Minnesota License Number 46179

HISTORY OF GOVERNMENT CORNER

Page No. 103

County of Anoka

State of Minnesota

Witness Corner of Sec. 29 Township 31 Range 22
(on north line of NE 1/4)

CORNER HISTORY:

March 25, 1968 – Set Cast Iron Monument flush with the surface on west side of Reshanau Lake using area resurvey. Established ties to monument.

December 24, 1968 – Reset Cast Iron Monument flush with the surface and 627.90' west of NE corner of Section 29. Updated ties.

June 27, 1973 – Found Cast Iron Monument and updated ties.

May 25, 1977 – Found Cast Iron Monument and updated ties.

August 8, 1980 – Found Cast Iron Monument and updated ties.

May 25, 1977 – Found Cast Iron Monument and updated ties.

June 9, 1983 – Found Cast Iron Monument and updated ties.

July 28, 1986 – Found Cast Iron Monument and updated ties.

September 22, 1989 – Found Cast Iron Monument and set sign and post on north side. Updated ties.

October 25, 1991 – Found Cast Iron Monument and updated ties.

June 26, 1996 – Found Cast Iron Monument and updated ties.

March 17, 1998 – Found Cast Iron Monument and established NAD 1983 (1996 Adjustment) Anoka County Project Coordinates by Static GPS methods. Updated ties.

August 25, 2010 – Found Cast Iron Monument down 0.5'± with a sign and post on the north side and updated ties.

November 17, 2016 – Found Cast Iron Monument down 0.5'± with a sign and post on the north side and updated ties.

June 3, 2021 – Found Cast Iron Monument down 0.5'± with a sign and post on the north side and updated ties.