

# CERTIFICATE OF LOCATION OF GOVERNMENT CORNER

County of Anoka

State of Minnesota

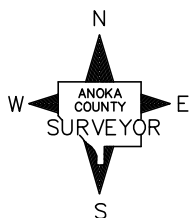
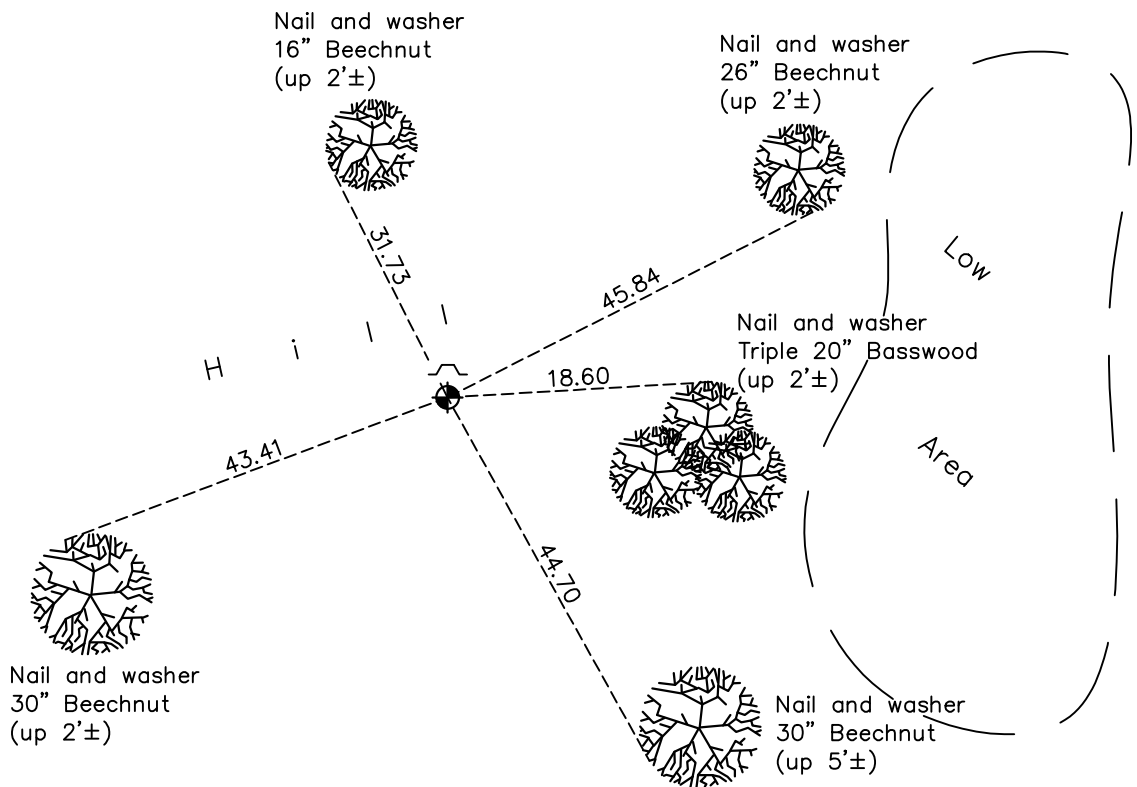
## North 1/4 Corner of Sec. 29 Township 31 Range 22

On the 5th day of December, 1974, the described corner was evidenced by an iron pipe

and to perpetuate the location of said corner, at the exact location thereof, a permanent marker was placed consisting of a cast iron monument with a sign and post on the north side

AND on the 3rd day of June, 2021, said permanent marker was found down 0.2'± and the ties were updated

Updated reference ties are as shown below.



Revision Date  
7/30/21

N.A.D. 1983 Coordinates  
 (1996 Adjustment)

County Project Coordinates	
Northing	<u>143012.1439</u>
Easting	<u>539859.6864</u>
Date	<u>4/22/98</u>

I hereby certify that this United States public land survey monument record is correct and complete to the best of my knowledge and belief.  
*David M Zieglmeier* Date 8/30/21  
 David Zieglmeier Anoka County Surveyor  
 Minnesota License Number 46179

# HISTORY OF GOVERNMENT CORNER

Page No. 103A

County of Anoka

State of Minnesota

## North 1/4 Corner of Sec. 29 Township 31 Range 22

### **CORNER HISTORY:**

December 5, 1974 – Found Iron Pipe during area resurvey. Replaced with a Cast Iron Monument set flush with the surface and established ties to monument. Set sign and post.

August 21, 1980 – Found Cast Iron Monument and updated ties.

October 25, 1991 Found Cast Iron Monument and updated ties.

October 14, 1996 – Found Cast Iron Monument and updated ties.

April 22, 1998– Found Cast Iron Monument and established NAD 1983 (1996 Adjustment) Anoka County Project Coordinates by Static GPS methods. Updated ties.

August 26, 2010 – Found Cast Iron Monument down 0.1'± and updated ties.

January 30, 2017 – Found Cast Iron Monument down 0.2'± with a sign and post on the north side and updated ties.

June 3, 2021 – Found Cast Iron Monument down 0.2'± with a sign and post on the north side and updated ties.