

CERTIFICATE OF LOCATION OF GOVERNMENT CORNER

County of Anoka

State of Minnesota

Witness Corner of Sec. 29 Township 31 Range 22

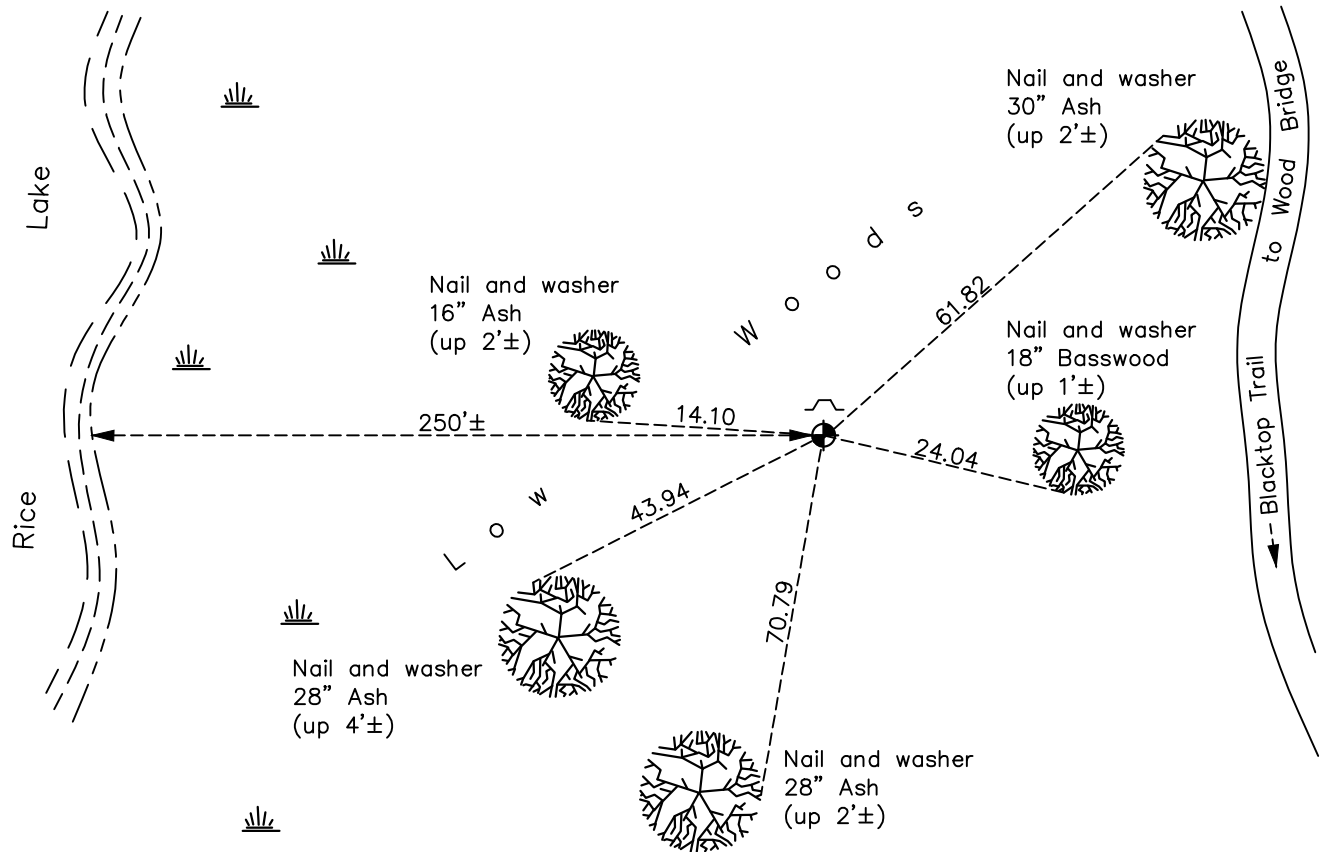
(on north line of section and east side of Rice Lake)

On the 5th day of December, 1974, the described corner was evidenced by area resurvey

and to perpetuate the location of said corner, at the exact location thereof, a permanent marker was placed consisting of a cast iron monument with a sign and post on the north side

AND on the 3rd day of June, 2021, said permanent marker was found up 0.1'± and the ties were updated

Updated reference ties are as shown below.



N
W ANOKA COUNTY SURVEYOR E
S

Revision Date
7/30/21

N.A.D. 1983 Coordinates
(1996 Adjustment)

County Project Coordinates	
Northing	<u>143010.2309</u>
Easting	<u>539557.3894</u>
Date	<u>4/22/98</u>

I hereby certify that this United States public land survey monument record is correct and complete to the best of my knowledge and belief.

David M Zieglmeier Date 8/30/21

David Zieglmeier Anoka County Surveyor
Minnesota License Number 46179

HISTORY OF GOVERNMENT CORNER

Page No. 104

County of Anoka

State of Minnesota

Witness Corner of Sec. 29 Township 31 Range 22
(on north line of section and east side of Rice Lake)

CORNER HISTORY:

December 5, 1974 – Set Cast Iron Monument using area resurvey. Set sign and post north of monument. Established ties to monument.

May 26, 1977 – Found Cast Iron Monument and updated ties.

August 21, 1980 – Found Cast Iron Monument and updated ties.

July 28, 1986 – Found Cast Iron Monument and updated ties.

October 25, 1991 – Found Cast Iron Monument with sign and post on the north side and updated ties.

August 14, 1996 – Found Cast Iron Monument and updated ties.

April 22, 1998 – Found Cast Iron Monument with sign and post on the north side. Established NAD 1983 (1996 Adjustment) Anoka County Project Coordinates by Static GPS methods. Updated ties.

August 26, 2010 – Found Cast Iron Monument up 0.1'± and updated ties.

January 30, 2017 – Found Cast Iron Monument up 0.1'± and updated ties.

June 3, 2021 – Found Cast Iron Monument up 0.1'± and updated ties.