

CERTIFICATE OF LOCATION OF GOVERNMENT CORNER

County of Anoka

State of Minnesota

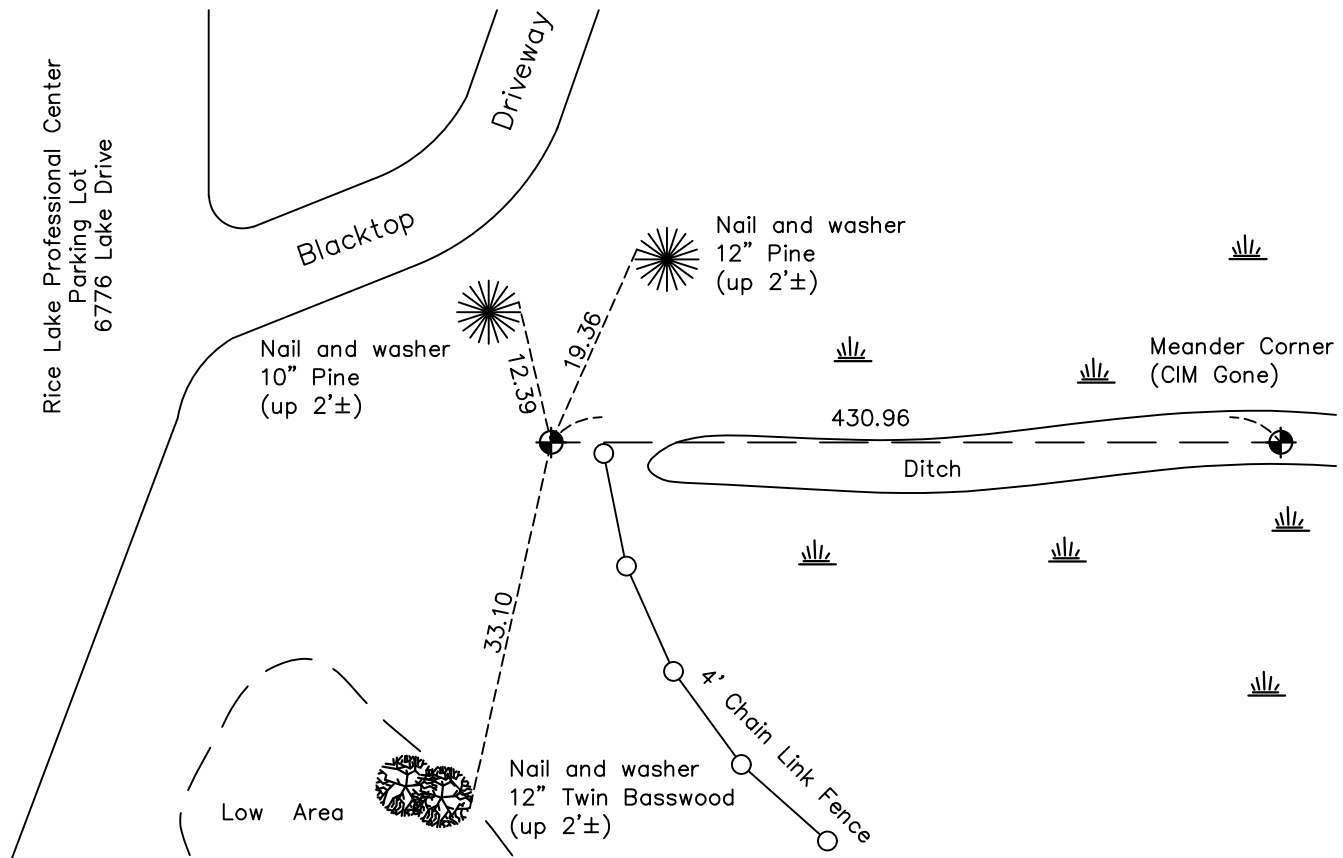
Witness Corner of Sec. 19 Township 31 Range 22
(on south line of SW 1/4)

On the 24th day of June, 2022, the described corner was evidenced by area resurvey

and to perpetuate the location of said corner, at the exact location thereof, a permanent marker was placed consisting of a cast iron monument

AND on the 24th day of June, 2022, said permanent marker was Set new witness corner cast iron monument flush and 430.96' westerly along the south line of section 19. Established ties.

Updated reference ties are as shown below.



Revision Date
7/7/2022

N.A.D. 1983 Coordinates
 (1996 Adjustment)

County Project Coordinates	
Northing	142959.4013
Easting	534026.4290
Date	6/24/2022

I hereby certify that this United States public land survey monument record is correct and complete to the best of my knowledge and belief.

David Zieglermeier Date 6/28/23

David M. Zieglermeier, Anoka County Surveyor
 Minnesota License Number 46179

HISTORY OF GOVERNMENT CORNER

Page No. 105A

County of Anoka

State of Minnesota

Witness Corner of Sec. 19 Township 31 Range 22
(on south line of SW 1/4)

CORNER HISTORY:

June 24, 2022 - Set new witness corner, a cast iron monument flush and 430.96 feet westerly along the south line from old meander corner location (lino lakes page number 105) on the south line of SW 1/4 of section 19 using area resurvey. Established ties to new witness corner.