

CERTIFICATE OF LOCATION OF GOVERNMENT CORNER

County of Anoka

State of Minnesota

Witness Corner of Sec. 29 Township 31 Range 22

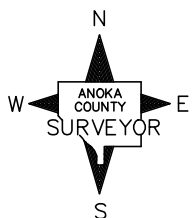
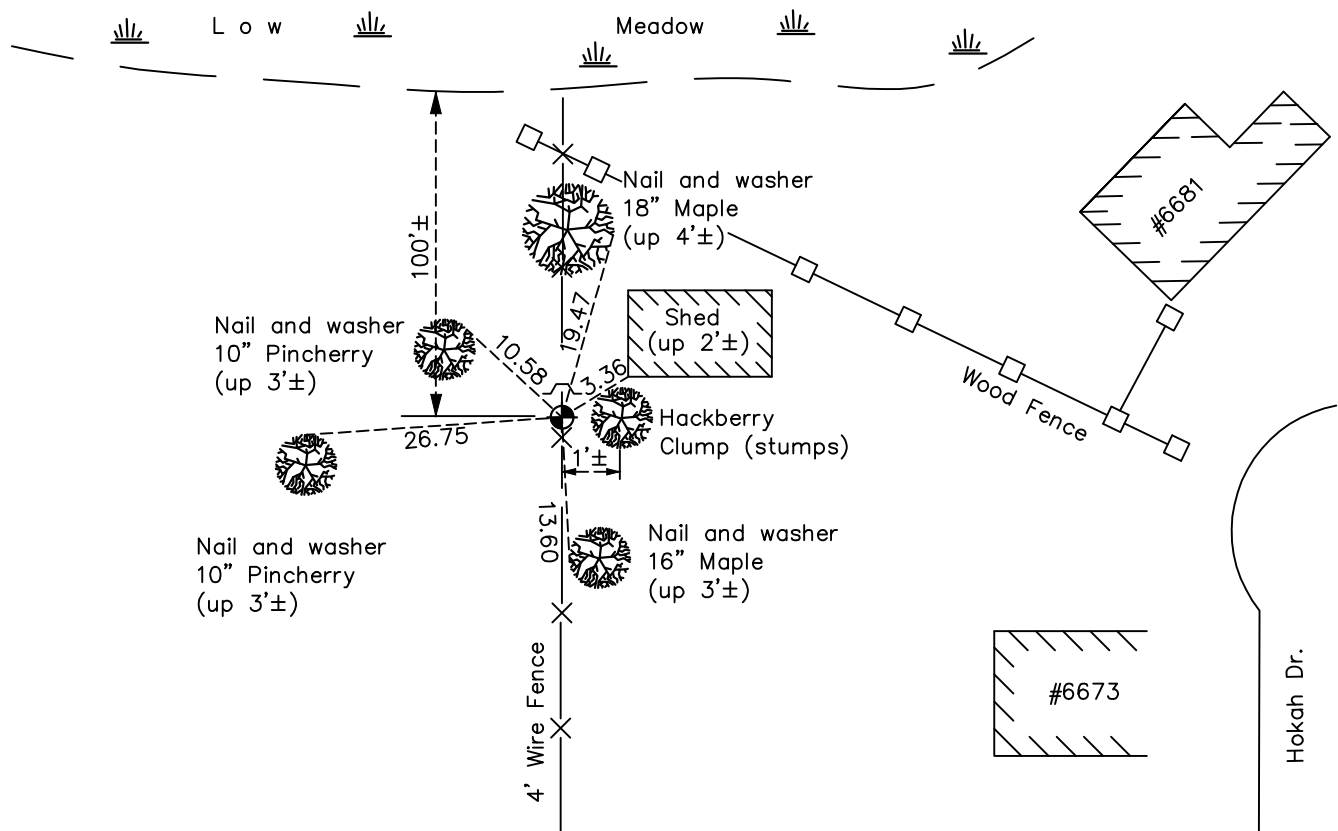
(on west line of section and south side of Rice Lake)

On the 25th day of March, 1968, the described corner was evidenced by area resurvey

and to perpetuate the location of said corner, at the exact location thereof, a permanent marker was placed consisting of a cast iron monument with a sign and post on the north side

AND on the 7th day of June, 2021, said permanent marker was found down 0.5'± under a rock and the ties were updated

Updated reference ties are as shown below.



Revision Date
7/30/21

N.A.D. 1983 Coordinates
 (1996 Adjustment)

County Project Coordinates	
Northing	141191.8143
Easting	537237.1900
Date	1/28/98

I hereby certify that this United States public land survey monument record is correct and complete to the best of my knowledge and belief.
David M Zieglmeier Date 8/30/21
 David Zieglmeier Anoka County Surveyor
 Minnesota License Number 46179

HISTORY OF GOVERNMENT CORNER

Page No. 108

County of Anoka

State of Minnesota

Witness Corner of Sec. 29 Township 31 Range 22
(on west line of section and south side of Rice Lake)

CORNER HISTORY:

March 25, 1968 – Set Bridge Spike on south side of Rice Lake using area resurvey. Established ties to monument.

July 17, 1973 – Replaced Bridge Spike with Cast Iron Monument set flush with the surface. Updated ties.

June 2, 1977 – Found Cast Iron Monument and updated ties.

August 12, 1980 – Found Cast Iron Monument and updated ties.

July 24, 1986 – Found Cast Iron Monument and updated ties.

August 27, 1991 – Found Cast Iron Monument and updated ties.

June 25, 1996 – Found Cast Iron Monument and updated ties.

January 28, 1998 – Found Cast Iron Monument with sign and post on the north side and established NAD 1983 (1996 Adjustment) Anoka County Project Coordinates by Static GPS methods. Updated ties.

August, 2010 – Found Cast Iron Monument down $0.5' \pm$ under a rock with sign and post on the north side. Updated ties.

November 23, 2016 – Found Cast Iron Monument down $0.5' \pm$ under a rock with sign and post on the north side. A new 4' wire fence runs north and south over monument. Updated ties.

June 7, 2021 – Found Cast Iron Monument down $0.5' \pm$ under a rock with sign and post on the north side. A 4' wire fence runs north and south over monument. Updated ties.