

# CERTIFICATE OF LOCATION OF GOVERNMENT CORNER

County of Anoka

State of Minnesota

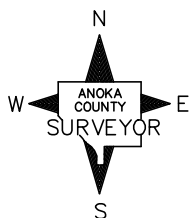
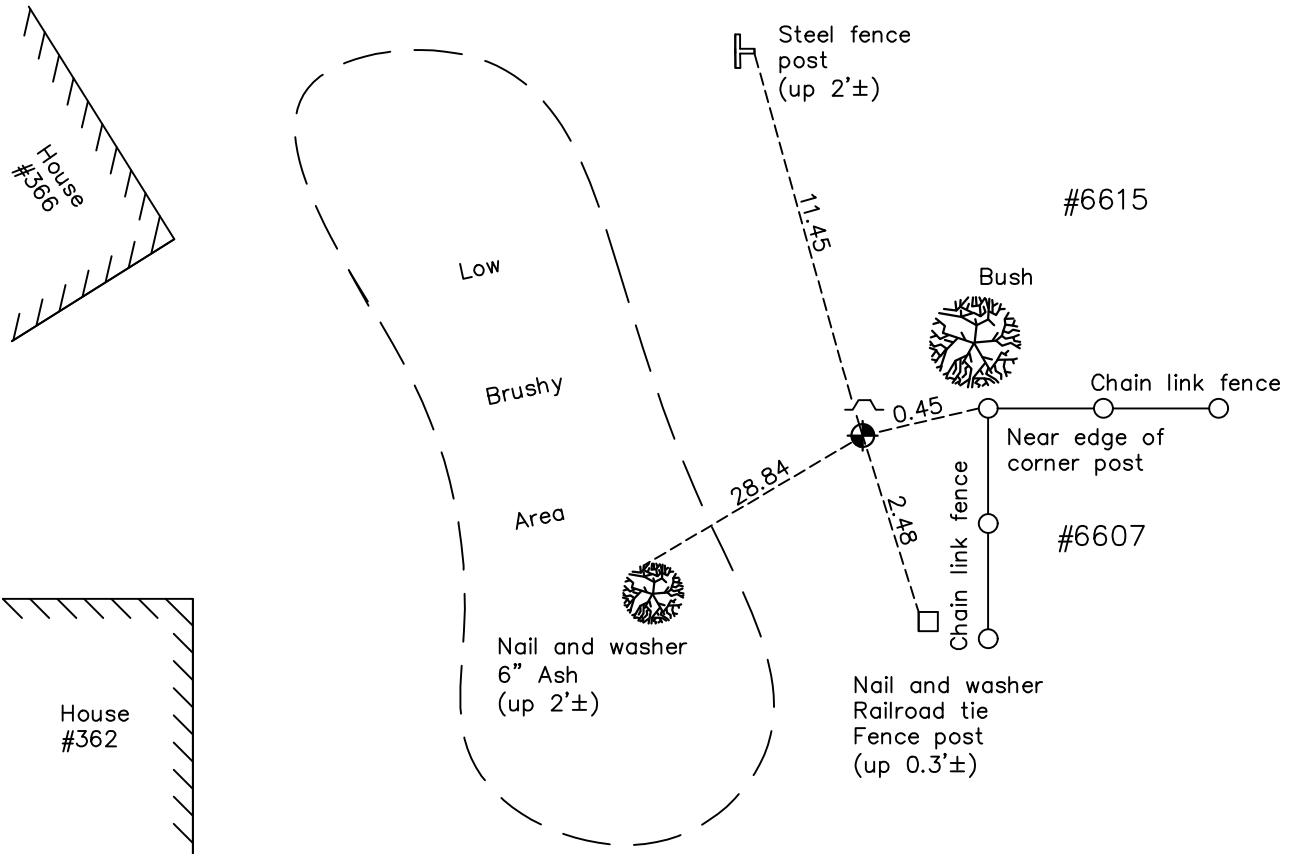
## West 1/4 Corner of Sec. 29 Township 31 Range 22

On the 22nd day of October, 1971, the described corner was evidenced by area resurvey

and to perpetuate the location of said corner, at the exact location thereof, a permanent marker was placed consisting of a cast iron monument with a sign and post on the north side

AND on the 18th day of May, 2021, said permanent marker was found down 0.3'± and the ties were updated

Updated reference ties are as shown below.



Revision Date  
8/2/21

N.A.D. 1983 Coordinates  
 (1996 Adjustment)

| County Project Coordinates |                    |
|----------------------------|--------------------|
| Northing                   | <u>140362.2261</u> |
| Easting                    | <u>537241.7414</u> |
| Date                       | <u>1/28/98</u>     |

I hereby certify that this United States public land survey monument record is correct and complete to the best of my knowledge and belief.  
*David M Zieglmeier* Date 8/30/21  
 David Zieglmeier Anoka County Surveyor  
 Minnesota License Number 46179

# HISTORY OF GOVERNMENT CORNER

Page No. 109

County of Anoka

State of Minnesota

## West 1/4 Corner of Sec. 29 Township 31 Range 22

### **CORNER HISTORY:**

October 22, 1971 – Set Cast Iron Monument flush with the surface over Iron Pipe using area resurvey. Set Steel sign and post 0.5'± north of monument. No ties established.

July 5, 1973 – Found Cast Iron Monument. No ties.

June 2, 1977 – Found Cast Iron Monument. No ties.

August 28, 1979 – Found Cast Iron Monument. Established construction ties to monument.

April 15, 1986 – Found Cast Iron Monument with sign and post on the north side and established ties to monument.

July 24, 1986 – Found Cast Iron Monument and updated ties.

August 7, 1991 – Found Cast Iron Monument and updated ties.

June 25, 1996 – Found Cast Iron Monument and updated ties.

January 28, 1998 – Found Cast Iron Monument and established NAD 1983 (1996 Adjustment) Anoka County Project Coordinates by Static GPS methods. Updated ties.

August 31, 2010 – Found Cast Iron Monument down 0.2'± with a sign and post on the north side and updated ties.

December 19, 2016 – Found Cast Iron Monument down 0.3'± with a sign and post on the north side and updated ties.

May 18, 2021 – Found Cast Iron Monument down 0.3'± with a sign and post on the north side, verified location of corner by VRS GPS methods. and updated ties.